

CERTIFICATE OF LOCATION OF GOVERNMENT CORNER

County of Anoka

State of Minnesota

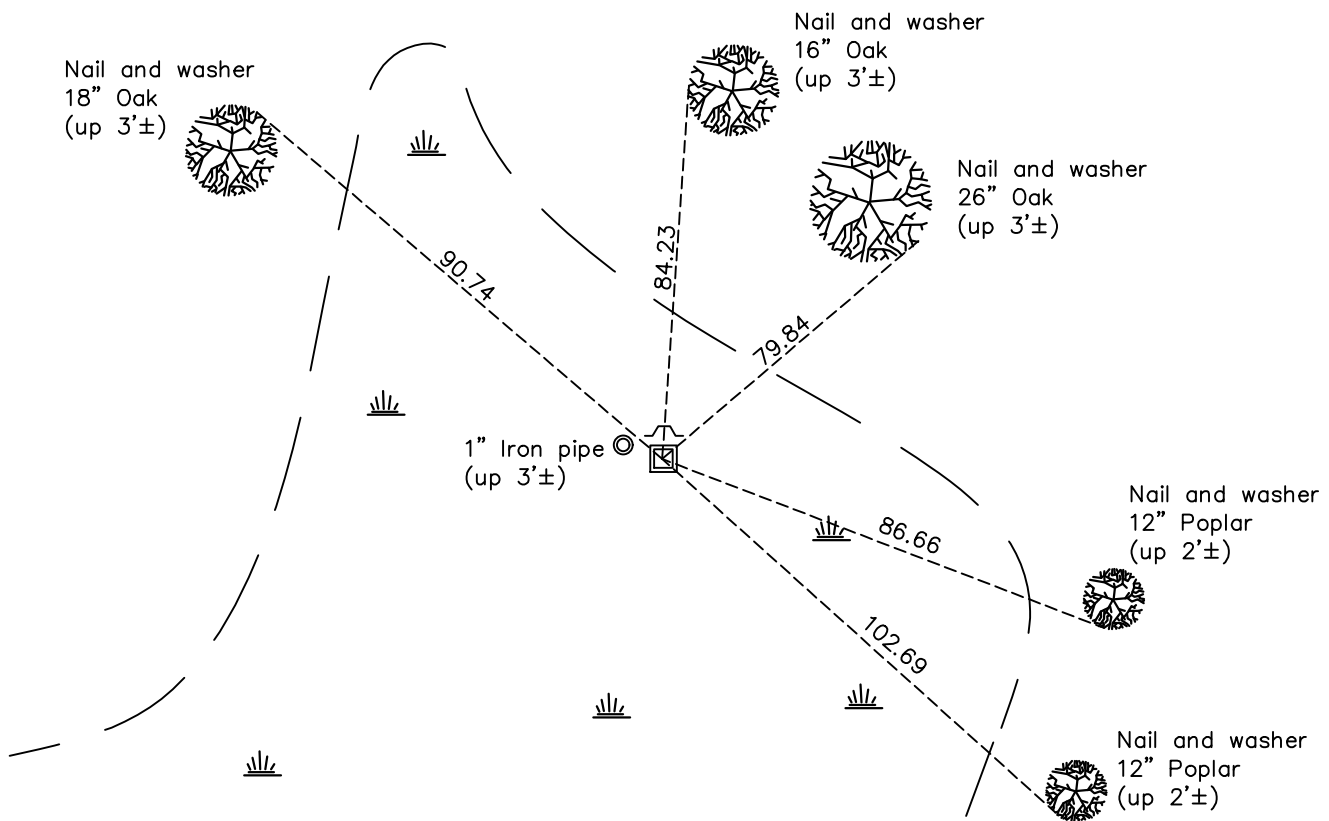
North 1/4 Corner of Sec. 23 Township 33 Range 24

On the 20th day of October, 1960, the described corner was evidenced by a buggy leaf spring

and to perpetuate the location of said corner, at the exact location thereof, a permanent marker was placed consisting of a 2"X6' square steel Telespar monument up 1'± with a "County Surveyor" cap and punchmark and a sign and post 1'± north of monument

AND on the 1st day of December, 2022, said permanent marker was found up 1'± and the ties were updated

Updated reference ties are as shown below.



Revision Date
 12/02/2022

N.A.D. 1983 Coordinates
 (1996 Adjustment)

County Project Coordinates	
Northing	<u>211616.9233</u>
Easting	<u>492316.0105</u>
Date	<u>3/18/02</u>

I hereby certify that this United States public land survey monument record is correct and complete to the best of my knowledge and belief.
David Zieglmeier Date 6/28/23
 David Zieglmeier Anoka County Surveyor
 Minnesota License Number 46179

HISTORY OF GOVERNMENT CORNER

Page No. 72

County of Anoka

State of Minnesota

North 1/4 Corner of Sec. 23 Township 33 Range 24

CORNER HISTORY:

October 20, 1960 - Found 'Buggy Spring Leaf' and replaced permanent marked with Cast Iron Monument set up 0.4'±. Ties were updated.

February 1, 2012 - Found cast iron monument leaning S'ly and updated ties.

July 2, 2013 - Replaced leaning Cast Iron Monument with 2" x 6" square steel Telespar with 'county surveyor' cap and punchmark, set up 1' ±. Updated ties after Telespar set.

February 21, 2018 - Found 2" x 2" square steel Telespar monument up 1'± with a cap and punchmark. Updated ties.

December 1, 2022 - Found 2" x 2" square steel Telespar monument up 1'± with a cap and punchmark. Verified position by VRS GPS method and updated ties.