

# CERTIFICATE OF LOCATION OF GOVERNMENT CORNER

County of Anoka

State of Minnesota

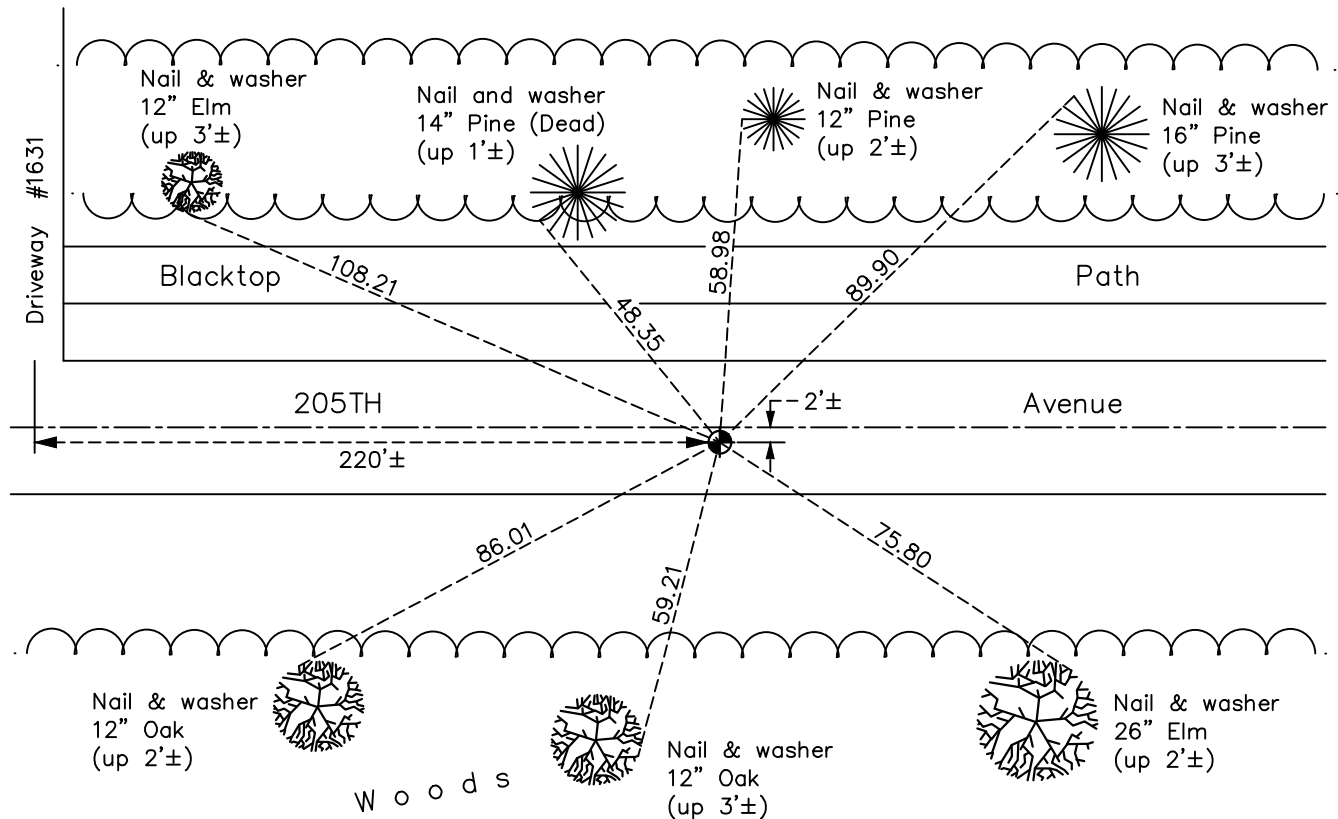
## Northeast Corner of Sec. 22 Township 33 Range 24

On the 29th day of June, 1960, the described corner was evidenced by a granite monument

and to perpetuate the location of said corner, at the exact location thereof, a permanent marker was placed consisting of a cast iron monument

AND on the 23rd day of November, 2020, said permanent marker was found flush and the ties were updated.

Updated reference ties are as shown below.



Revision Date

06/10/2021

N.A.D. 1983 Coordinates  
(1996 Adjustment)

County Project Coordinates	
Northing	<u>211605.9470</u>
Easting	<u>489675.8152</u>
Date	<u>3/26/01</u>

I hereby certify that this United States public land survey monument record is correct and complete to the best of my knowledge and belief.

*David M Zieglmeier* Date 7/30/21

David Zieglmeier Anoka County Surveyor  
Minnesota License Number 46179

# HISTORY OF GOVERNMENT CORNER

Page No. 73

County of Anoka

State of Minnesota

## Northeast Corner of Sec. 22 Township 33 Range 24

### **CORNER HISTORY:**

June 29, 1960 - Found granite monument down 8"± and updated ties.

July 19, 1965 - Found granite monument down 0.5'± with corners towards cardinal directions. Updated ties.

June 25, 1968 - Found granite monument down 8"± with 1" iron pipe North side flush with ground. Updated ties.

August 10, 1971 - Found granite monument and updated ties.

July 7, 1975 - Found granite monument and updated ties.

August 30, 1977 - Found granite monument and updated corner ties prior to road construction. Removed monument.

September 22, 1977 - Reset granite monument deep and set a cast iron monument down 0.5'± on top of granite after road construction. Updated ties.

April 7, 1978 - Found cast iron monument and added additional ties prior to road construction. (unknown reset date)

July 6, 1978 - Found cast iron monument and updated ties.

July 30, 1981 - Found cast iron monument and updated ties.

August 15, 1984 - Found cast iron monument and updated ties.

July 23, 1992 - Found cast iron monument and updated ties.

June 3, 1997 - Found cast iron monument and updated ties.

September 1, 2000 - Found cast iron monument down and raised flush. Updated ties.

March 26, 2001 - Found cast iron monument and updated ties. Established NAD 1983 (1996 adj.) Anoka County project coordinates by static GPS methods.

November 5, 2011 - Found cast iron monument missing. Set temporary P.K. nail using VRS GPS methods.

June 24, 2013 - Set cast iron monument flush using static GPS methods. Verified position by VRS GPS methods. Updated ties.

April 19, 2017 - Found cast iron monument. Verified position by VRS GPS methods. Updated ties.

November 23, 2020 - Found cast iron monument flush. Updated ties.