

CERTIFICATE OF LOCATION OF GOVERNMENT CORNER

County of Anoka

State of Minnesota

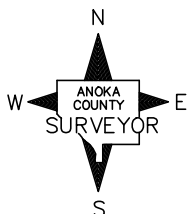
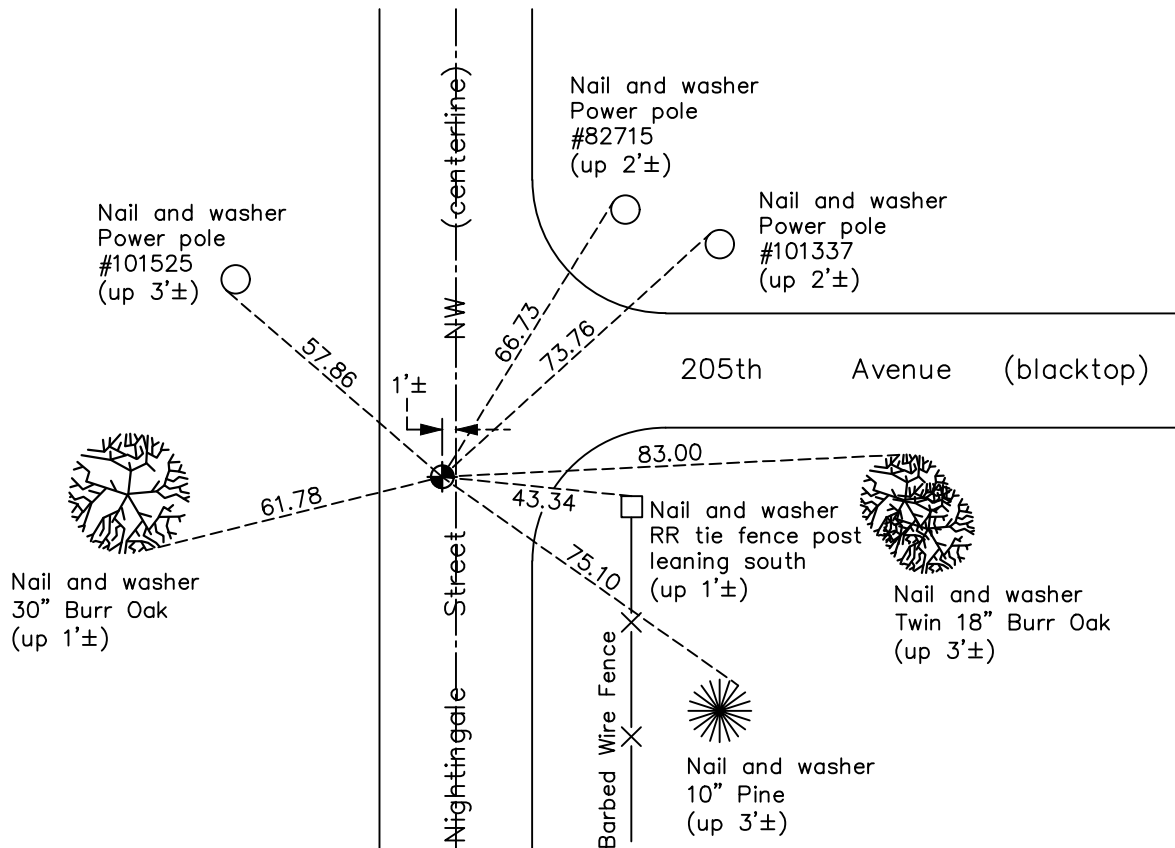
North $\frac{1}{4}$ Corner of Sec. 22 Township 33 Range 24

On the 29th day of June, 1960, the described corner was evidenced by a 2" iron pipe

and to perpetuate the location of said corner, at the exact location thereof, a permanent marker was placed consisting of a cast iron monument

AND on the 22nd day of November, 2020, said permanent marker was found flush and the ties were updated

Updated reference ties are as shown below.



Revision Date

06/10/2021

N.A.D. 1983 Coordinates
(1996 Adjustment)

County Project Coordinates	
Northing	<u>211609.3466</u>
Easting	<u>487053.0690</u>
Date	<u>6/07/01</u>

I hereby certify that this United States public land survey monument record is correct and complete to the best of my knowledge and belief.

David M Zieglmeier Date 7/30/21

David Zieglmeier Anoka County Surveyor
Minnesota License Number 46179

HISTORY OF GOVERNMENT CORNER

Page No. 74

County of Anoka

State of Minnesota

North 1/4 Corner of Sec. 22 Township 33 Range 24

CORNER HISTORY:

April 30, 1959 - Found solid iron in road on tree line running East/West. Updated ties.

June 29, 1960 - Found 2" open iron pipe down 5"± in center line of road and on tree line running East/West. Updated ties.

October 20, 1960 - Found iron pipe and updated ties.

June 19, 1965 - Found iron pipe and updated ties.

June 25, 1968 - Found iron pipe and replaced with a cast iron monument. Updated ties.

July 27, 1971 - Found cast iron monument and updated ties.

July 7, 1975 - Found cast iron monument and updated ties.

July 6, 1978 - Found cast iron monument and updated ties.

July 21, 1981 - Found cast iron monument and updated ties.

August 15, 1984 - Found cast iron monument and updated ties.

July 9, 1992 - Found cast iron monument and updated ties.

June 3, 1997 - Found cast iron monument and updated ties.

June 7, 2001 - Found cast iron monument and updated ties. Established NAD 1983 (1996 adj.) Anoka County project coordinates by static GPS methods.

September 12, 2011 - Found cast iron monument and updated ties.

June 30, 2017 - Found cast iron monument missing. Set new cast iron monument using static GPS methods. Verified position by VRS GPS methods. Updated ties.

February 21, 2018 - Found cast iron monument flush. Verified position by VRS GPS methods. Updated ties.

November 22, 2020 - Found cast iron monument flush. Updated ties.