

# CERTIFICATE OF LOCATION OF GOVERNMENT CORNER

County of Anoka

State of Minnesota

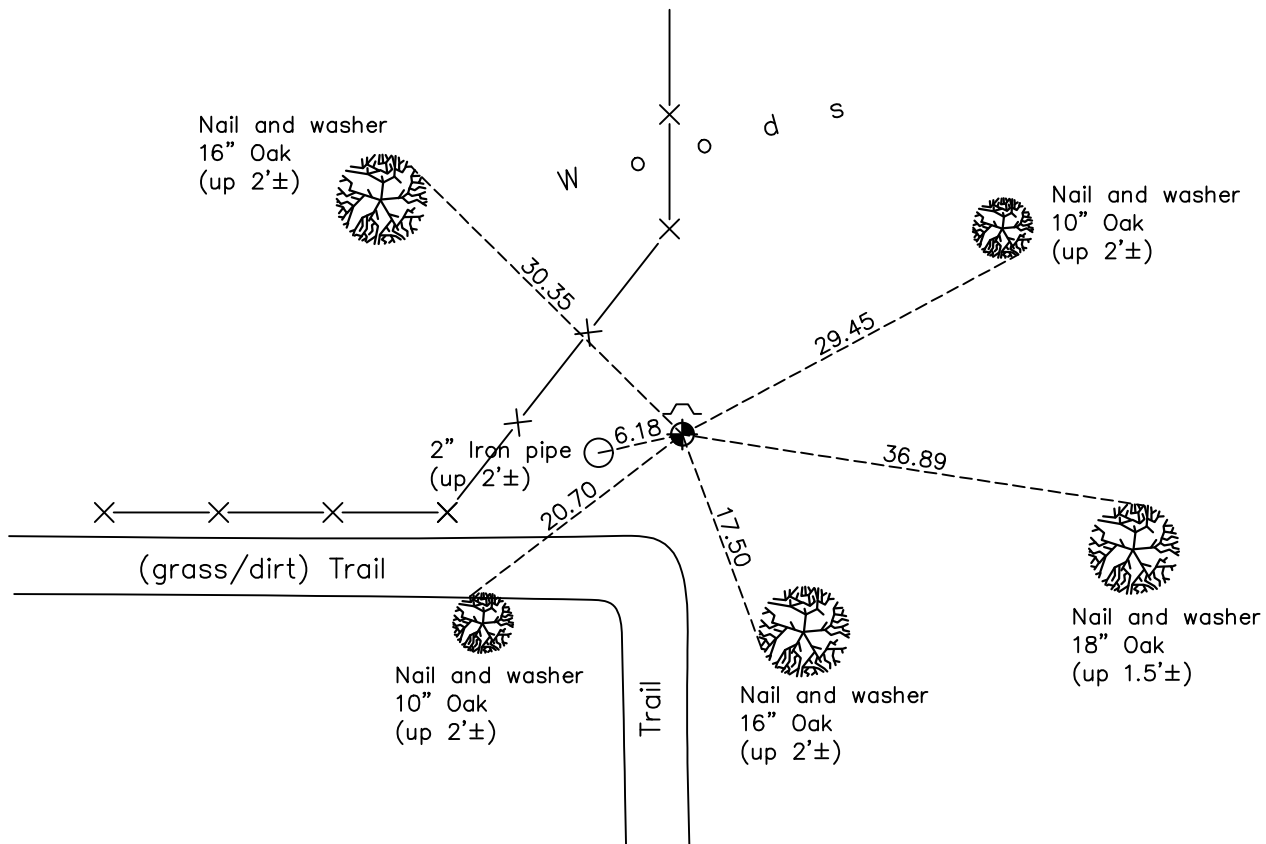
## Southeast Corner of Sec. 16 Township 33 Range 24

On the 27th day of October, 1965, the described corner was evidenced by area resurvey

and to perpetuate the location of said corner, at the exact location thereof, a permanent marker was placed consisting of a cast iron monument with a sign and post on the north side

AND on the 29th day of December, 2020, said permanent marker was found flush and the ties were updated

Updated reference ties are as shown below.



Revision Date

06/10/2021

N.A.D. 1983 Coordinates  
(1996 Adjustment)

County Project Coordinates

Northing 211627.8444

Easting 484453.4759

Date 11/09/01

I hereby certify that this United States public land survey monument record is correct and complete to the best of my knowledge and belief.

*David M Zieglmeier* Date 7/30/21

David Zieglmeier Anoka County Surveyor

Minnesota License Number 46179

# HISTORY OF GOVERNMENT CORNER

Page No. 75

County of Anoka

State of Minnesota

## Southeast Corner of Sec. 16 Township 33 Range 24

### **CORNER HISTORY:**

September 8, 1964 - Set cast iron monument up 0.1'± using area resurvey. Established ties to monument.

July 21, 1965 - Found cast iron monument and updated ties.

October 27, 1965 - Reset cast iron monument in revised position using resurvey adjustment. Updated ties.

July 1, 1968 - Found cast iron monument and updated ties.

August 10, 1971 - Found cast iron monument and updated ties.

July 6, 1978 - Found cast iron monument and updated ties.

July 31, 1981 - Found cast iron monument and updated ties.

August 15, 1984 - Found cast iron monument and updated ties.

July 17, 1992 - Found cast iron monument and updated ties.

June 26, 1997 - Found cast iron monument and updated ties.

November 9, 2001 - Established NAD 1983 (1996 adj.) Anoka County project coordinates by static GPS methods.

February 20, 2002 - Found cast iron monument and updated ties.

October 10, 2011 - Found cast iron monument and updated ties.

May 22, 2017 - Found cast iron monument flush and updated ties.

December 29, 2020 - Found cast iron monument flush. Verified position by VRS GPS methods. And updated ties.