

CERTIFICATE OF LOCATION OF GOVERNMENT CORNER

County of Anoka

State of Minnesota

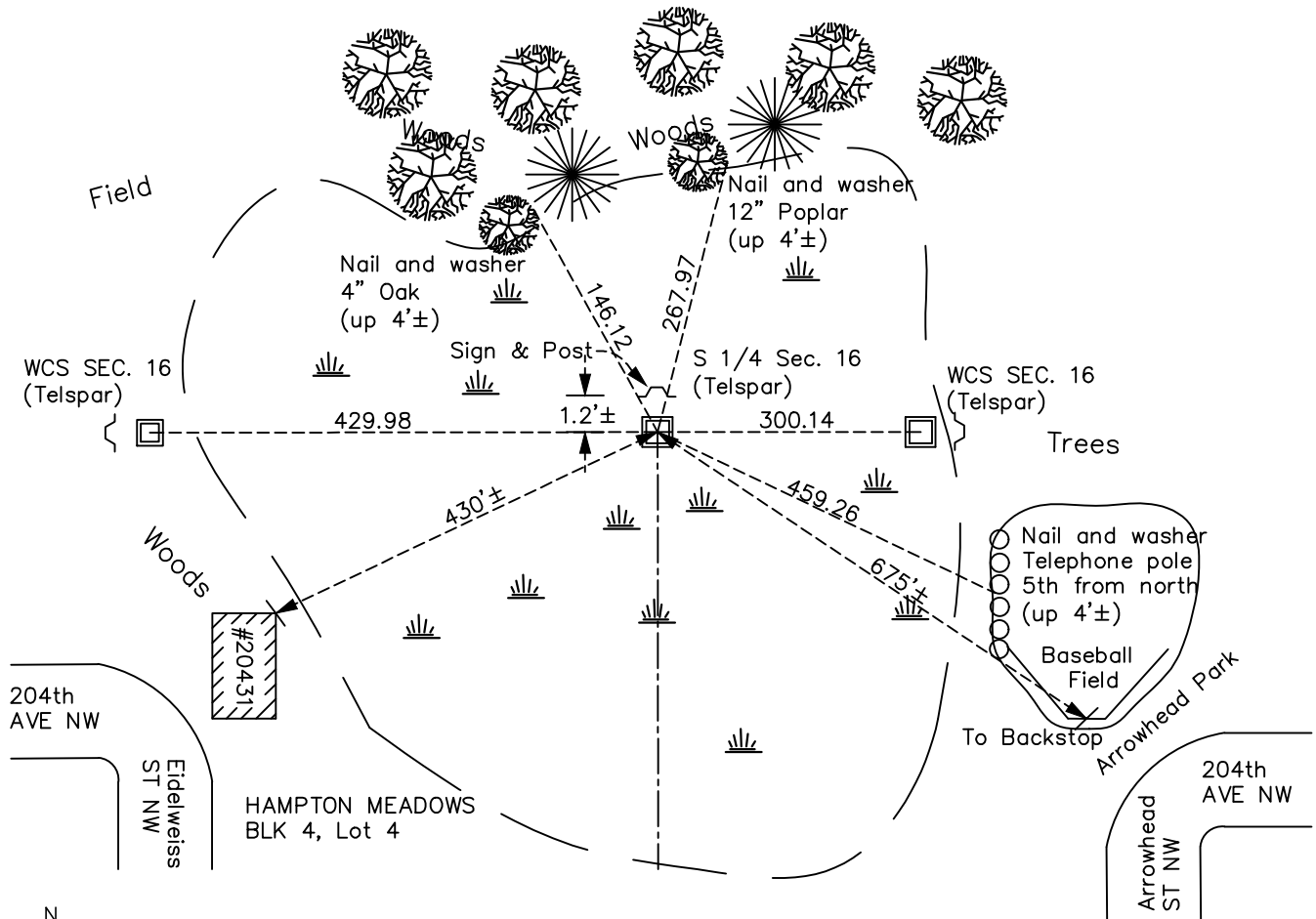
South 1/4 Corner of Sec. 16 Township 33 Range 24

On the 30th day of January, 2024, the described corner was evidenced by a red and white
2" square Telspar monuement

and to perpetuate the location of said corner, at the exact location thereof, a permanent marker was placed consisting of a 2"x 2"x 6' Telspar w/ aluminum cap and punch mark set up 1.5'± in
same location resetting found Telspar rusted off up 0.5'±, which was removed.

AND on the 30th day of January, 2024, said permanent marker was measured with RTK GPS
method to verify location and ties were updated after setting.

Updated reference ties are as shown below.



Revision Date
3/25/2024

N.A.D. 1983 Coordinates
 (1996 Adjustment)

County Project Coordinates	
Northing	<u>211670.8765</u>
Easting	<u>481870.3656</u>
Date	<u>2/20/02</u>

I hereby certify that this United States public land survey monument record is correct and complete to the best of my knowledge and belief.
David Zieglmeier Date 3/28/24
 David Zieglmeier Anoka County Surveyor
 Minnesota License Number 46179

HISTORY OF GOVERNMENT CORNER

Page No. 76

County of Anoka

State of Minnesota

South Corner of Sec. 16 Township 33 Range 24

CORNER HISTORY:

Date:

May 1855 - This corner was established by James M. Marsh, Deputy Surveyor. Marsh marked this position by "set quarter section post" with one bearing tree marked as an accessory.

September 8, 1964 - Set 1" x 9' Red and White Iron Pipe up 3'± from area resurvey.

7/21/65, 8/6/71, 1/18/78, 7/31/81 - Found Red and White Iron Pipe up 3'±. Checked ties.

September 29, 1987 - Set new Red & White Telspar with sign

7/8/92, 6/25/97, 2/20/02 - Found Red & White square steel Telspar

December 21, 2011 - Monument not found

June 18, 2013 - Set Witness corners to East and West, pages 76 A & 76 B

February 9, 2018 - monument located with metal detector below ice 1'±, unable to locate with GPS

December 5, 2022 - Found 2" square Telespar up 6"± with paint worn off, verified position by GPS VRS method. No ties available.

January 30, 2024 - Found 2" square Telspar rusted off, up 0.5'±; removed. Replaced w 2"x 2"x 6' Telspar with 'County Surveyor' cap and punch mark, set up 1.5'±. Set to published coordinates using RTK GPS method and historical ties. Ties established after setting. Added sign/ post to north side. Job #24-100