

CERTIFICATE OF LOCATION OF GOVERNMENT CORNER

County of Anoka

State of Minnesota

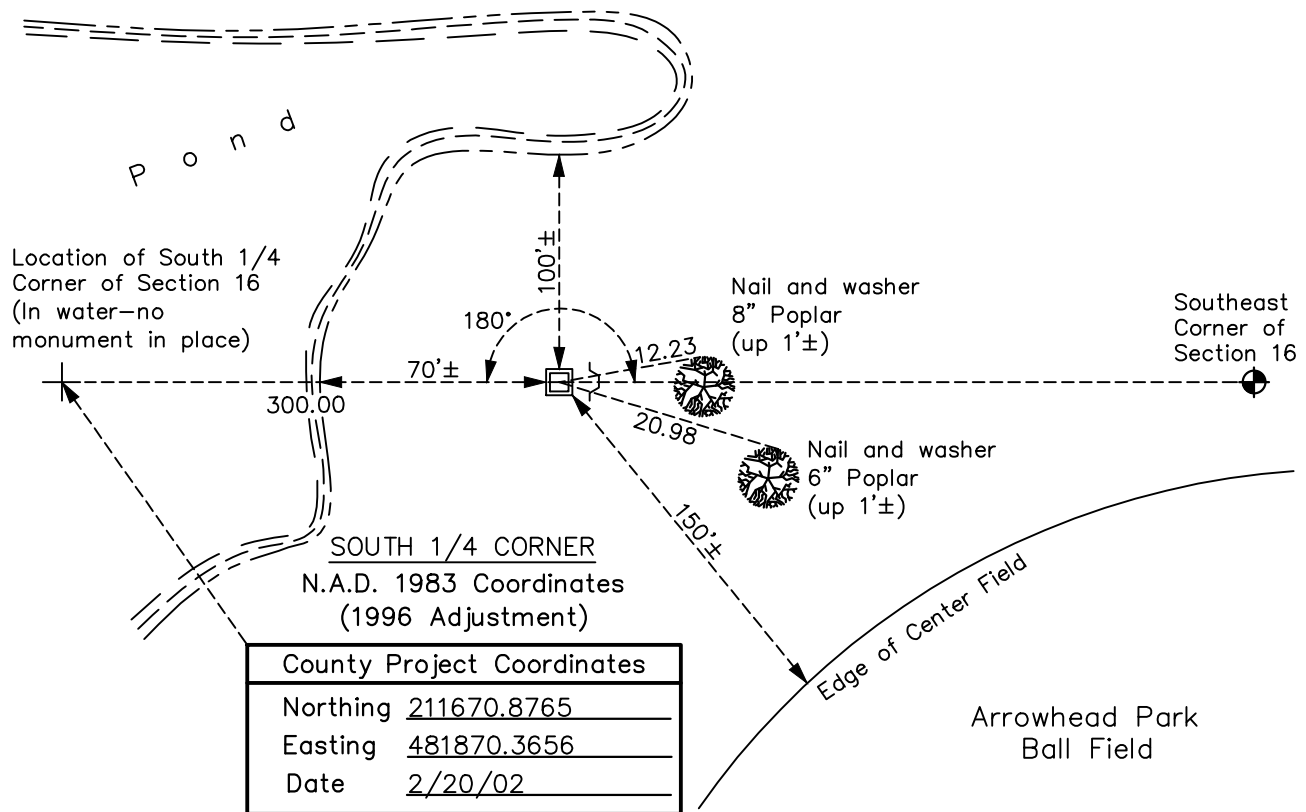
Witness Corner of Sec. 16 Township 33 Range 24
 (on south line of SE1/4)

On the 18th day of June, 2013, the described corner was evidenced by area resurvey

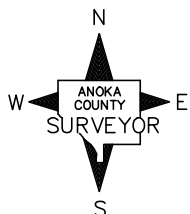
and to perpetuate the location of said corner, at the exact location thereof, a permanent marker was placed consisting of a 2"x5.5' square steel Telspar monument w/punch marked 'County Surveyor' cap. Sign and post 1'± east of monument.

AND on the 14th day of December, 2020, said permanent marker was found up 1'± and the ties were updated

Updated reference ties are as shown below.



County Project Coordinates	
Northing	<u>211670.8765</u>
Easting	<u>481870.3656</u>
Date	<u>2/20/02</u>



Revision Date

06/10/2021

WITNESS CORNER
 N.A.D. 1983 Coordinates
 (1996 Adjustment)

County Project Coordinates	
Northing	<u>211665.8795</u>
Easting	<u>482170.3242</u>
Date	<u>6/18/13</u>

I hereby certify that this United States public land survey monument record is correct and complete to the best of my knowledge and belief.

David M Zieglmeier Date 7/30/21

David Zieglmeier Anoka County Surveyor
 Minnesota License Number 46179

HISTORY OF GOVERNMENT CORNER

Page No. 76A

County of Anoka

State of Minnesota

Witness Corner of Sec. 16 Township 33 Range 24
(on south line of SE1/4)

CORNER HISTORY:

June 18, 2013 - Set 2" x 5.5' square steel Telspar monument up 1'± w/punch marked 'County Surveyor' cap. Established ties to monument. Set sign and post 1'± East of monument.

May 9, 2017 - Found 2" square steel Telspar monument up 1'± w/punch marked cap. Updated ties.

December 14, 2020 - Found 2" square steel Telspar monument up 1'± w/punch marked cap. Verified position by VRS GPS methods. Updated ties.