

CERTIFICATE OF LOCATION OF GOVERNMENT CORNER

County of Anoka

State of Minnesota

Witness Corner of Sec. 16 Township 33 Range 24

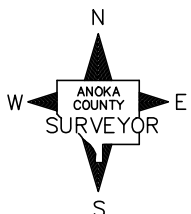
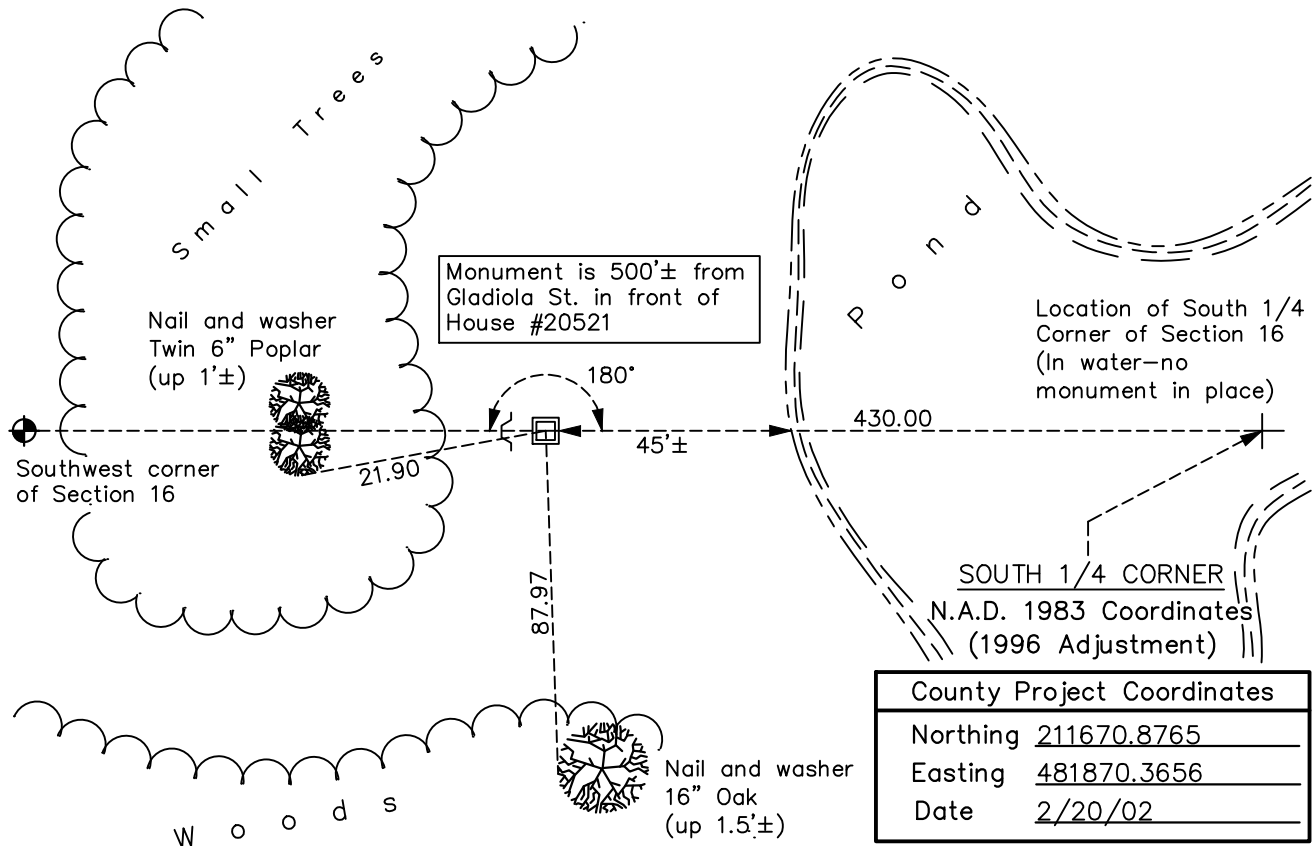
(on south line of SW1/4)

On the 18th day of June, 2013, the described corner was evidenced by area resurvey

and to perpetuate the location of said corner, at the exact location thereof, a permanent marker was placed consisting of a 2"X5' square steel Telspar monument with a 'County Surveyor' cap and punchmark. Sign and post 1'± west of monument.

AND on the 14th day of December, 2020, said permanent marker was found up 1'± and the ties were updated.

Updated reference ties are as shown below.



Revision Date

0610/2021

WITNESS CORNER

N.A.D. 1983 Coordinates
(1996 Adjustment)

County Project Coordinates	
Northing	<u>211677.9422</u>
Easting	<u>481440.4246</u>
Date	<u>6/18/13</u>

I hereby certify that this United States public land survey monument record is correct and complete to the best of my knowledge and belief.

David M Zieglmeier Date 7/30/21

David Zieglmeier Anoka County Surveyor
Minnesota License Number 46179

HISTORY OF GOVERNMENT CORNER

Page No. 76B

County of Anoka

State of Minnesota

Witness Corner of Sec. 16 Township 33 Range 24
(on south line of SW1/4)

CORNER HISTORY:

June 18, 2013 - Set a 2" x 5' square steel Telspar monument up 1'± w/punch marked 'County Surveyor' cap. Set sign and post 1'± West of monument.

May 9, 2017 - Found 2" square steel Telspar monument up 1'± w/cap. Updated ties.

December 14, 2020 - Found 2" square steel Telspar monument up 1'± w/cap. Verified position by VRS GPS methods. Updated ties.