

CERTIFICATE OF LOCATION OF GOVERNMENT CORNER

County of Anoka

State of Minnesota

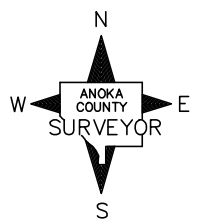
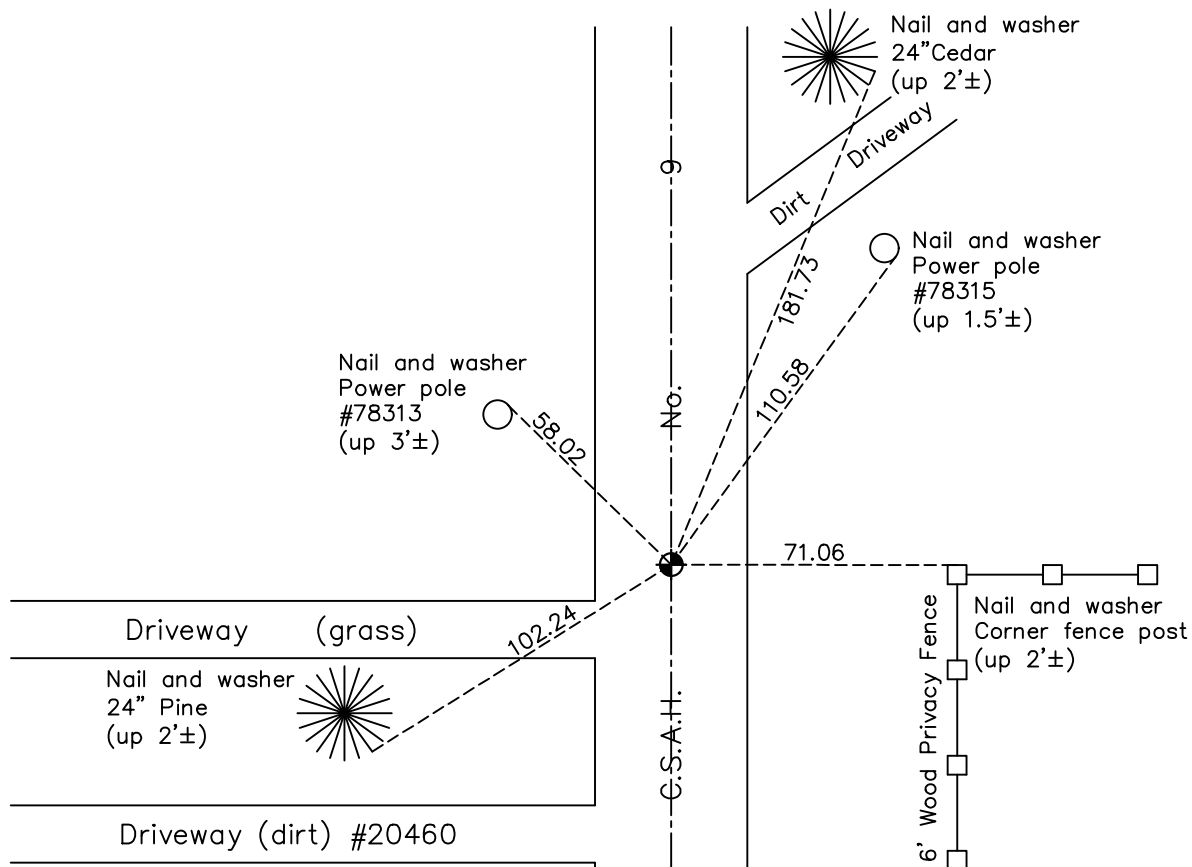
Northeast Corner of Sec. 20 Township 33 Range 24

On the 15th day of September, 1964, the described corner was evidenced by a 1/2" iron pipe

and to perpetuate the location of said corner, at the exact location thereof, a permanent marker was placed consisting of a cast iron monument on centerline

AND on the 25th day of October, 2019, said permanent marker was Reset with a cast iron monument flush and the ties were updated

Updated reference ties are as shown below.



Revision Date
12/5/19

N.A.D. 1983 Coordinates
(1996 Adjustment)

County Project Coordinates	
Northing	<u>211714.1097</u>
Easting	<u>479239.6502</u>
Date	<u>6/08/01</u>

I hereby certify that this United States public land survey monument record is correct and complete to the best of my knowledge and belief.

David M Zieglmeier Date 7/30/21

David Zieglmeier Anoka County Surveyor
Minnesota License Number 46179

HISTORY OF GOVERNMENT CORNER

Page No. 77

County of Anoka

State of Minnesota

Northeast Corner of Sec. 20 Township 33 Range 24

CORNER HISTORY:

September 15, 1964 - Found 1/2" iron pipe flush, set by J. Kurth. Established ties to iron pipe.

August 3, 1965 - Found iron pipe and replaced with a cast iron monument flush. Updated ties.

June 28, 1968 - Found cast iron monument and updated ties.

July 28, 1971 - Found cast iron monument and updated ties.

July 3, 1975 - Found cast iron monument and updated ties.

July 6, 1978 - Found cast iron monument and updated ties.

July 24, 1981 - Found cast iron monument and updated ties.

August 3, 1984 - Found cast iron monument and updated ties.

July 21, 1987 - Found cast iron monument and updated ties.

July 7, 1992 - Found cast iron monument and updated ties.

June 19, 1997 - Found cast iron monument and updated ties.

June 8, 2001 - Established NAD 1983 (1996 adj.) Anoka County project coordinates by static GPS methods.

March 27, 2012 - Found cast iron monument, verified position by VRS GPS methods and updated ties.

May 22, 2017 - Found cast iron monument, verified position by VRS GPS methods and updated ties.

June 13, 2019 - Found cast iron monument, verified position by VRS GPS methods and updated ties prior to road construction. Removed monument.

October 25, 2019 - Set cast iron monument flush after road construction using static GPS methods. Verified position by VRS GPS methods and updated ties.