

# CERTIFICATE OF LOCATION OF GOVERNMENT CORNER

County of Anoka

State of Minnesota

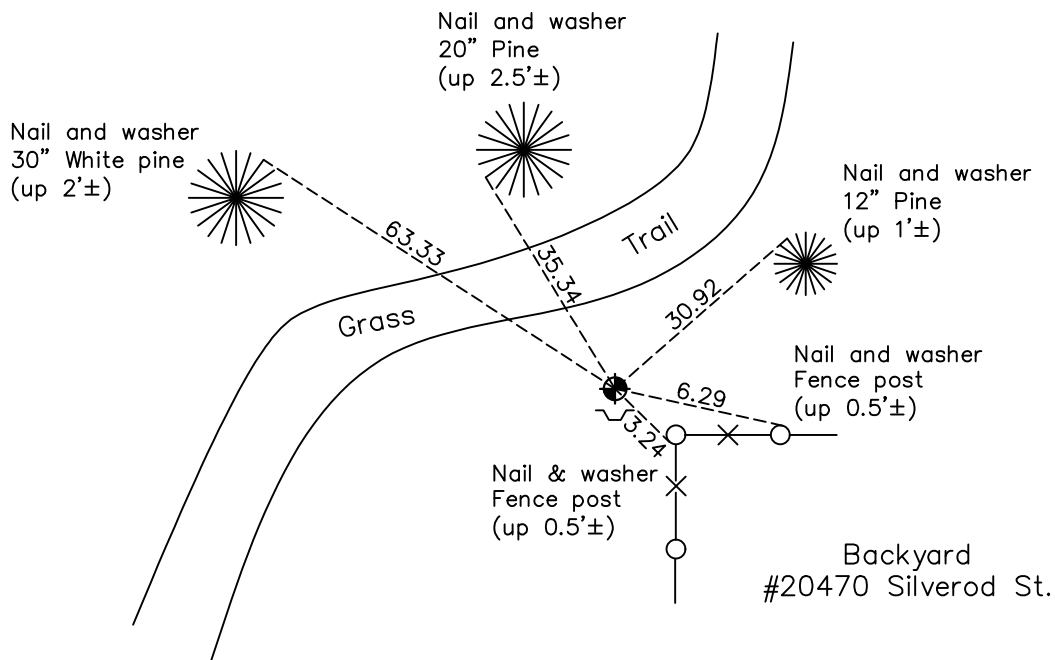
## South 1/4 Corner of Sec. 17 Township 33 Range 24

On the 15th day of September, 1964, the described corner was evidenced by area resurvey

and to perpetuate the location of said corner, at the exact location thereof, a permanent marker was placed consisting of a cast iron monument with a sign and post on the south side

AND on the 14th day of December, 2020, said permanent marker was found down 0.2'± with a sign and post on the south side and the ties were updated.

Updated reference ties are as shown below.



Revision Date

06/10/2021

N.A.D. 1983 Coordinates  
(1996 Adjustment)

County Project Coordinates	
Northing	<u>211780.7272</u>
Easting	<u>476592.4879</u>
Date	<u>6/29/01</u>

I hereby certify that this United States public land survey monument record is correct and complete to the best of my knowledge and belief.

*David M Zieglmeier* Date 7/30/21

David Zieglmeier Anoka County Surveyor  
Minnesota License Number 46179

# HISTORY OF GOVERNMENT CORNER

Page No. 78

County of Anoka

State of Minnesota

South 1/4 Corner of Sec. 17 Township 33 Range 24

## **CORNER HISTORY:**

September 15, 1964 - Set cast iron monument flush using area resurvey. Established ties to monument.

July 21, 1965 - Found cast iron monument and updated ties.

July 2, 1968 - Found cast iron monument and updated ties.

July 7, 1975 - Found cast iron monument and updated ties.

July 6, 1978 - Found cast iron monument and updated ties.

August 3, 1981 - Found cast iron monument and updated ties.

August 16, 1984 - Found cast iron monument and updated ties.

July 30, 1987 - Found cast iron monument and updated ties.

July 15, 1992 - Found cast iron monument and updated ties.

June 26, 1997 - Found cast iron monument and updated ties.

June 29, 2001 - Established NAD 1983 (1996 adj.) Anoka County project coordinates by static GPS methods.

January 30, 2012 - Found cast iron monument down 0.2'± and updated ties. Set sign and post on the South side of monument 4/5/2012.

May 9, 2017 - Found cast iron monument down 0.2'± w/sign and post on the South side. Updated ties.

December 14, 2020 - Found cast iron monument down 0.2'± w/sign and post on the South side. Updated ties.