

CERTIFICATE OF LOCATION OF GOVERNMENT CORNER

County of Anoka

State of Minnesota

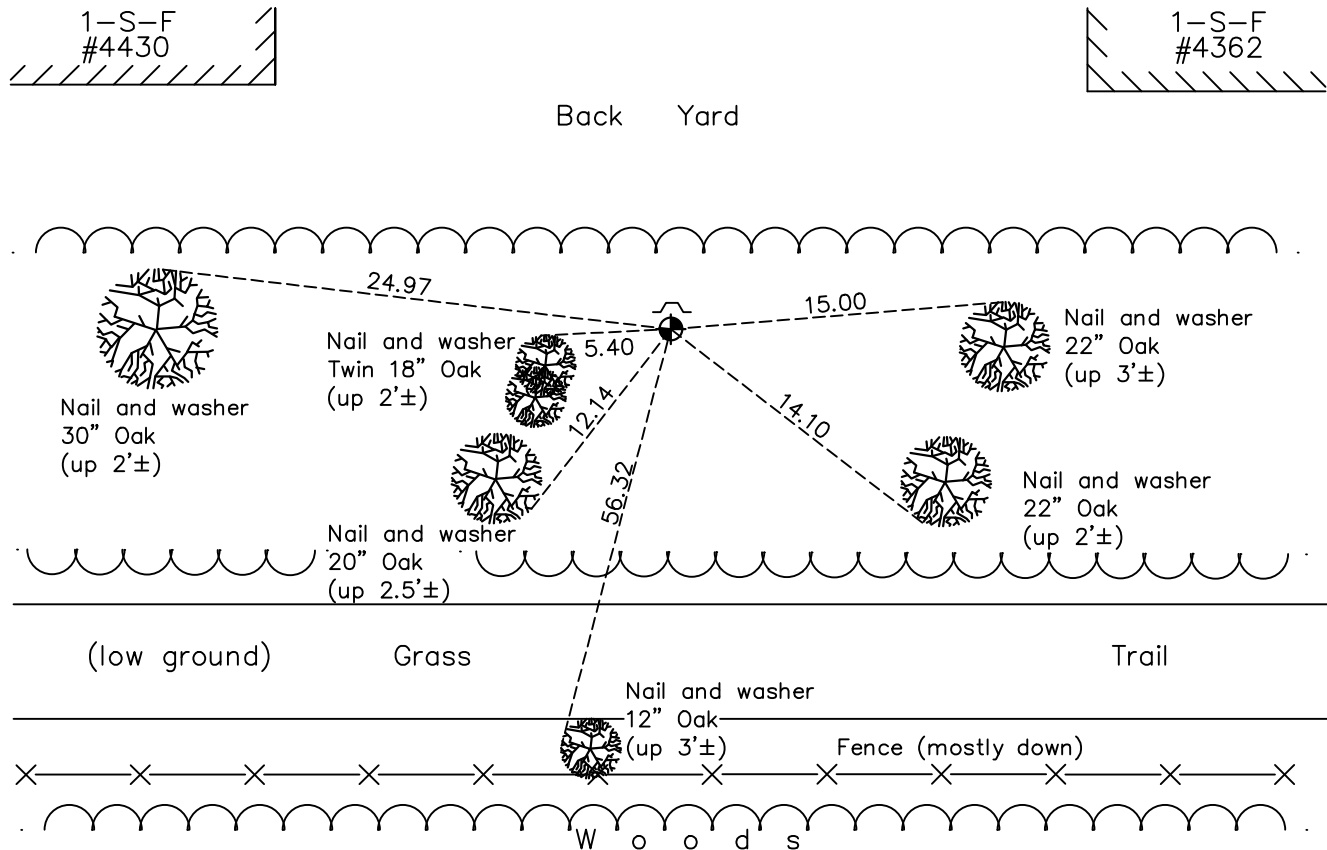
South 1/4 Corner of Sec. 18 Township 33 Range 24

On the 15th day of September, 1964, the described corner was evidenced by area resurvey

and to perpetuate the location of said corner, at the exact location thereof, a permanent marker was placed consisting of a cast iron monument with a sign and post on the north side

AND on the 8th day of December, 2020, said permanent marker was found flush with the surface and the ties were updated

Updated reference ties are as shown below.



Revision Date

06/10/2021

N.A.D. 1983 Coordinates
(1996 Adjustment)

County Project Coordinates	
Northing	<u>211908.9131</u>
Easting	<u>471357.9507</u>
Date	<u>11/09/01</u>

I hereby certify that this United States public land survey monument record is correct and complete to the best of my knowledge and belief.

David M Zieglmeier Date 7/30/21

David Zieglmeier Anoka County Surveyor
Minnesota License Number 46179

HISTORY OF GOVERNMENT CORNER

Page No. 82

County of Anoka

State of Minnesota

South 1/4 Corner of Sec. 18 Township 33 Range 24

CORNER HISTORY:

March 27, 1944 - Harvey Cartwright set a concrete monument using the centerline of road, fence line to the South, 33' North of East/West fence line and 33' South of old woods line. Established ties to monument.

September 15, 1964 - Set cast iron monument flush using area resurvey and irons found to the South. Established ties to cast iron monument. Corner is 235'± West of Cartwright's concrete monument set in 1944.

July 22, 1965 - Found cast iron monument and updated ties.

June 28, 1968 - Found cast iron monument and updated ties.

July 29, 1971 - Found cast iron monument and updated ties.

July 7, 1975 - Found cast iron monument and updated ties.

July 7, 1978 - Found cast iron monument and updated ties.

July 22, 1981 - Found cast iron monument and updated ties.

August 6, 1984 - Found cast iron monument and updated ties.

July 24, 1987 - Found cast iron monument and updated ties.

June 17, 1992 - Found cast iron monument and updated ties.

June 30, 1997 - Found cast iron monument and updated ties.

November 9, 2001 - Established NAD 1983 (1996 adj.) Anoka County project coordinates by static GPS methods.

March 11, 2002 - Found cast iron monument w/sign and post on the North side. Updated ties.

January 20, 2012 - Found cast iron monument and updated ties.

May 3, 2017 - Found cast iron monument flush and updated ties.

December 8, 2020 - Found cast iron monument flush. Verified position by VRS GPS methods. Updated ties.