

CERTIFICATE OF LOCATION OF GOVERNMENT CORNER

County of Anoka

State of Minnesota

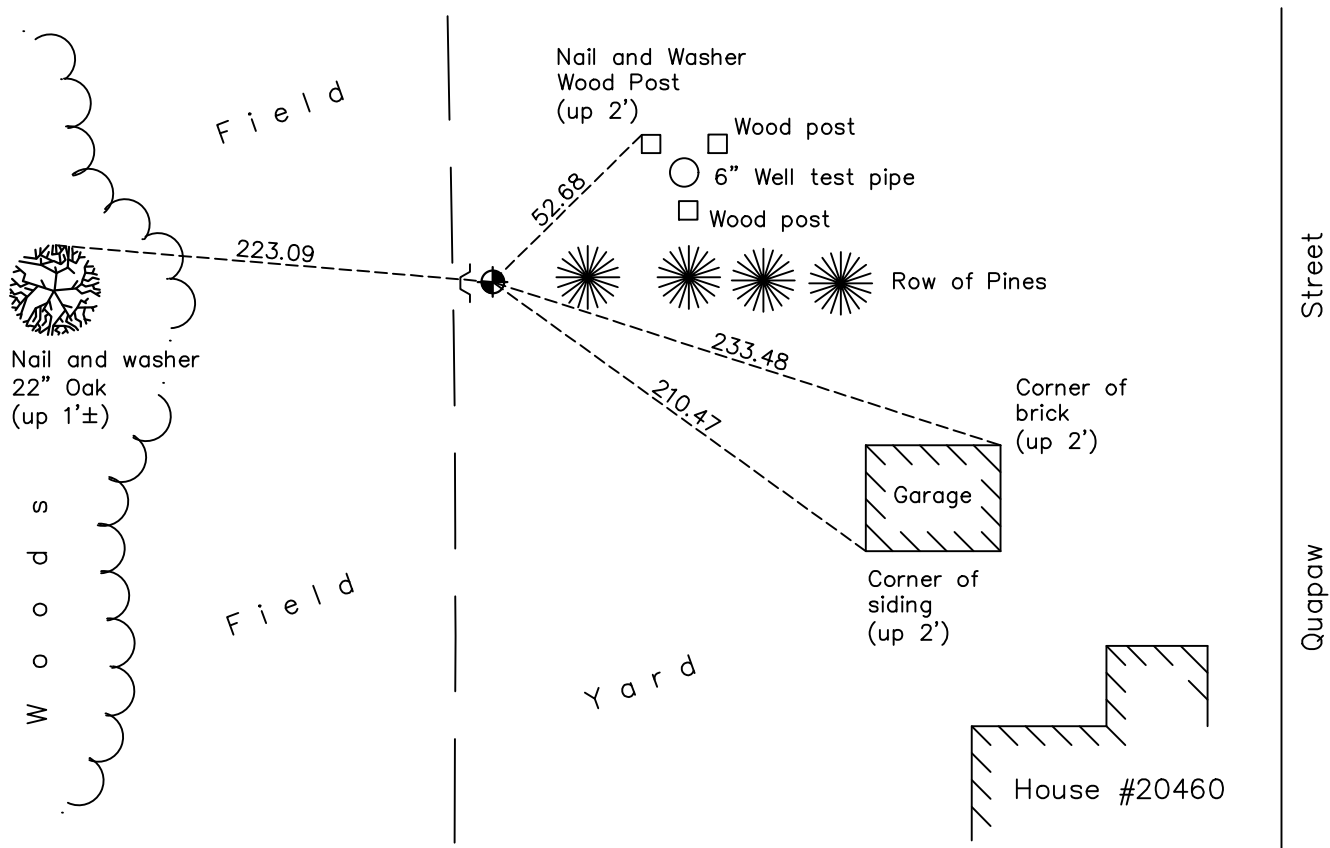
Northwest Corner of Sec. 19 Township 33 Range 24

On the 6th day of April, 1964, the described corner was evidenced by a 4" square concrete monument

and to perpetuate the location of said corner, at the exact location thereof, a permanent marker was placed consisting of a cast iron monument with a sign and post on the west side

AND on the 8th day of December, 2020, said permanent marker was found down 0.5'± with a sign and post on the west side and the ties were updated.

Updated reference ties are as shown below.



Revision Date

06/10/2021

N.A.D. 1983 Coordinates
(1996 Adjustment)

County Project Coordinates	
Northing	<u>211914.8930</u>
Easting	<u>468647.5992</u>
Date	<u>6/28/01</u>

I hereby certify that this United States public land survey monument record is correct and complete to the best of my knowledge and belief.

David M Zieglmeier Date 7/30/21

David Zieglmeier Anoka County Surveyor
Minnesota License Number 46179

HISTORY OF GOVERNMENT CORNER

Page No. 83

County of Anoka

State of Minnesota

Northwest Corner of Sec. 19 Township 33 Range 24

CORNER HISTORY:

March 27, 1944 - Harvey Cartwright set a concrete monument using a found old rotted post on extended fence line from the South and West and center line road from the North and East. Established ties to the monument.

June 1958 - MN Highway Department found a 6" x 6" concrete broken off and re-centered, up 6"±. No ties.

April 6, 1964 - Found 4" x 4" concrete monument w/top broken off flush w/road. Found iron pipes on the Northwest and Southwest corners of monument. Set steel fence post on the West side. Corner ties unavailable.

July 22, 1965 - Found 4" x 4" concrete monument w/top broken off. Found 3/4" iron bar on the Northwest and a 1" iron pipe on the Southeast corners of the monument. Corner ties unavailable.

June 28, 1968 - Found 4" x 4" concrete monument w/top broken off. Corner ties unavailable.

July 27, 1971 - Found concrete monument and replaced with a cast iron monument flush. Set sign and post on the North side. Updated ties.

July 7, 1975 - Found cast iron monument and updated ties.

June 27, 1979 - Found cast iron monument flush w/sign and post on the North side. Updated ties.

July 22, 1981 - Found cast iron monument and updated ties.

August 6, 1984 - Found cast iron monument and updated ties.

June 17, 1992 - Found cast iron monument and updated ties.

June 30, 1997 - Found cast iron monument w/sign and post on the South side. Updated ties.

June 28, 2001 - Established NAD 1983 (1996 adj.) Anoka County project coordinates by static GPS methods.

January 25, 2012 - Found cast iron monument down 0.5'±. Verified position by VRS GPS methods. Updated ties. Set sign and post on the West side 4/5/12.

May 2, 2017 - Found cast iron monument down 0.5'± w/sign and post on the West side. Updated ties.

December 8, 2020 - Found cast iron monument down 0.5'± w/sign and post on the West side. Verified position by VRS GPS methods. Updated ties.