

CERTIFICATE OF LOCATION OF GOVERNMENT CORNER

County of Anoka

State of Minnesota

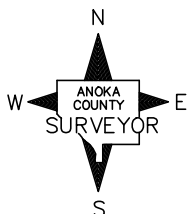
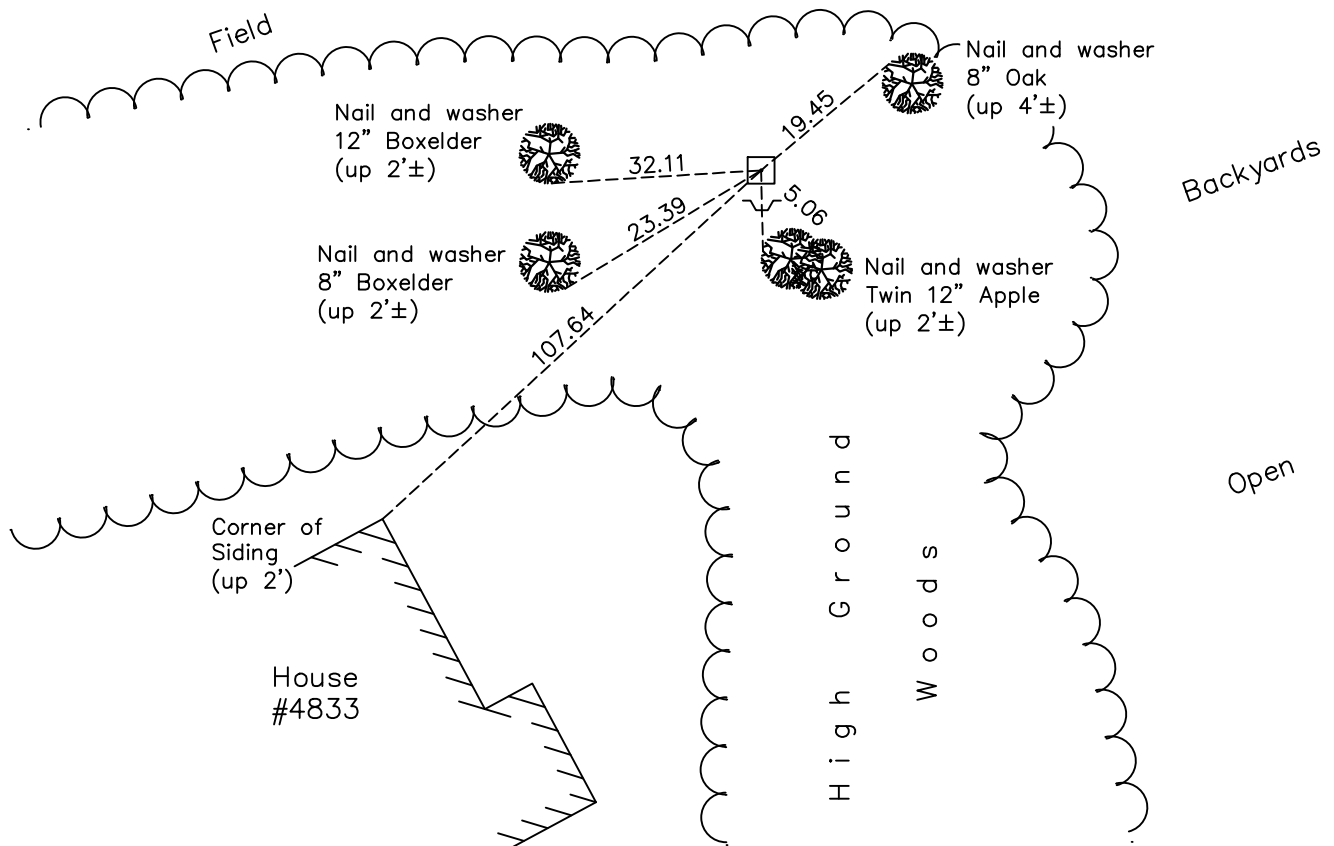
West 1/4 Corner of Sec. 19 Township 33 Range 24

On the 22nd day of July, 1960, the described corner was evidenced by a concrete monument

and to perpetuate the location of said corner, at the exact location thereof, a permanent marker was placed consisting of the same concrete monument with a sign and post on the south side

AND on the 10th day of December, 2020, said permanent marker was found up 0.2'± and the ties were updated

Updated reference ties are as shown below.



Revision Date

06/10/2021

N.A.D. 1983 Coordinates
(1996 Adjustment)

County Project Coordinates	
Northing	209281.8305
Easting	468642.0424
Date	11/07/01

I hereby certify that this United States public land survey monument record is correct and complete to the best of my knowledge and belief.

David M Zieglmeier Date 7/30/21

David Zieglmeier Anoka County Surveyor
Minnesota License Number 46179

HISTORY OF GOVERNMENT CORNER

Page No. 84

County of Anoka

State of Minnesota

West 1/4 Corner of Sec. 19 Township 33 Range 24

CORNER HISTORY:

March 27, 1944 - Harvey Cartwright set a concrete monument using fence lines to the North, South and West. Old ties gone, owners verify location for ore 40 years. Established ties to concrete monument.

July 22, 1960 - Found concrete monument up 6"± and updated ties.

September 7, 1965 - Found concrete monument and updated ties.

July 1, 1968 - Found concrete monument and updated ties.

August 6, 1971 - Found concrete monument and updated ties.

July 17, 1975 - Found concrete monument and updated ties.

July 17, 1978 - Found concrete monument and updated ties.

August 3, 1981 - Found concrete monument and updated ties.

August 30, 1984 - Found concrete monument and updated ties.

June 17, 1992 - Found concrete monument and updated ties.

July 9, 1997 - Found concrete monument w/sign and post on the South side. Updated ties.

November 7, 2001 - Established NAD 1983 (1996 adj.) Anoka County project coordinates by static GPS methods.

January 23, 2012 - Found concrete monument and updated ties.

May 2, 2017 - Found concrete monument up 0.2'± and updated ties.

December 10, 2020 - Found concrete monument up 0.2'± and updated ties.