

CERTIFICATE OF LOCATION OF GOVERNMENT CORNER

County of Anoka

State of Minnesota

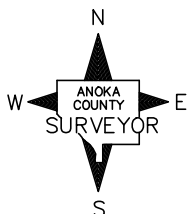
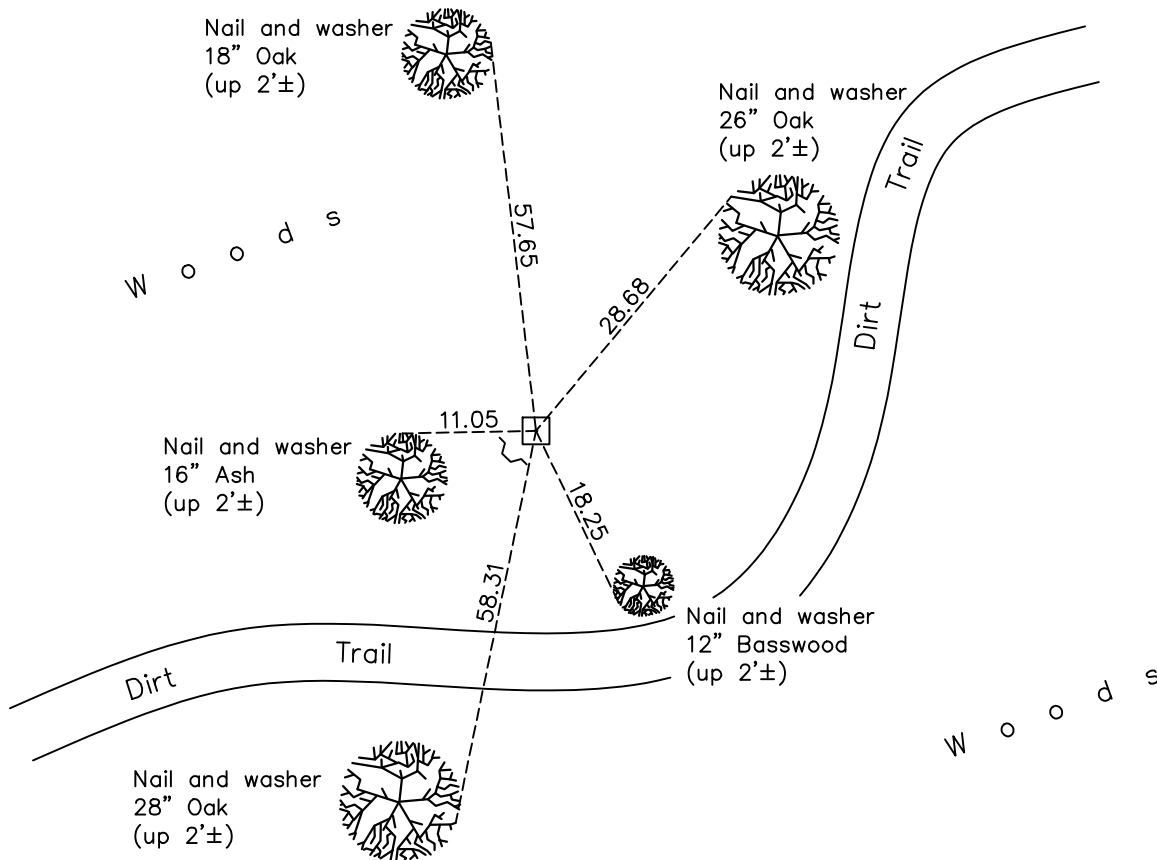
East 1/4 Corner of Sec. 19 Township 33 Range 24

On the 2nd day of December, 1963, the described corner was evidenced by a 4" square concrete monument

and to perpetuate the location of said corner, at the exact location thereof, a permanent marker was placed consisting of the same concrete monument with a sign and post on the south side

AND on the 16th day of April, 2021, said permanent marker was found up 0.2'± and the ties were updated. Sign and post was found on the southwest side.

Updated reference ties are as shown below.



Revision Date

06/10/2021

N.A.D. 1983 Coordinates
(1996 Adjustment)

County Project Coordinates	
Northing	<u>209263.7188</u>
Easting	<u>473946.6120</u>
Date	<u>3/19/02</u>

I hereby certify that this United States public land survey monument record is correct and complete to the best of my knowledge and belief.

David M Zieglmeier Date 7/30/21

David Zieglmeier Anoka County Surveyor
Minnesota License Number 46179

HISTORY OF GOVERNMENT CORNER

Page No. 85

County of Anoka

State of Minnesota

East 1/4 Corner of Sec. 19 Township 33 Range 24

CORNER HISTORY:

March 27, 1944 - Harvey Cartwright set a concrete monument using found well point up 1.0' in mound with old bearing tree stumps of hills B.T.S. Established ties to concrete monuments.

December 3, 1963 - Found 4" square concrete monument down 0.3'± with a 1-1/2" well point sticking up 1'± on the west side. Updated ties.

September 7, 1965 - Found concrete monument and updated ties.

July 1, 1968 - Found concrete monument and updated ties.

August 9, 1971 - Found concrete monument and updated ties.

June 29, 1979 - Found concrete monument and updated ties.

July 23, 1981 - Found concrete monument and updated ties.

August 20, 1984 - Found concrete monument and updated ties.

May 6, 1993 - Found concrete monument up 0.2'± and updated ties. Set sign and post on the South side.

October 26, 1998 - Found concrete monument w/sign and post on west side. Updated ties.

March 19, 2002 - Established NAD 1983 (1996 adj.) Anoka County project coordinates by static GPS methods.

February 9, 2012 - Found concrete monument up 0.2'± and updated ties. Sign and post found far away and reset next to monument on South side 4/5/2012.

May 9, 2017 - Found concrete monument up 0.2'± w/sign and post on the Southwest side. Updated ties.

April 16, 2021 - Found concrete monument up 0.2'± w/sign and post on the Southwest side. Verified position by VRS GPS methods. Updated ties.