

CERTIFICATE OF LOCATION OF GOVERNMENT CORNER

County of Anoka

State of Minnesota

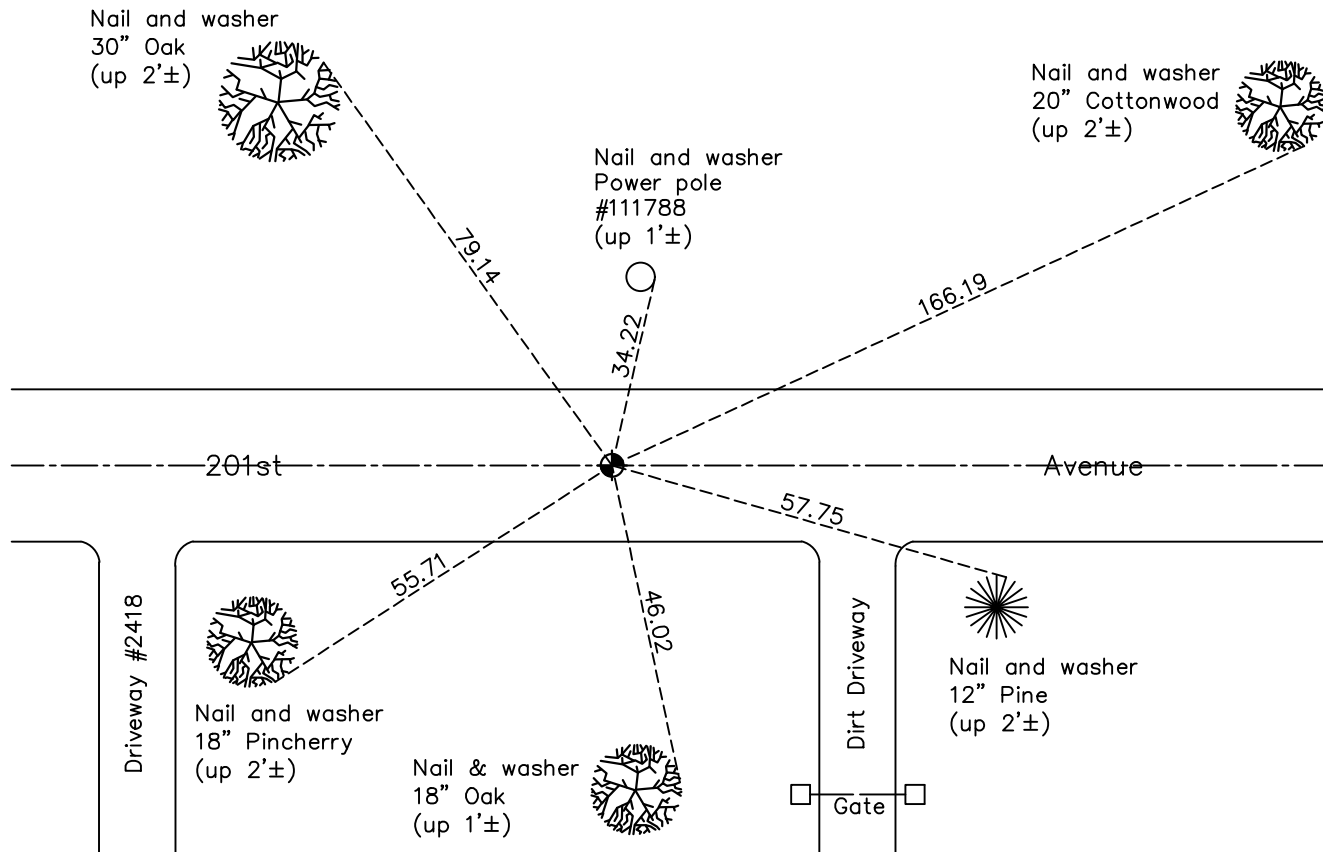
West 1/4 Corner of Sec. 22 Township 33 Range 24

On the 29th day of June, 1960, the described corner was evidenced by a concrete monument

and to perpetuate the location of said corner, at the exact location thereof, a permanent marker was placed consisting of a cast iron monument

AND on the 20th day of November, 2020, said permanent marker was found flush and the ties were updated

Updated reference ties are as shown below.



Revision Date

06/10/2021

N.A.D. 1983 Coordinates
(1996 Adjustment)

County Project Coordinates	
Northing	<u>209024.2553</u>
Easting	<u>484513.8228</u>
Date	<u>4/18/01</u>

I hereby certify that this United States public land survey monument record is correct and complete to the best of my knowledge and belief.

David M Zieglmeier Date 7/30/21

David Zieglmeier Anoka County Surveyor
Minnesota License Number 46179

HISTORY OF GOVERNMENT CORNER

Page No. 87

County of Anoka

State of Minnesota

West 1/4 Corner of Sec. 22 Township 33 Range 24

CORNER HISTORY:

April 30, 1959 - Found concrete monument w/iron axle on East side. Monument is 3'± East of fence line to the North and 5.5'± South of East/West fence line. Updated ties.

June 29, 1960 - Found concrete monument flush with ground and w/iron axle on East side. Updated ties.

July 19, 1965 - Found concrete monument and updated ties.

June 26, 1968 - Found concrete monument and added additional ties prior to road construction.

July 23, 1971 - Found concrete monument down 2.2'± and set a broken (shortened) cast iron monument down 0.3'± on top of concrete monument. Updated ties.

July 3, 1975 - Found cast iron monument and updated ties.

August 4, 1978 - Found road paved and cast iron monument down. Raised monument flush and updated ties.

July 22, 1981 - Found cast iron monument and updated ties.

August 9, 1984 - Found cast iron monument and updated ties.

July 17, 1987 - Found cast iron monument and updated ties.

December 30, 1991 - Found cast iron monument and updated ties.

August 17, 1994 - Found cast iron monument down and raised flush. Updated ties.

May 27, 1997 - Found cast iron monument and updated ties.

April 18, 2001 - Found cast iron monument and updated ties. Established NAD 1983 (1996 adj.) Anoka County project coordinates by static GPS methods.

February 2, 2012 - Found cast iron monument. Verified position by VRS GPS methods. Updated ties.

June 14, 2017 - Found cast iron monument and set construction ties prior to construction. Removed monument.

November 17, 2017 - Set cast iron monument flush after construction. Verified position by VRS GPS methods. Updated ties.

May 22, 2017 - Found cast iron monument flush. Verified position by VRS GPS methods. Updated ties.

November 20, 2020 - Found cast iron monument flush. Updated ties.