

CERTIFICATE OF LOCATION OF GOVERNMENT CORNER

County of Anoka

State of Minnesota

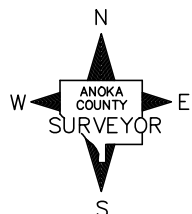
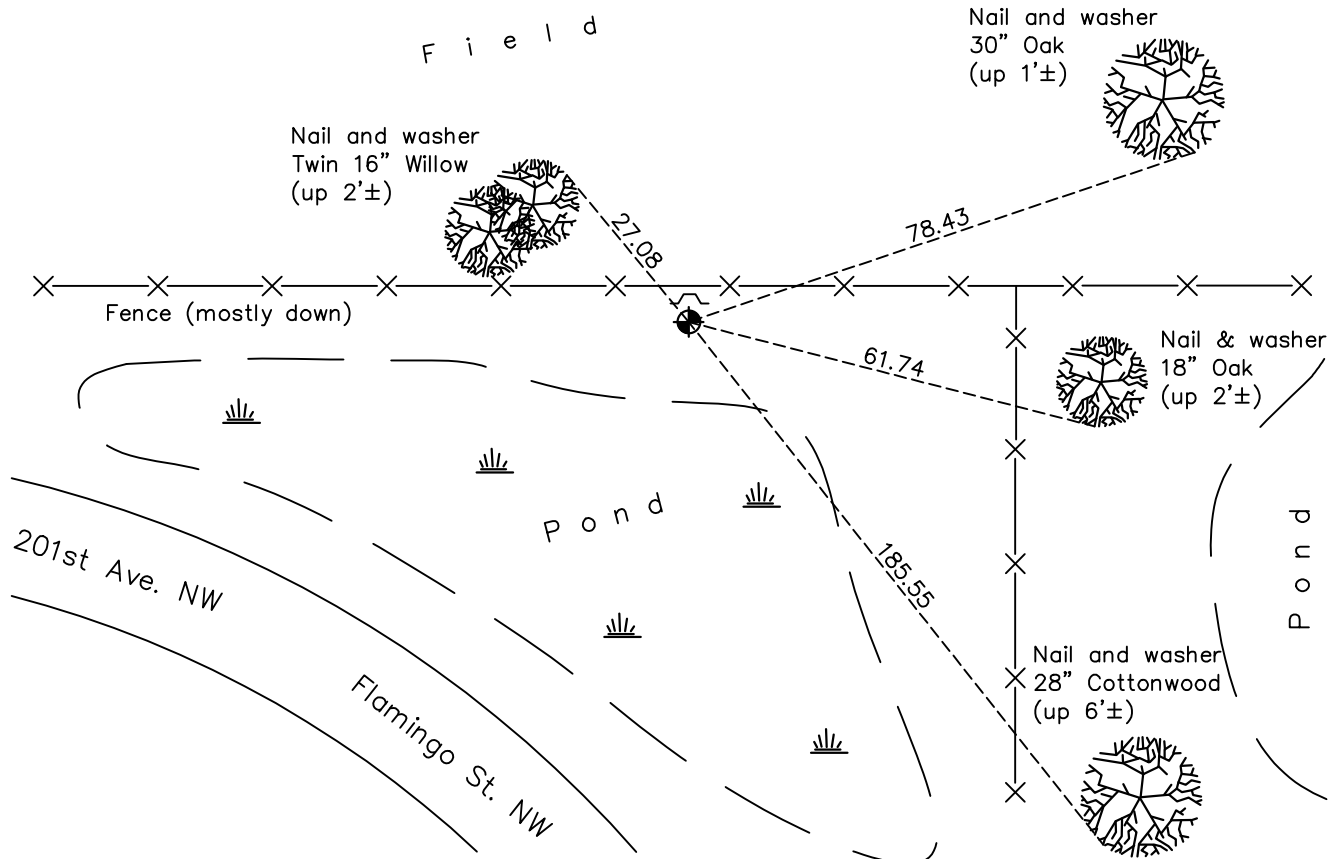
West 1/4 Corner of Sec. 23 Township 33 Range 24

On the 17th day of January, 1973, the described corner was evidenced by area resurvey

and to perpetuate the location of said corner, at the exact location thereof, a permanent marker was placed consisting of a cast iron monument with a sign and post on the north side

AND on the 20th day of November, 2020, said permanent marker was found and the ties were updated

Updated reference ties are as shown below.



Revision Date

06/10/2021

N.A.D. 1983 Coordinates
(1996 Adjustment)

County Project Coordinates

Northing 208977.5869

Easting 489731.7420

Date 3/26/01

I hereby certify that this United States public land survey monument record is correct and complete to the best of my knowledge and belief.

David M Zieglmeier Date 7/30/21

David Zieglmeier Anoka County Surveyor
Minnesota License Number 46179

HISTORY OF GOVERNMENT CORNER

Page No. 89

County of Anoka

State of Minnesota

West 1/4 Corner of Sec. 23 Township 33 Range 24

CORNER HISTORY:

January 17, 1973 - Set iron pipe using area resurvey. Established ties to iron pipe. Set sign and post 1'± North of iron pipe.

July 16, 1975 - Found iron pipe and updated ties.

July 10, 1978 - Found iron pipe and updated ties.

July 21, 1981 - Found iron pipe and updated ties.

August 9, 1984 - Found iron pipe and updated ties.

July 23, 1987 - Found iron pipe and updated ties.

December 31, 1991 - Found iron pipe and updated ties.

May 28, 1997 - Found iron pipe and replaced with a cast iron monument. Updated ties.

March 26, 2001 - Found cast iron monument and updated ties. Established NAD 1983 (1996 adj.) Anoka County project coordinates by static GPS methods.

February 9, 2012 - Found cast iron monument. Verified position by VRS GPS methods. Updated ties.

April 3, 2017 - Found cast iron monument. Verified position by VRS GPS methods. Updated ties.

November 20, 2020 - Found cast iron monument. Updated ties.