

# CERTIFICATE OF LOCATION OF GOVERNMENT CORNER

County of Anoka

State of Minnesota

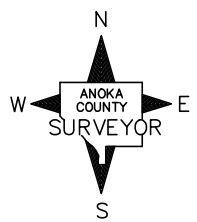
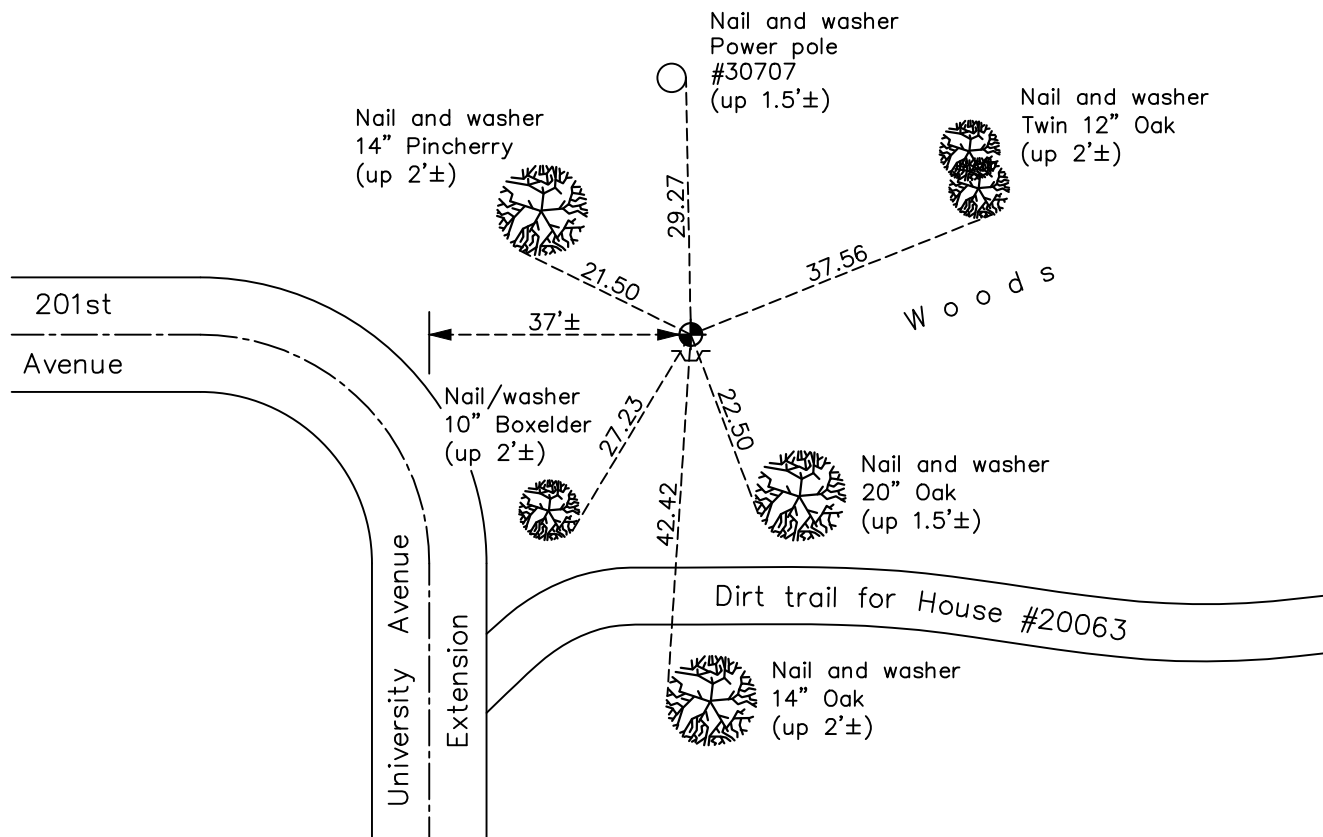
## East 1/4 Corner of Sec. 24 Township 33 Range 24

On the 29th day of July, 1970, the described corner was evidenced by area resurvey

and to perpetuate the location of said corner, at the exact location thereof, a permanent marker was placed consisting of a cast iron monument with a sign and post on the south side

AND on the 24th day of November, 2020, said permanent marker was found and the ties  
were updated

Updated reference ties are as shown below.



Revision Date  
06/11/2021

N.A.D. 1983 Coordinates  
 (1996 Adjustment)

County Project Coordinates	
Northing	<u>209066.8519</u>
Easting	<u>500234.3435</u>
Date	<u>6/11/01</u>

I hereby certify that this United States public land survey monument record is correct and complete to the best of my knowledge and belief.

*David M Zieglmeier* Date 7/30/21

David Zieglmeier Anoka County Surveyor  
 Minnesota License Number 46179

# HISTORY OF GOVERNMENT CORNER

Page No. 91

County of Anoka

State of Minnesota

## East 1/4 Corner of Sec. 24 Township 33 Range 24

### **CORNER HISTORY:**

July 29, 1970 - Set cast iron monument using area resurvey. Established ties to monument.

August 25, 1970 - Found cast iron monument flush and leaning Northwesterly. Reset cast iron monument using two remaining ties. Updated ties.

July 23, 1971 - Found cast iron monument and updated ties.

July 10, 1975 - Found cast iron monument and updated ties.

July 10, 1978 - Found cast iron monument and updated ties.

July 20, 1981 - Found cast iron monument and updated ties.

August 15, 1984 - Found cast iron monument and updated ties.

July 13, 1992 - Found cast iron monument w/sign and post on the South side. Updated ties.

July 2, 1997 - Found cast iron monument and updated ties.

June 23, 2000 - Found cast iron monument and updated ties.

June 11, 2001 - Established NAD 1983 (1996 adj.) Anoka County project coordinates by static GPS methods.

February 10, 2012 - Found cast iron monument. Verified position by VRS GPS methods. Updated ties.

April 3, 2017 - Found cast iron monument and updated ties.

November 24, 2020 - Found cast iron monument and updated ties.