

CERTIFICATE OF LOCATION OF GOVERNMENT CORNER

County of Anoka

State of Minnesota

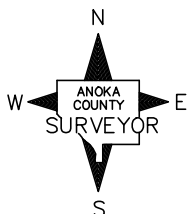
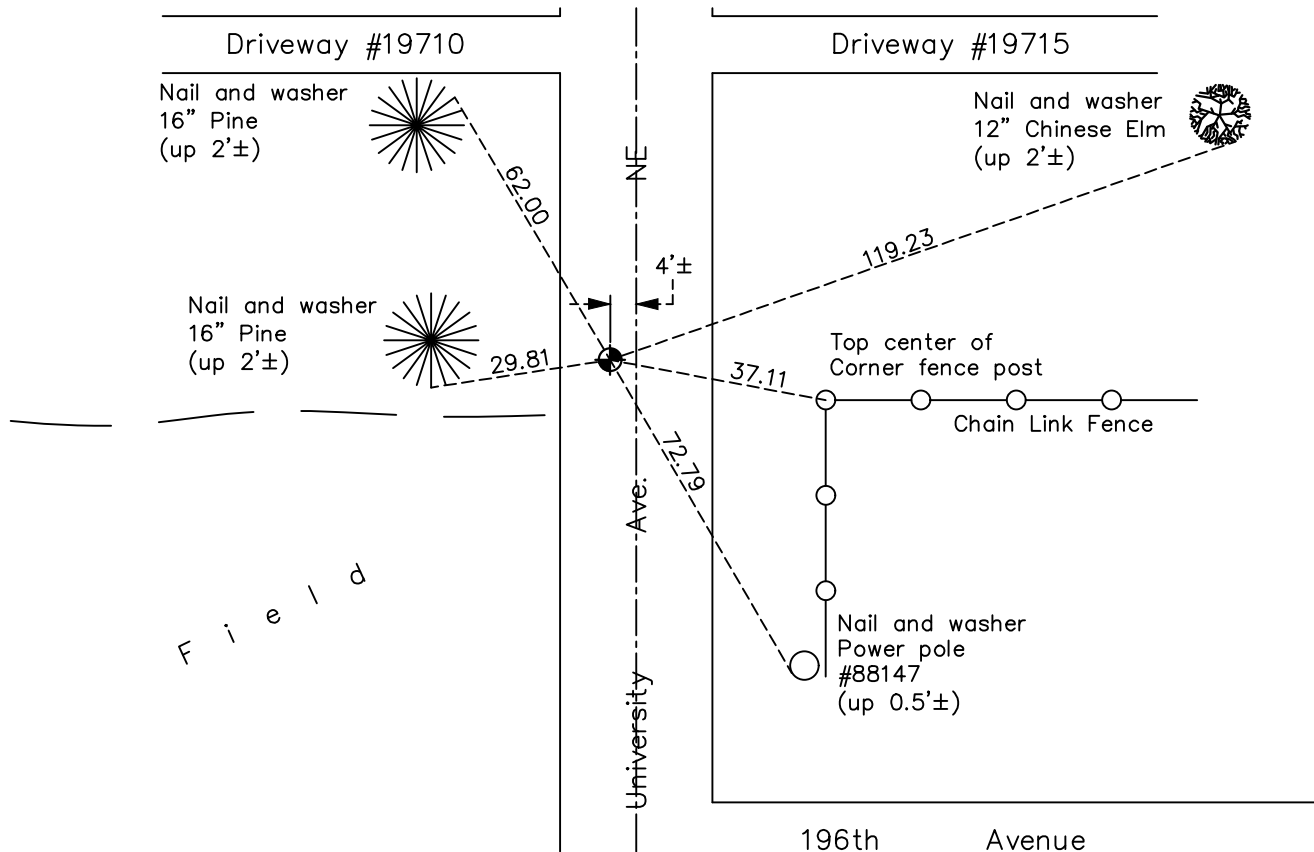
Northeast Corner of Sec. 25 Township 33 Range 24

On the 1st day of August, 1968, the described corner was evidenced by a 3/4" iron pipe

and to perpetuate the location of said corner, at the exact location thereof, a permanent marker was placed consisting of a cast iron monument

AND on the 9th day of December, 2020, said permanent marker was found down 0.2'± and the ties were updated

Updated reference ties are as shown below.



Revision Date

06/11/2021

N.A.D. 1983 Coordinates
(1996 Adjustment)

County Project Coordinates	
Northing	<u>206430.5617</u>
Easting	<u>500223.7371</u>
Date	<u>6/11/01</u>

I hereby certify that this United States public land survey monument record is correct and complete to the best of my knowledge and belief.

David M Zieglmeier Date 7/30/21

David Zieglmeier Anoka County Surveyor
Minnesota License Number 46179

HISTORY OF GOVERNMENT CORNER

Page No. 91A

County of Anoka

State of Minnesota

Northeast Corner of Sec. 25 Township 33 Range 24

CORNER HISTORY:

August 1, 1968 - Found 3/4" iron pipe and replaced with a cast iron monument. Updated ties.

August 11, 1992 - Found cast iron monument and updated ties.

June 17, 1999 - Found solid cast iron monument and replaced with a removable top cast iron monument. Updated ties.

June 20, 2000 - Found cast iron monument and updated ties.

June 11, 2001 - Established NAD 1983 (1996 adj.) Anoka County project coordinates by static GPS methods.

February 10, 2012 - Found cast iron monument down 0.2'±. Verified position by VRS GPS methods. Updated ties.

April 3, 2017 - Found cast iron monument down 0.2'±. Verified position by VRS GPS methods. Updated ties.

December 9, 2020 - Found cast iron monument down 0.2'±. Verified position by VRS GPS methods. Updated ties.