

CERTIFICATE OF LOCATION OF GOVERNMENT CORNER

County of Anoka

State of Minnesota

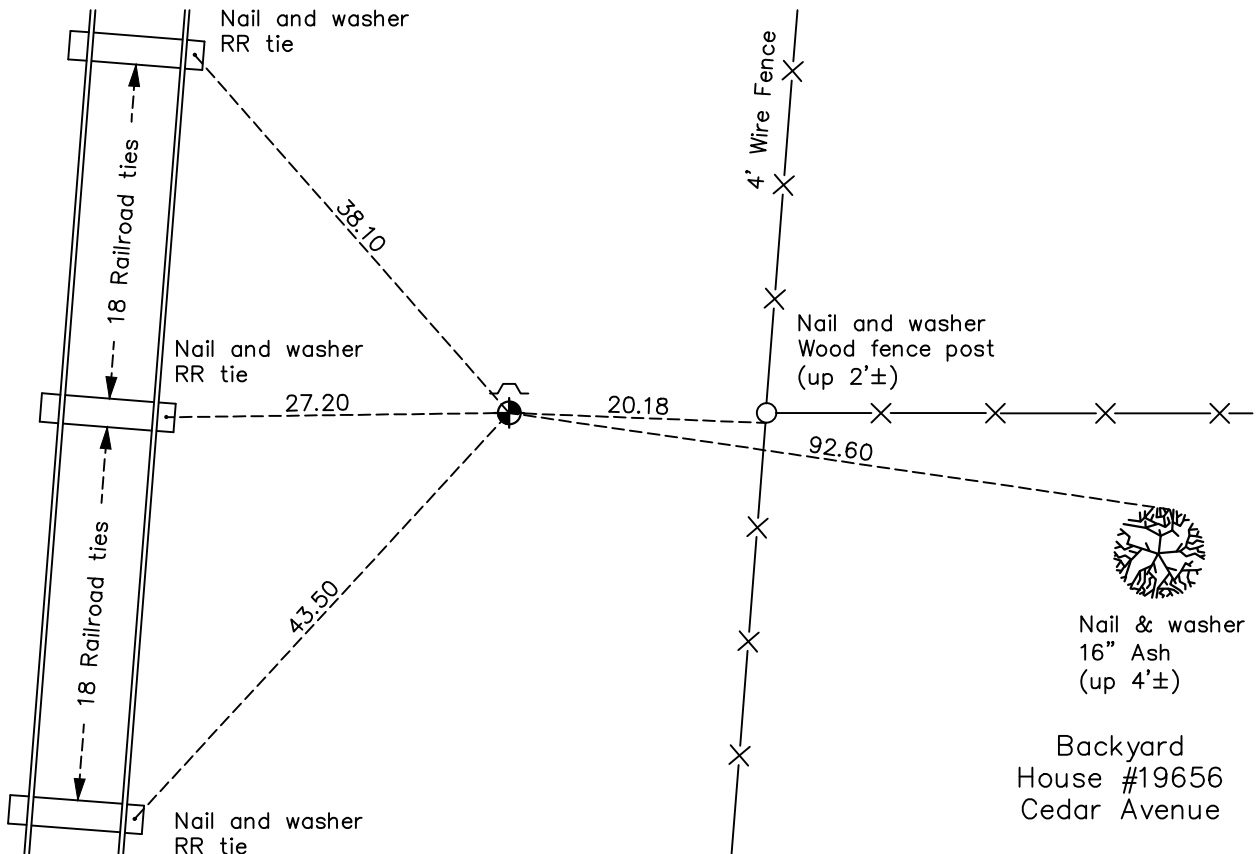
Southeast Corner of Sec. 23 Township 33 Range 24

On the 14th day of May, 1974, the described corner was evidenced by area resurvey

and to perpetuate the location of said corner, at the exact location thereof, a permanent marker was placed consisting of a cast iron monument with a sign and post on the north side

AND on the 4th day of January, 2021, said permanent marker was found up 0.5'± and the ties were updated

Updated reference ties are as shown below.



Revision Date

06/11/2021

N.A.D. 1983 Coordinates
(1996 Adjustment)

County Project Coordinates

Northing 206392.1199

Easting 494962.6173

Date 6/14/01

I hereby certify that this United States public land survey monument record is correct and complete to the best of my knowledge and belief.

David M Zieglmeier Date 7/30/21

David Zieglmeier Anoka County Surveyor

Minnesota License Number 46179

HISTORY OF GOVERNMENT CORNER

Page No. 93

County of Anoka

State of Minnesota

Southeast Corner of Sec. 23 Township 33 Range 24

CORNER HISTORY:

May 14, 1974 - Set cast iron monument flush using area resurvey. Established ties to monument. Set sign and post on the North side.

July 10, 1975 - Found cast iron monument and updated ties.

July 10, 1978 - Found cast iron monument and updated ties.

July 27, 1981 - Found cast iron monument and updated ties.

August 9, 1984 - Found cast iron monument and updated ties.

July 21, 1987 - Found cast iron monument and updated ties.

June 6, 1997 - Found cast iron monument and updated ties.

June 14, 2001 - Found cast iron monument and updated ties. Established NAD 1983 (1996 adj.) Anoka County project coordinates by static GPS methods.

March 26, 2012 - Found cast iron monument up 0.5'± and updated ties.

April 3, 2017 - Found cast iron monument up 0.5'± and updated ties.

January 4, 2021 - Found cast iron monument up 0.5'±. Verified position by VRS GPS methods. And updated ties.