

CERTIFICATE OF LOCATION OF GOVERNMENT CORNER

County of Anoka

State of Minnesota

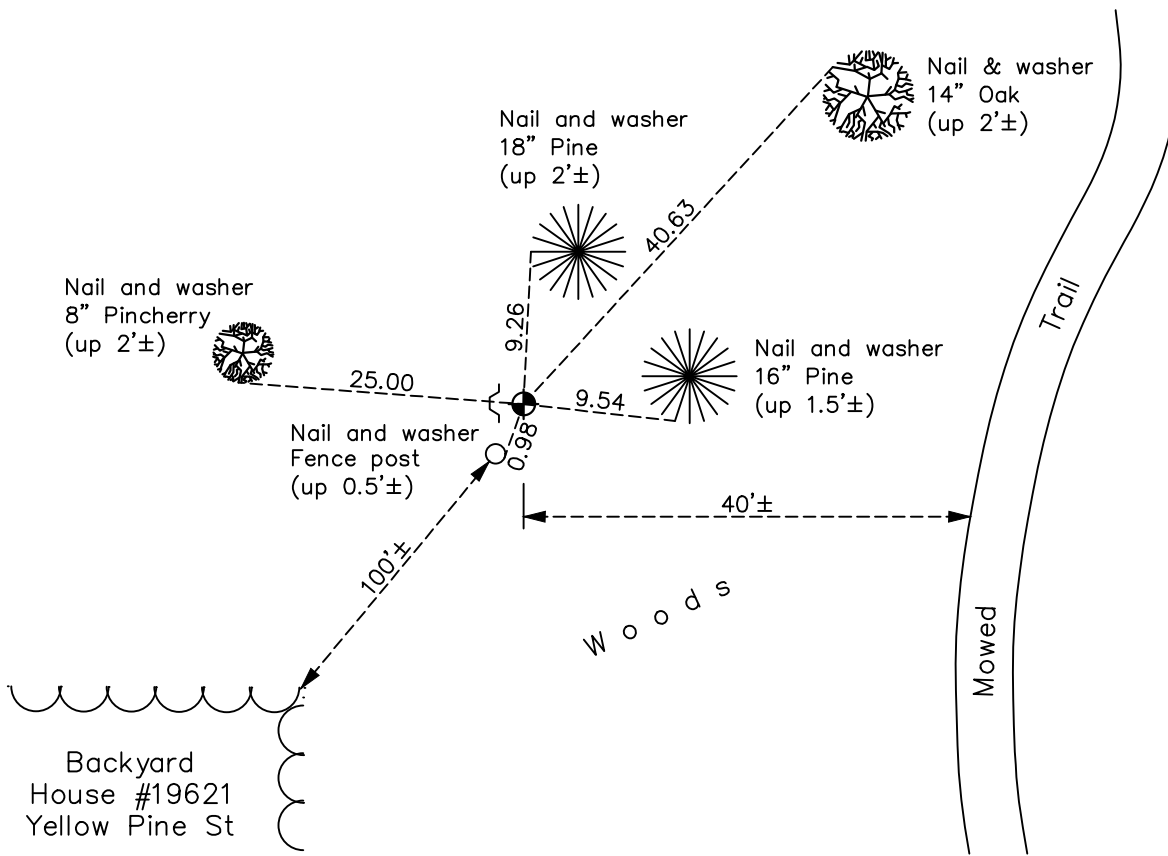
South 1/4 Corner of Sec. 23 Township 33 Range 24

On the 10th day of May, 1974, the described corner was evidenced by area resurvey

and to perpetuate the location of said corner, at the exact location thereof, a permanent marker was placed consisting of a cast iron monument with a sign and post on the west side

AND on the 10th day of December, 2020, said permanent marker was found down 0.3'± and the ties were updated

Updated reference ties are as shown below.



Revision Date

06/11/2021

N.A.D. 1983 Coordinates
(1996 Adjustment)

County Project Coordinates	
Northing	<u>206363.2042</u>
Easting	<u>492375.7372</u>
Date	<u>7/02/01</u>

I hereby certify that this United States public land survey monument record is correct and complete to the best of my knowledge and belief.

David M Zieglmeier Date 7/30/21

David Zieglmeier Anoka County Surveyor
Minnesota License Number 46179

HISTORY OF GOVERNMENT CORNER

Page No. 94

County of Anoka

State of Minnesota

South 1/4 Corner of Sec. 23 Township 33 Range 24

CORNER HISTORY:

May 10, 1974 - Set cast iron monument flush using area resurvey. Established ties to monument.

July 10, 1975 - Found cast iron monument and updated ties.

July 10, 1978 - Found cast iron monument and updated ties.

August 3, 1981 - Found cast iron monument and updated ties.

August 15, 1984 - Found cast iron monument and updated ties.

July 15, 1992 - Found cast iron monument and updated ties.

July 9, 1997 - Found cast iron monument w/sign and post on the west side. Updated ties.

July 2, 2001 - Established NAD 1983 (1996 adj.) Anoka County project coordinates by static GPS methods.

February 13, 2012 - Found cast iron monument down 0.3'± and updated ties.

May 25, 2017 - Found cast iron monument down 0.3'± and updated ties.

December 10, 2020 - Found cast iron monument down 0.3'± and updated ties.