

CERTIFICATE OF LOCATION OF GOVERNMENT CORNER

County of Anoka

State of Minnesota

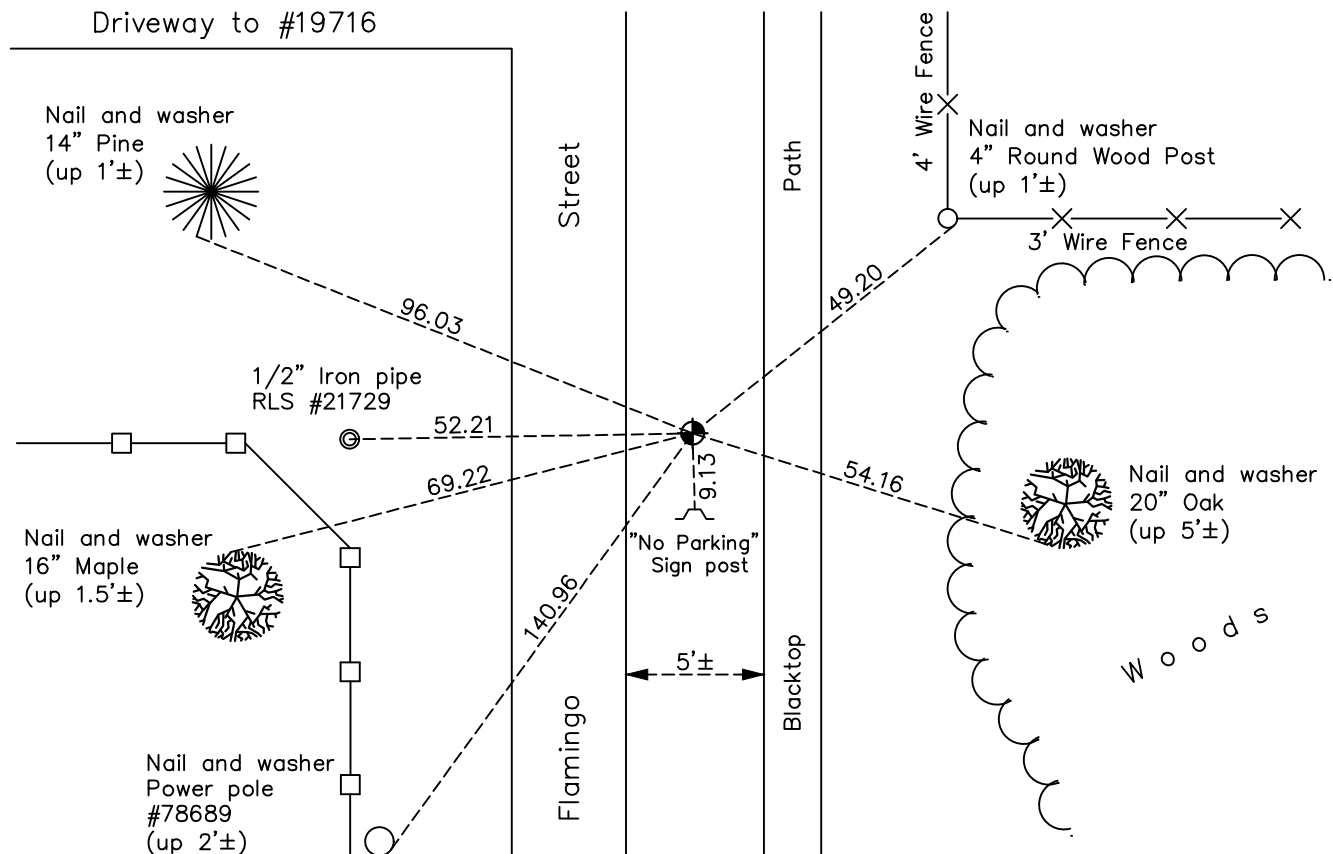
Northeast Corner of Sec. 27 Township 33 Range 24

On the 6th day of August, 1967, the described corner was evidenced by a granite monument

and to perpetuate the location of said corner, at the exact location thereof, a permanent marker was placed consisting of a cast iron monument

AND on the 20th day of November, 2020, said permanent marker was found flush and the ties were updated

Updated reference ties are as shown below.



N.A.D. 1983 Coordinates
(1996 Adjustment)

County Project Coordinates	
Northing	<u>206349.4634</u>
Easting	<u>489787.7439</u>
Date	<u>6/14/01</u>

I hereby certify that this United States public land survey monument record is correct and complete to the best of my knowledge and belief.

David M Zieglmeier Date 7/30/21

David Zieglmeier Anoka County Surveyor
Minnesota License Number 46179

Revision Date
06/11/2021

HISTORY OF GOVERNMENT CORNER

Page No. 95

County of Anoka

State of Minnesota

Northeast Corner of Sec. 27 Township 33 Range 24

CORNER HISTORY:

Unknown date - Found squared hole with a granite monument laying beside the hole. Tied in to area resurvey.

August 20, 1964 - Found 1" iron pipe flush using ties of 1960 by R.M. Knutson. Updated ties.

August 6, 1967 - Set cast iron monument flush at the position of removed granite monument. Updated ties.

July 3, 1968 - Found cast iron monument and updated ties.

July 26, 1968 - Appears that a new fence post was put in and the 1" iron pipe was reset up 1'± on southwest side of corner fence post. Updated ties to 1" iron pipe.

July 26, 1971 - Found cast iron monument and updated ties.

July 9, 1975 - Found cast iron monument and updated ties.

July 10, 1978 - Found cast iron monument and updated ties.

July 27, 1981 - Found cast iron monument and updated ties.

August 9, 1984 - Found cast iron monument and updated ties.

October 28, 1986 - Reset cast iron monument after ditch construction. Updated ties.

July 17, 1987 - Found cast iron monument and updated ties.

December 31, 1991 - Found cast iron monument and updated ties.

May 28, 1997 - Found cast iron monument and updated ties.

June 14, 2001 - Found cast iron monument and updated ties. Established NAD 1983 (1996 adj.) Anoka County project coordinates by static GPS methods.

February 3, 2012 - Found cast iron monument missing and no remaining corner ties. Set temporary spike using VRS GPS methods.

June 24, 2013 - Set cast iron monument using static GPS methods. Verified position by VRS GPS methods. Updated ties.

April 3, 2017 - Found cast iron monument. Verified position by VRS GPS methods. Updated ties.

November 20, 2020 - Found cast iron monument flush. Updated ties.