

# CERTIFICATE OF LOCATION OF GOVERNMENT CORNER

County of Anoka

State of Minnesota

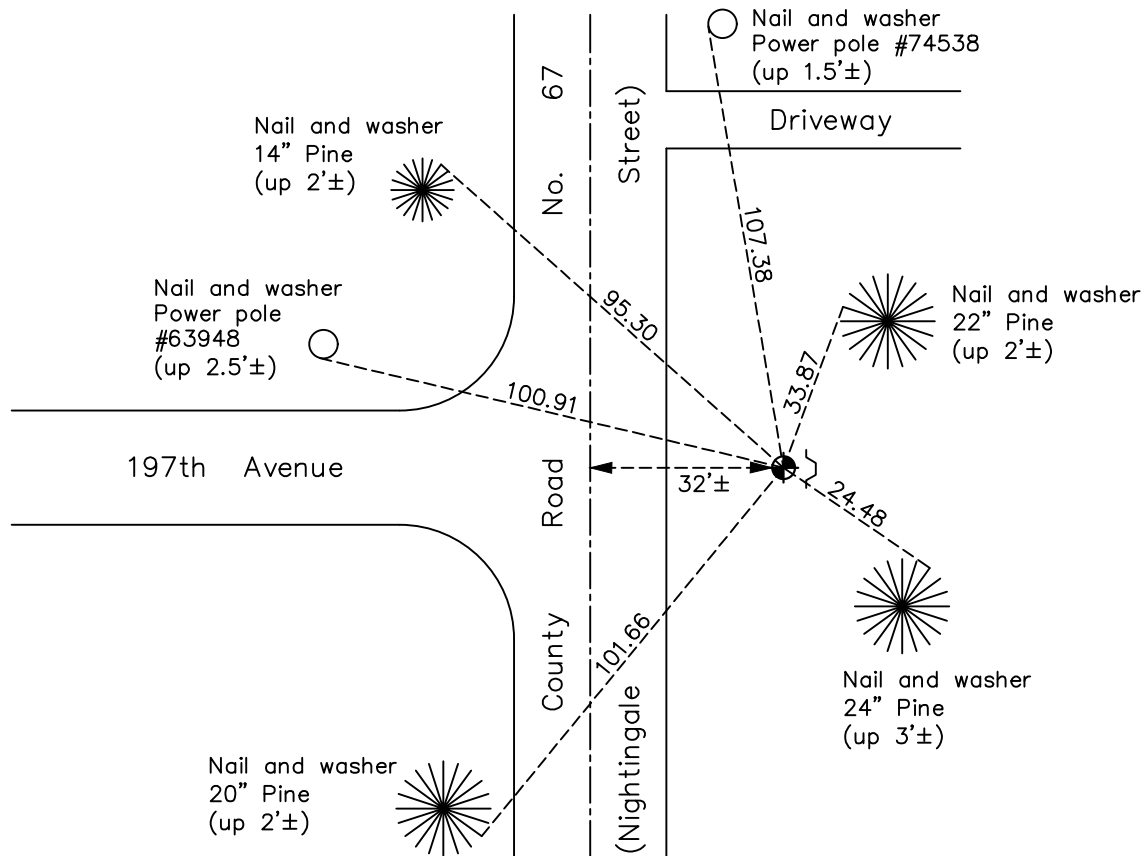
## North 1/4 Corner of Sec. 27 Township 33 Range 24

On the 5th day of August, 1967, the described corner was evidenced by area resurvey

and to perpetuate the location of said corner, at the exact location thereof, a permanent marker was placed consisting of a cast iron monument with a sign and post on the east side

AND on the 10th day of December, 2020, said permanent marker was found down 0.3'± with a sign and post on the east side and the ties were updated.

Updated reference ties are as shown below.



Revision Date

06/11/2021

N.A.D. 1983 Coordinates  
(1996 Adjustment)

County Project Coordinates	
Northing	<u>206367.3201</u>
Easting	<u>487137.2690</u>
Date	<u>7/02/01</u>

I hereby certify that this United States public land survey monument record is correct and complete to the best of my knowledge and belief.

*David M Zieglmeier* Date 7/30/21

David Zieglmeier Anoka County Surveyor  
Minnesota License Number 46179

# HISTORY OF GOVERNMENT CORNER

Page No. 96

County of Anoka

State of Minnesota

## North 1/4 Corner of Sec. 27 Township 33 Range 24

### **CORNER HISTORY:**

August 5, 1967 - Set cast iron monument using area resurvey. Established ties to monument.

June 26, 1968 - Found cast iron monument and updated ties.

July 23, 1971 - Found cast iron monument flush and updated ties.

July 10, 1975 - Found cast iron monument and updated ties.

July 11, 1978 - Found cast iron monument and updated ties.

July 22, 1981 - Found cast iron monument and updated ties.

August 9, 1984 - Found cast iron monument and updated ties.

July 22, 1987 - Found cast iron monument and updated ties.

December 31, 1991 - Found cast iron monument and updated ties.

June 4, 1997 - Found cast iron monument and updated ties.

July 2, 2001 - Established NAD 1983 (1996 adj.) Anoka County project coordinates by static GPS methods.

February 3, 2012 - Found cast iron monument down 0.3'±. Verified position by VRS GPS methods. Updated ties. Set sign and post on the east side 4/4/2012.

May 24, 2017 - Found cast iron monument down 0.3'± w/sign and post on the east side. Updated ties.

December 10, 2020 - Found cast iron monument down 0.3'± w/sign and post on the east side. Verified position by VRS GPS methods. Updated ties.