

CERTIFICATE OF LOCATION OF GOVERNMENT CORNER

County of Anoka

State of Minnesota

Witness Corner of Sec. 27 Township 33 Range 24

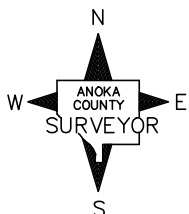
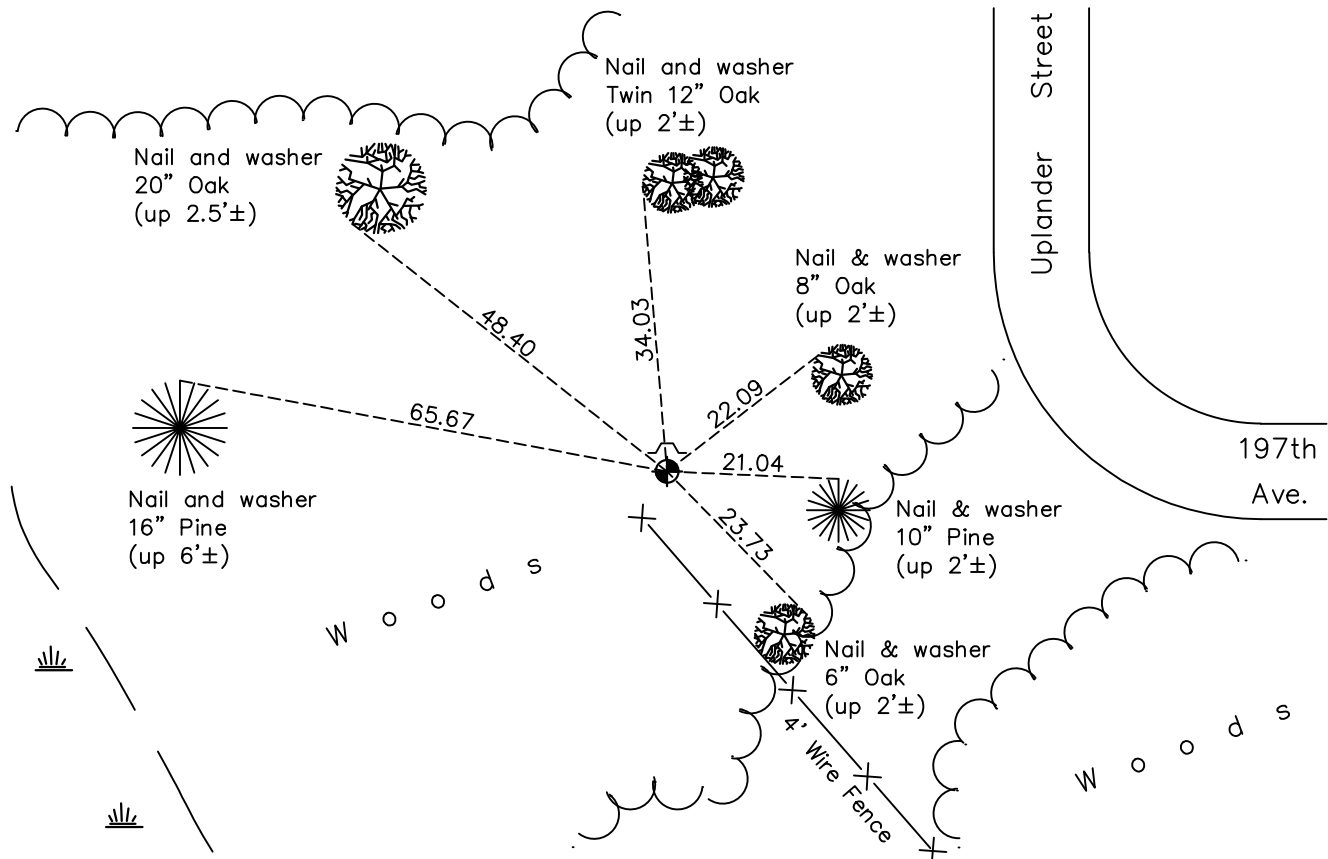
(on north line of NW1/4)

On the 28th day of February, 1991, the described corner was evidenced by area resurvey

and to perpetuate the location of said corner, at the exact location thereof, a permanent marker was placed consisting of a cast iron monument with a sign and post on the north side

AND on the 10th day of December, 2020, said permanent marker was found flush and the ties were updated

Updated reference ties are as shown below.



Revision Date

06/11/2021

N.A.D. 1983 Coordinates
(1996 Adjustment)

County Project Coordinates	
Northing	<u>206388.6378</u>
Easting	<u>485092.5035</u>
Date	<u>2/20/02</u>

I hereby certify that this United States public land survey monument record is correct and complete to the best of my knowledge and belief.

David M Zieglmeier Date 7/30/21

David Zieglmeier Anoka County Surveyor
Minnesota License Number 46179

HISTORY OF GOVERNMENT CORNER

Page No. 96A

County of Anoka

State of Minnesota

Witness Corner of Sec. 27 Township 33 Range 24
(on north line of NW1/4)

CORNER HISTORY:

February 28, 1991 - Set 1/2" iron pipe using area resurvey. Established ties to iron pipe. Set sign and poet on the north side.

December 30, 1991 - Found cast iron monument (unknown set date) and updated ties.

June 24, 1997 - Found cast iron monument and updated ties.

February 20, 2002 - Found cast iron monument and updated ties. Established NAD 1983 (1996 adj.) Anoka County project coordinates by static GPS methods.

February 2, 2012 - Found cast iron monument. Verified position by VRS GPS methods. Updated ties.

May 24, 2017 - Found cast iron monument flush and updated ties.

December 10, 2020 - Found cast iron monument flush. Verified position by VRS GPS methods. Updated ties.