

# CERTIFICATE OF LOCATION OF GOVERNMENT CORNER

County of Anoka

State of Minnesota

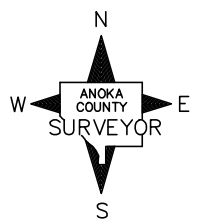
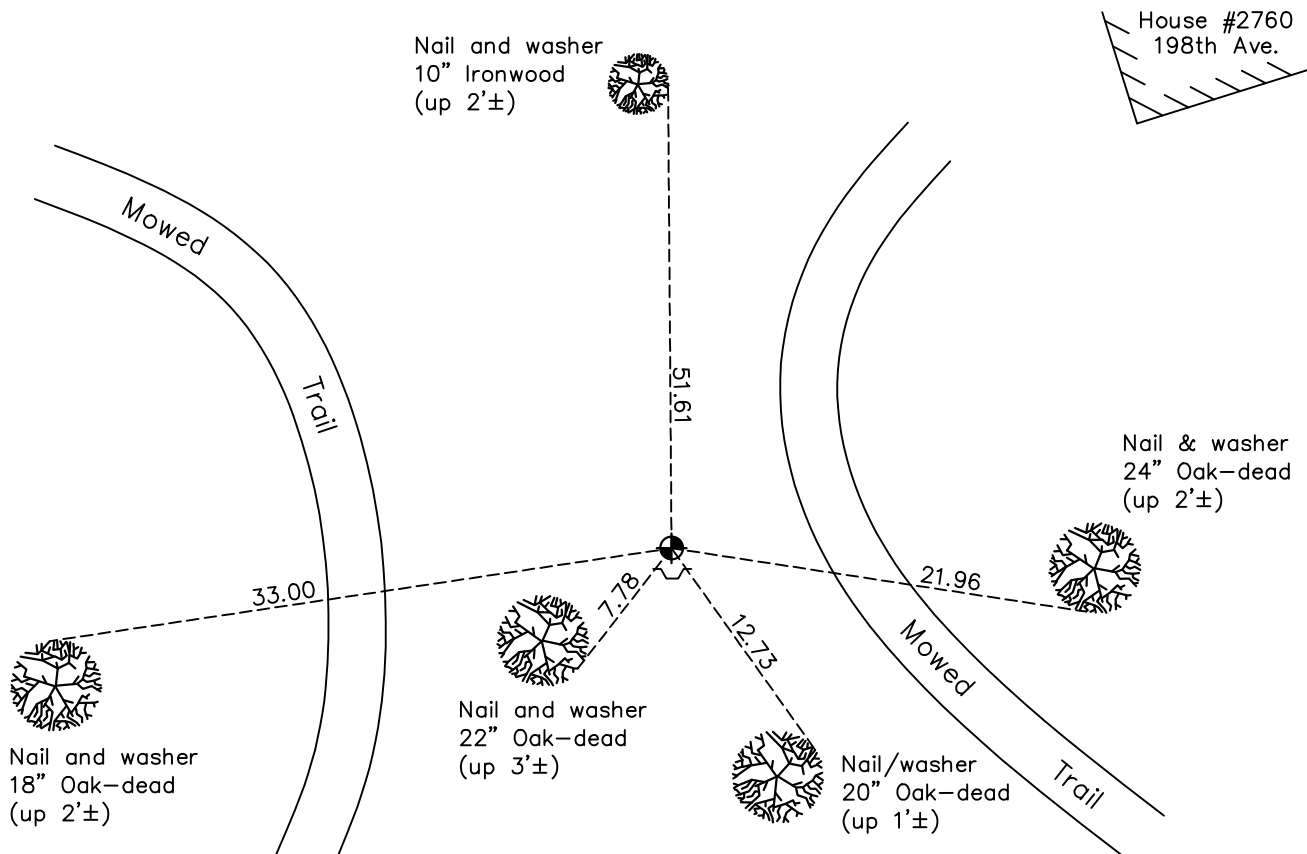
## South 1/4 Corner of Sec. 21 Township 33 Range 24

On the 4th day of April, 1973, the described corner was evidenced by a sandstone monument

and to perpetuate the location of said corner, at the exact location thereof, a permanent marker was placed consisting of a cast iron monument with a sign and post on the south side

AND on the 10th day of December, 2020, said permanent marker was found down 0.1'± and the ties were updated

Updated reference ties are as shown below.



N.A.D. 1983 Coordinates  
(1996 Adjustment)

County Project Coordinates	
Northing	<u>206437.5915</u>
Easting	<u>481932.7765</u>
Date	<u>2/21/02</u>

Revision Date  
06/11/2021

I hereby certify that this United States public land survey monument record is correct and complete to the best of my knowledge and belief.

*David M Zieglmeier* Date 7/30/21

David Zieglmeier Anoka County Surveyor  
Minnesota License Number 46179

# HISTORY OF GOVERNMENT CORNER

Page No. 98

County of Anoka

State of Minnesota

South 1/4 Corner of Sec. 21 Township 33 Range 24

## **CORNER HISTORY:**

April 4, 1973 - Found 6" x 12" x 1'-6" sandstone monument on south side of corner fence post with a "+" mark in top center of monument. Updated ties.

July 11, 1978 - Found sandstone monument and updated ties.

July 28, 1981 - Found sandstone monument and updated ties.

August 17, 1984 - Found sandstone monument and updated ties.

July 31, 1987 - Found sandstone monument and updated ties.

May 7, 1993 - Found sandstone monument and replaced with a cast iron monument flush. Updated ties. Set sign and post on the south side.

July 7, 1997 - Found cast iron monument and updated ties.

February 21, 2002 - Found cast iron monument and updated ties. Established NAD 1983 (1996 adj.) Anoka County project coordinates by static GPS methods.

February 13, 2012 - Found cast iron monument and updated ties.

May 24, 2017 - Found cast iron monument down 0.1'± and updated ties.

December 10, 2020 - Found cast iron monument down 0.1'± and updated ties.