

# CERTIFICATE OF LOCATION OF GOVERNMENT CORNER

County of Anoka

State of Minnesota

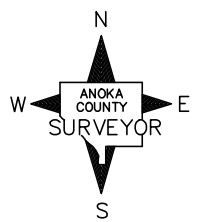
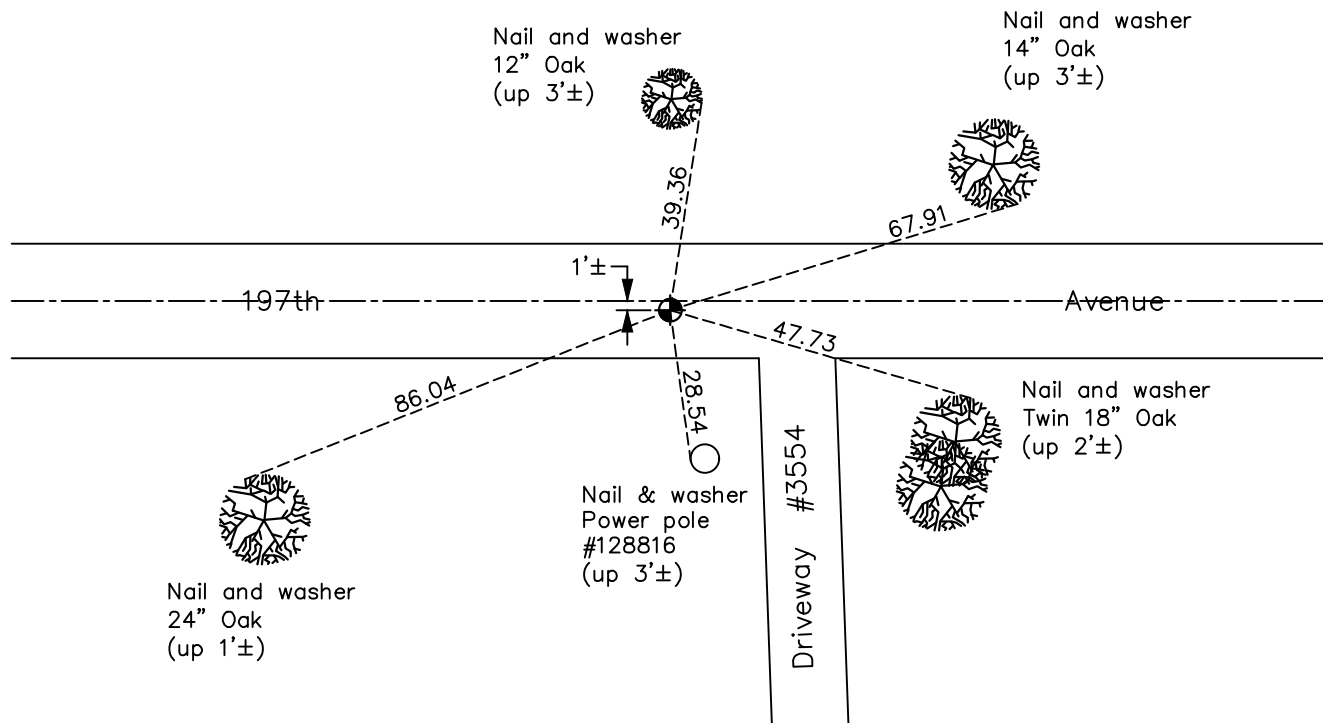
## North 1/4 Corner of Sec. 29 Township 33 Range 24

On the 23rd day of July, 1965, the described corner was evidenced by a 1-1/2" well point

and to perpetuate the location of said corner, at the exact location thereof, a permanent marker was placed consisting of a cast iron monument

AND on the 8th day of December, 2020, said permanent marker was found down 0.2'± and the ties were updated

Updated reference ties are as shown below.



Revision Date  
06/11/2021

N.A.D. 1983 Coordinates  
(1996 Adjustment)

County Project Coordinates	
Northing	<u>206496.7214</u>
Easting	<u>476598.8371</u>
Date	<u>2/15/01</u>

I hereby certify that this United States public land survey monument record is correct and complete to the best of my knowledge and belief.

*David M Zieglmeier* Date 7/30/21

David Zieglmeier Anoka County Surveyor  
Minnesota License Number 46179

# HISTORY OF GOVERNMENT CORNER

Page No. 100

County of Anoka

State of Minnesota

## North 1/4 Corner of Sec. 29 Township 33 Range 24

### **CORNER HISTORY:**

1961 - Robert M. Knudson found a 2" well point and updated the ties.

July 23, 1965 - Found 1'-1/2" well point down 1.2'± using 1961 ties by R.M. Knudson. Well point falls 9'± west of fence line to the North and on centerline of dirt road. Updated ties.

June 28, 1968 - Found well point and updated ties.

September 2, 1969 - Found well point and replaced with a cast iron monument down 0.5'±. Updated ties.

July 26, 1971 - Found cast iron monument and updated ties.

July 14, 1975 - Found cast iron monument down and raised flush with blacktop. Updated ties.

July 11, 1978 - Found cast iron monument and updated ties.

July 21, 1981 - Found cast iron monument and updated ties.

August 3, 1984 - Found cast iron monument and updated ties.

July 21, 1987 - Found cast iron monument and updated ties.

December 30, 1991 - Found cast iron monument and updated ties.

August 17, 1994 - Found cast iron monument down and raised flush. Updated ties.

May 27, 1997 - Found cast iron monument and updated ties.

February 15, 2001 - Found cast iron monument and updated ties. Established NAD 1983 (1996 adj.) Anoka County project coordinates by static GPS methods.

February 24, 2012 - Found cast iron monument. Verified position by VRS GPS methods. Updated ties.

April 13, 2017 - Found cast iron monument down 0.2'±. Verified position by VRS GPS methods. Updated ties.

December 8, 2020 - Found cast iron monument down 0.2'±. Verified position by VRS GPS methods. Updated ties