

CERTIFICATE OF LOCATION OF GOVERNMENT CORNER

County of Anoka

State of Minnesota

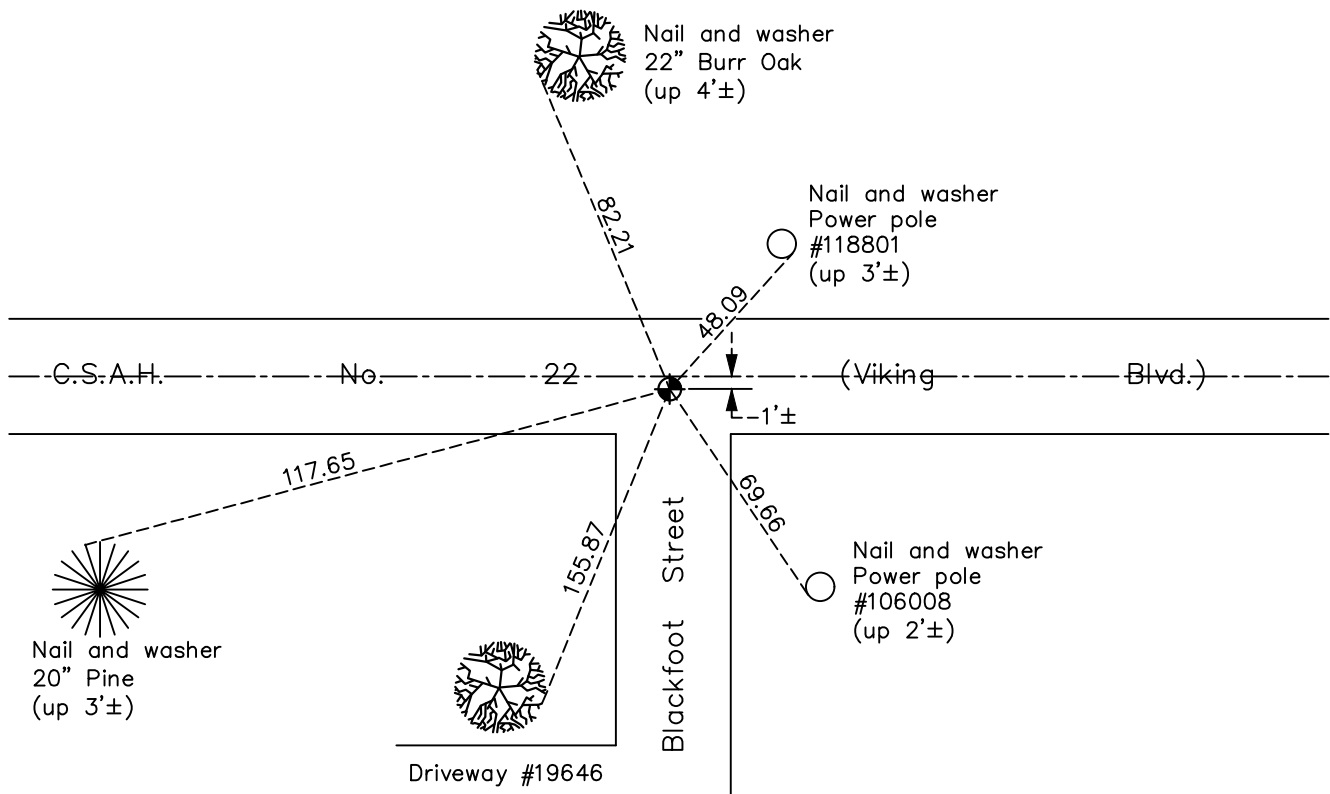
Northwest Corner of Sec. 29 Township 33 Range 24

On the 13th day of July, 1960, the described corner was evidenced by a concrete monument

and to perpetuate the location of said corner, at the exact location thereof, a permanent marker was placed consisting of a cast iron monument

AND on the 5th day of December, 2022, said permanent marker was found flush with the surface and the ties were updated

Updated reference ties are as shown below.



Revision Date

12/06/2022

N.A.D. 1983 Coordinates
(1996 Adjustment)

County Project Coordinates	
Northing	<u>206546.3132</u>
Easting	<u>473966.2814</u>
Date	<u>2/15/01</u>

I hereby certify that this United States public land survey monument record is correct and complete to the best of my knowledge and belief.

David Zieglmeier Date 6/28/23

David Zieglmeier Anoka County Surveyor
Minnesota License Number 46179

HISTORY OF GOVERNMENT CORNER

Page No. 101

County of Anoka

State of Minnesota

Northwest Corner of Sec. 29 Township 33 Range 24

CORNER HISTORY:

Date:

March 27, 1944 - Replaced 4' x 1" Iron Pipe with concrete monument down 0.8'± and updated ties

July 13, 1960 - Found concrete monument flush and updated ties

July 27, 1965 - Found concrete monument with top broken off, set 1/2" IP on N. side. Updated ties.

June 28, 1968 - Removed Concrete monument w/ top broken off and replaced with cast iron monument. Updated ties set down 0.5' ±

July 11, 1978 - Raised Cast Iron Monument and updated ties

July 21, 1981 - Found cast iron monument and updated ties

August 6, 1984 - Found cast iron monument and updated ties

December 30, 1991 - Found cast iron monument and updated ties

May 27, 1997 - Found cast iron monument and updated ties

February 15, 2001 - Found cast iron monument and updated ties

May 24, 2005 - Set construction ties and removed Cast Iron monument for road construction

December 08, 2010 - Found cast iron monument and updated ties

February 24, 2012 - Found cast iron monument flush, verified position by VRS GPS method, updated ties

April 11, 2017 - Found cast iron monument flush, verified position by VRS GPS method, updated ties

December 5, 2022 - Found cast iron monument flush, verified position by VRS GPS method, updated ties