

CERTIFICATE OF LOCATION OF GOVERNMENT CORNER

County of Anoka

State of Minnesota

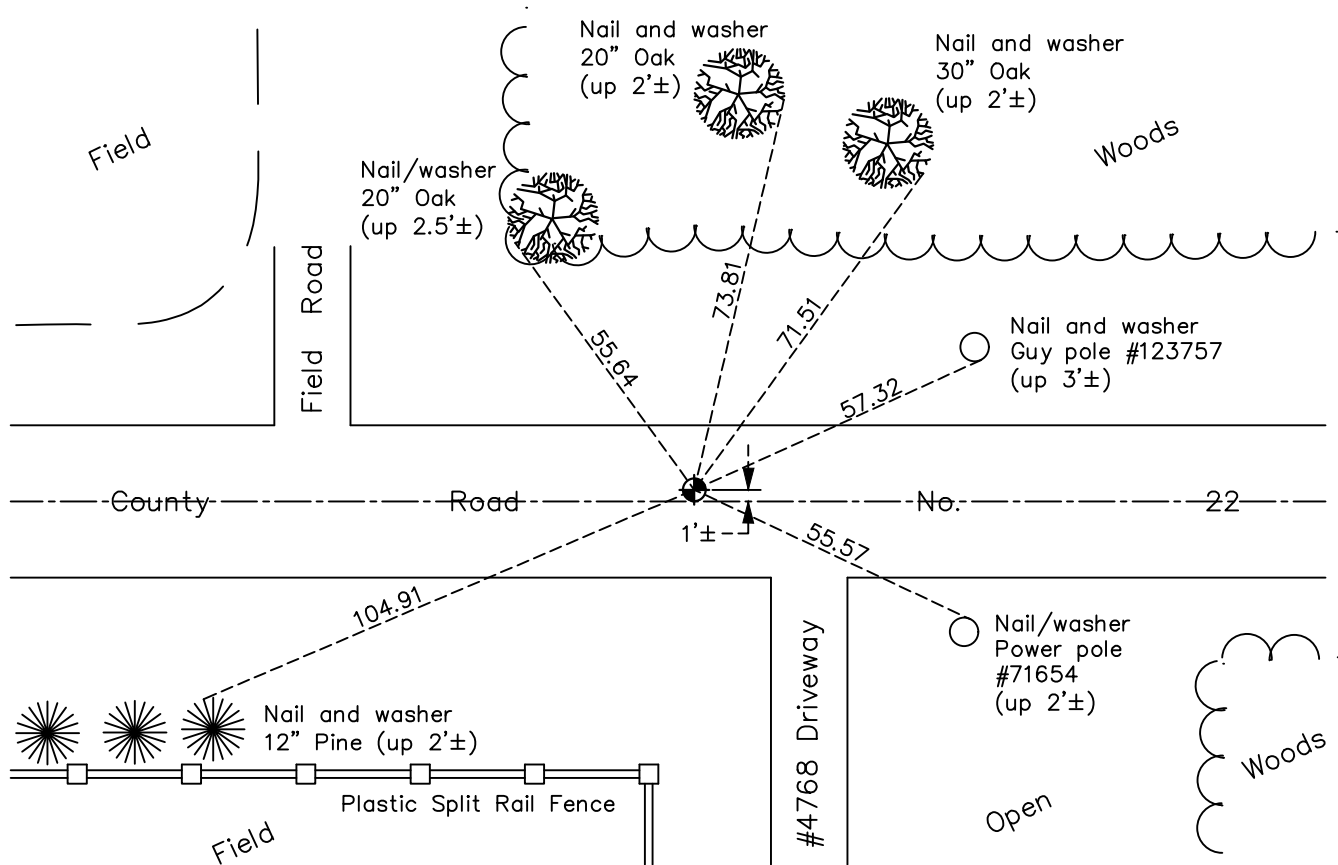
Northwest Corner of Sec. 30 Township 33 Range 24

On the 10th day of February, 1960, the described corner was evidenced by a concrete monument

and to perpetuate the location of said corner, at the exact location thereof, a permanent marker was placed consisting of a cast iron monument on top of the concrete monument

AND on the 10th day of December, 2020, said permanent marker was found flush and the ties were updated

Updated reference ties are as shown below.



Revision Date

06/11/2021

N.A.D. 1983 Coordinates
(1996 Adjustment)

County Project Coordinates	
Northing	<u>206656.3005</u>
Easting	<u>468643.9000</u>
Date	<u>2/15/01</u>

I hereby certify that this United States public land survey monument record is correct and complete to the best of my knowledge and belief.

David M Zieglmeier Date 7/30/21

David Zieglmeier Anoka County Surveyor
Minnesota License Number 46179

HISTORY OF GOVERNMENT CORNER

Page No. 102A

County of Anoka

State of Minnesota

Northwest Corner of Sec. 30 Township 33 Range 24

CORNER HISTORY:

May 1958 - Found concrete monument broken w/boat spike.

February 10, 1960 - Found concrete monument. Set a cast iron monument on top of concrete monument.
Updated ties.

June 27, 1985 - Found cast iron monument and updated ties.

August 29, 1988 - Found cast iron monument and updated ties.

May 27, 1997 - Found cast iron monument and updated ties.

February 15, 2001 - Found cast iron monument and updated ties. Established NAD 1983 (1996 adj.) Anoka County project coordinates by static GPS methods.

May 24, 2005 - Found cast iron monument, set construction ties and updated corner ties prior to construction.
Removed cast iron monument.

September 7, 2005 - Set cast iron monument on top of concrete monument using static GPS methods. Updated ties.

January 17, 2012 - Found cast iron monument. Verified position by VRS GPS methods. Updated ties.

May 18, 2017 - Found cast iron monument. Verified position by VRS GPS methods. Updated ties.

December 10, 2020 - Found cast iron monument flush. Verified position by VRS GPS methods. Updated ties.