

CERTIFICATE OF LOCATION OF GOVERNMENT CORNER

County of Anoka

State of Minnesota

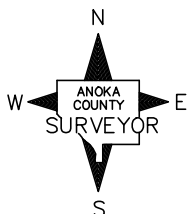
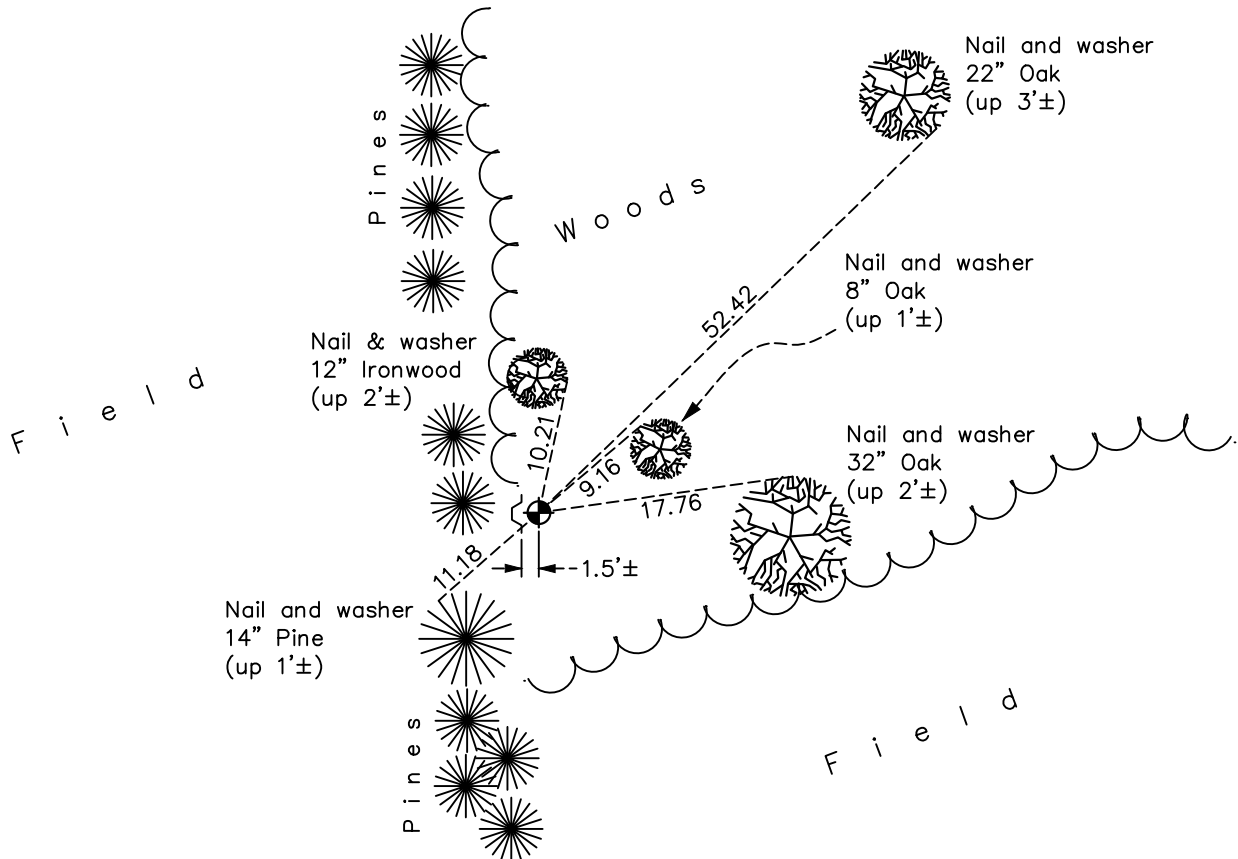
West 1/4 Corner of Sec. 30 Township 33 Range 24

On the 2nd day of October, 1963, the described corner was evidenced by a concrete monument

and to perpetuate the location of said corner, at the exact location thereof, a permanent marker was placed consisting of a cast iron monument with a sign and post on the west side

AND on the 22nd day of December, 2020, said permanent marker was found down 0.1'± and the ties were updated

Updated reference ties are as shown below.



Revision Date

06/11/2021

N.A.D. 1983 Coordinates
(1996 Adjustment)

County Project Coordinates	
Northing	<u>204022.8445</u>
Easting	<u>468655.0028</u>
Date	<u>3/12/02</u>

I hereby certify that this United States public land survey monument record is correct and complete to the best of my knowledge and belief.

David M Zieglmeier Date 7/30/21

David Zieglmeier Anoka County Surveyor
Minnesota License Number 46179

HISTORY OF GOVERNMENT CORNER

Page No. 102B

County of Anoka

State of Minnesota

West 1/4 Corner of Sec. 30 Township 33 Range 24

CORNER HISTORY:

October 2, 1963 - Found concrete monument and updated ties (replaced by a cast iron monument at unknown date).

August 17, 1965 - Found cast iron monument w/sign and post on the west side. Updated ties.

August 14, 1973 - Found cast iron monument w/sign and post on the west side. Updated ties.

July 28, 1976 - Found cast iron monument w/sign and post on the west side. Updated ties.

July 25, 1979 - Found cast iron monument w/sign and post on the west side. Updated ties.

August 9, 1982 - Found cast iron monument w/sign and post on the west side. Updated ties.

July 3, 1985 - Found cast iron monument w/sign and post on the west side. Updated ties.

July 6, 1989 - Found cast iron monument w/sign and post on the west side. Updated ties.

July 7, 1997 - Found cast iron monument w/sign and post on the west side. Updated ties.

March 12, 2002 - Found cast iron monument w/sign and post on the west side. Updated ties. Established NAD 1983 (1996 adj.) Anoka County project coordinates by static GPS methods.

January 24, 2012 - Found cast iron monument w/sign and post on the west side. Updated ties.

May 31, 2017 - Found cast iron monument down 0.1'± w/sign and post 1.5'± west of monument. Updated ties.

December 22, 2020 - Found cast iron monument down 0.1'± w/sign and post 1.5'± west of monument. Updated ties.