

CERTIFICATE OF LOCATION OF GOVERNMENT CORNER

County of Anoka

State of Minnesota

West 1/4 Corner of Sec. 29 Township 33 Range 24

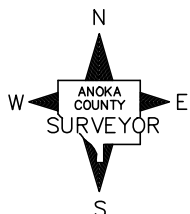
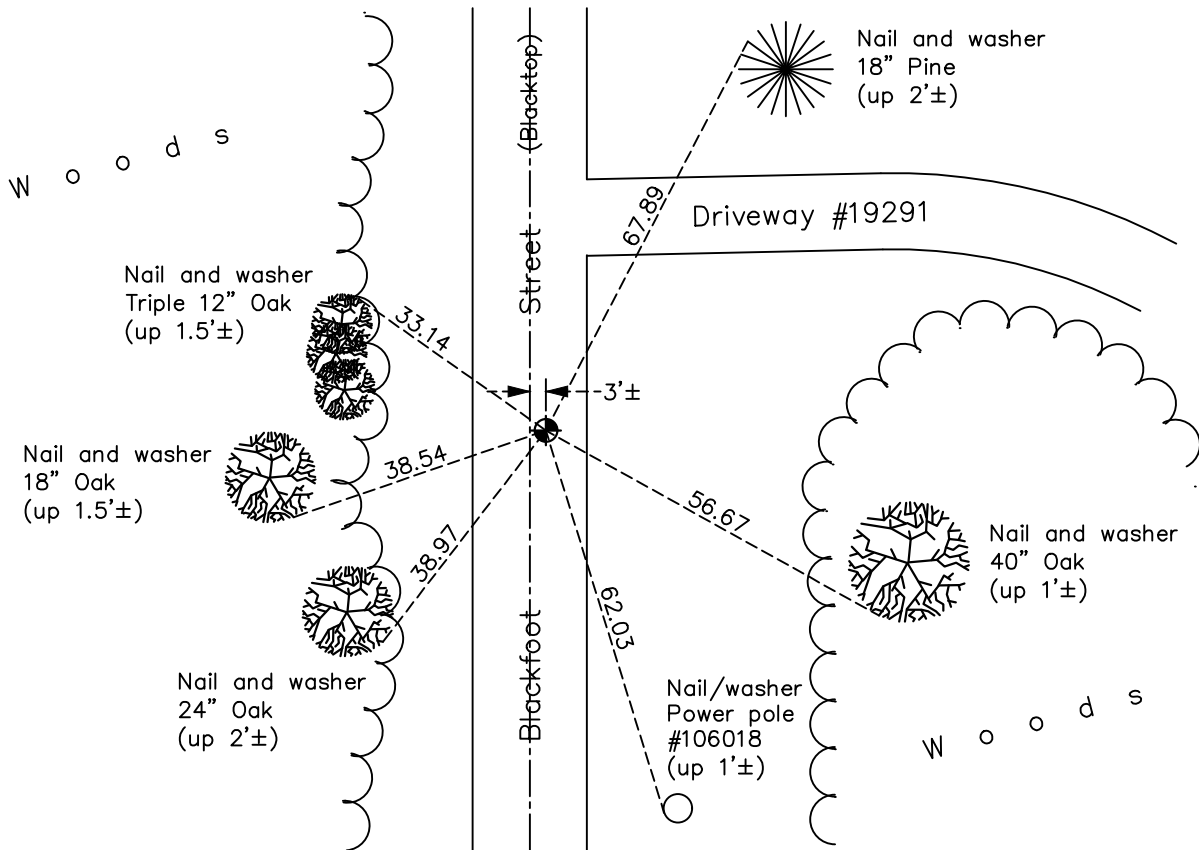
On the 10th day of November, 1965, the described corner was evidenced by an axle shaft
from N. C. Hoium ties

and to perpetuate the location of said corner, at the exact location thereof, a permanent marker
 was placed consisting of a cast iron monument

AND on the 11th day of December, 2020, said permanent marker was found flush to surface

The ties were updated

Updated reference ties are as shown below.



Revision Date

06/11/2021

N.A.D. 1983 Coordinates
(1996 Adjustment)

County Project Coordinates

Northing 203907.1574

Easting 473983.6968

Date 6/26/01

I hereby certify that this United States public
land survey monument record is correct and
complete to the best of my knowledge and belief.

David M Zieglmeier Date 7/30/21

David Zieglmeier Anoka County Surveyor

Minnesota License Number 46179

HISTORY OF GOVERNMENT CORNER

Page No. 103

County of Anoka

State of Minnesota

West 1/4 Corner of Sec. 29 Township 33 Range 24

CORNER HISTORY:

November 10, 1965 - Found axle shaft down 1.5'± using N.C. Hoium's ties. Updated ties.

July 2, 1968 - Found axle shaft and replaced with a cast iron monument down 0.5'±. Updated ties.

August 9, 1971 - Found cast iron monument and updated ties.

July 14, 1975 - Found cast iron monument and updated ties.

July 11, 1978 - Found cast iron monument and updated ties.

July 22, 1981 - Found cast iron monument and updated ties.

August 6, 1984 - Found cast iron monument and updated ties.

December 30, 1991 - Found cast iron monument and updated ties.

May 27, 1997 - Found cast iron monument and updated ties.

June 26, 2001 - Established NAD 1983 (1996 adj.) Anoka County project coordinates by static GPS methods.

April 4, 2012 - Found solid cast iron monument down 1.5'± under blacktop road and checked corner ties.

April 23, 2012 - Replaced solid cast iron monument with an extendible cast iron monument flush with the blacktop road. Checked position by VRS GPS methods.

April 24, 2012 - Found cast iron monument and verified position by static GPS methods.

May 1, 2012 - Found cast iron monument and moved 0.10' east and 0.04' south. Updated ties.

April 10, 2017 - Found cast iron monument flush. Verified position by VRS GPS methods. Updated ties.

September 27, 2017 - Set extendible cast iron monument flush using static GPS methods. Verified position by VRS GPS methods. Updated ties.

December 11, 2020 - Found cast iron monument flush. Verified position by VRS GPS methods. Updated ties.