

CERTIFICATE OF LOCATION OF GOVERNMENT CORNER

County of Anoka

State of Minnesota

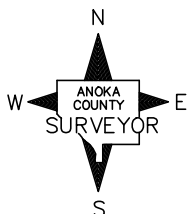
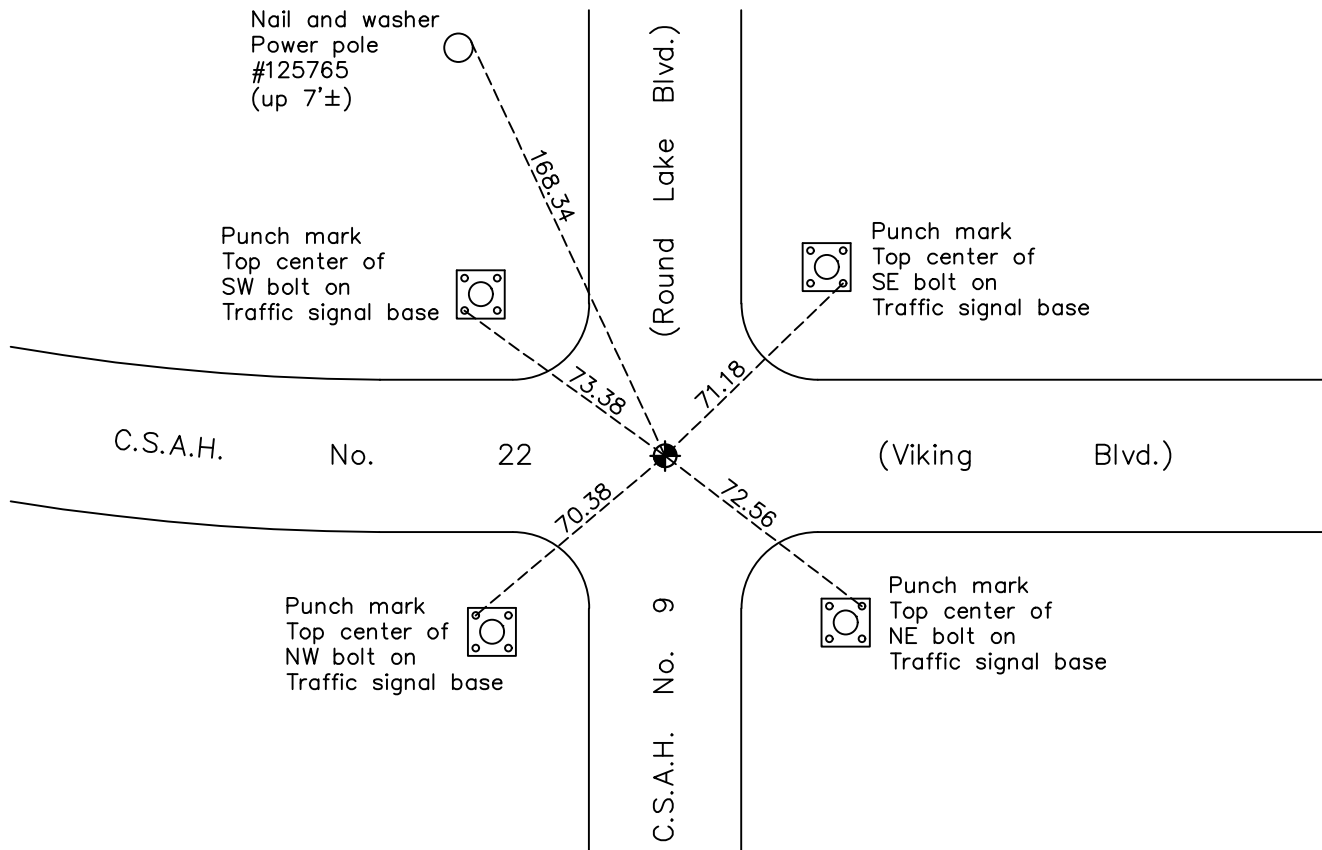
East 1/4 Corner of Sec. 29 Township 33 Range 24

On the 19th day of September, 1963, the described corner was evidenced by a 1/2" iron pipe from N. C. Hoium

and to perpetuate the location of said corner, at the exact location thereof, a permanent marker was placed consisting of a cast iron monument

AND on the 22nd day of December, 2020, said permanent marker was found and the ties were updated

Updated reference ties are as shown below.



Revision Date

06/24/2021

N.A.D. 1983 Coordinates
(1996 Adjustment)

| County Project Coordinates | |
|----------------------------|--------------------|
| Northing | <u>203825.6232</u> |
| Easting | <u>479229.0176</u> |
| Date | <u>2/15/01</u> |

I hereby certify that this United States public land survey monument record is correct and complete to the best of my knowledge and belief.

David M Zieglmeier Date 7/30/21

David Zieglmeier Anoka County Surveyor
Minnesota License Number 46179

HISTORY OF GOVERNMENT CORNER

Page No. 104

County of Anoka

State of Minnesota

East 1/4 Corner of Sec. 29 Township 33 Range 24

CORNER HISTORY:

Unknown date - Found granite and updated ties.

December 1961 - Could not find granite.

September 18, 1963 - N.C. Hoium found 1/2" rod and updated ties.

August 3, 1965 - Found 1/2" rod using N.C. Hoium ties. Replaced with cast iron monument flush. Updated ties.

June 28, 1968 - Found cast iron monument and updated ties.

July 23, 1971 - Found cast iron monument and updated ties.

July 11, 1975 - Found cast iron monument and updated ties.

July 11, 1978 - Found cast iron monument and updated ties.

July 21, 1981 - Found cast iron monument and updated ties.

August 3, 1984 - Found cast iron monument and updated ties.

July 16, 1987 - Found cast iron monument and updated ties.

December 30, 1991 - Found cast iron monument and updated ties.

June 5, 1997 - Found cast iron monument and updated ties.

February 15, 2001 - Found cast iron monument and updated ties. Established NAD 1983 (1996 adj.) Anoka County project coordinates by static GPS methods.

July 23, 2001 - Found cast iron monument, set construction ties and updated corner ties prior to construction. Removed top of monument (unknown date of top reset).

May 24, 2005 - Found cast iron monument, set construction ties and updated corner ties prior to construction. Removed monument (unknown date of reset).

December 8, 2010 - Found cast iron monument flush and updated ties.

March 1, 2012 - Found cast iron monument. Verified position by VRS GPS methods. Updated ties.

August 18, 2016 - Found cast iron monument, verified position by VRS GPS methods and updated corner ties prior to construction. Removed monument.

November 16, 2016 - Set cast iron monument after construction and updated ties.

April 10, 2017 - Found cast iron monument. Verified position by VRS GPS methods. Updated ties.

December 22, 2020 - Found cast iron monument. Verified position by VRS GPS methods. Updated ties.