

# CERTIFICATE OF LOCATION OF GOVERNMENT CORNER

County of Anoka

State of Minnesota

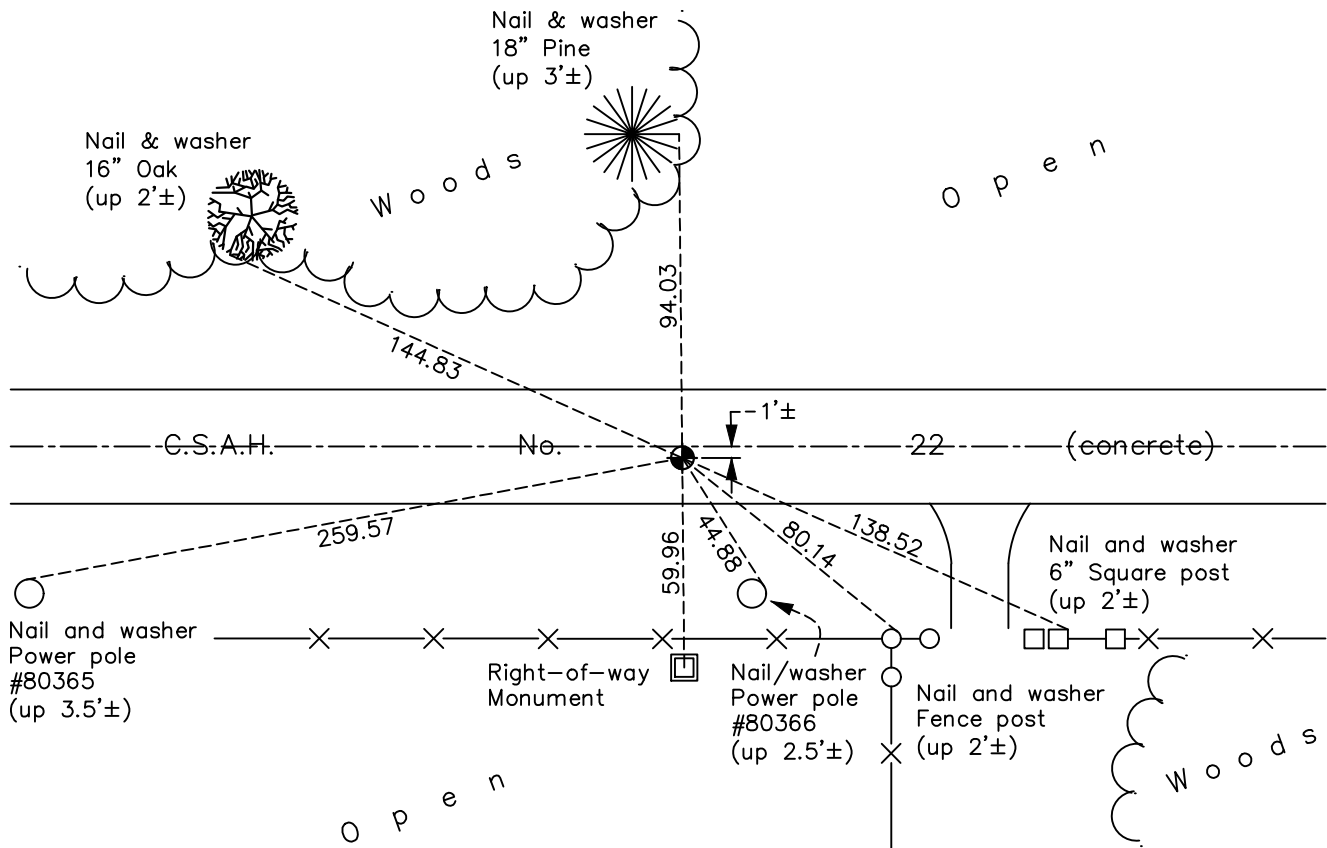
## West 1/4 Corner of Sec. 27 Township 33 Range 24

On the 14th day of September, 1967, the described corner was evidenced by area resurvey

and to perpetuate the location of said corner, at the exact location thereof, a permanent marker was placed consisting of a Slimline cast iron monument set in concrete

AND on the 22nd day of December, 2020, said permanent marker was found and the ties  
were updated

Updated reference ties are as shown below.



Revision Date

06/24/2021

N.A.D. 1983 Coordinates  
(1996 Adjustment)

County Project Coordinates	
Northing	<u>203701.5934</u>
Easting	<u>484499.7497</u>
Date	<u>2/27/01</u>

I hereby certify that this United States public land survey monument record is correct and complete to the best of my knowledge and belief.

*David M Zieglmeier* Date 7/30/21

David Zieglmeier Anoka County Surveyor  
 Minnesota License Number 46179

# HISTORY OF GOVERNMENT CORNER

Page No. 105

County of Anoka

State of Minnesota

## West 1/4 Corner of Sec. 27 Township 33 Range 24

### **CORNER HISTORY:**

September 14, 1967 - Set cast iron monument flush using area resurvey. Established ties to monument.

July 3, 1968 - Found cast iron monument and updated ties.

July 26, 1971 - Found cast iron monument and updated ties.

August 29, 1972 - Found cast iron monument down and raised flush.

July 11, 1975 - Found cast iron monument and updated ties.

July 11, 1978 - Found cast iron monument and updated ties.

July 21, 1981 - Found cast iron monument and updated ties.

August 6, 1984 - Found cast iron monument and updated ties.

April 4, 1990 - Found cast iron monument and updated ties prior to construction. Removed monument.

August 24, 1990 - Set cast iron monument flush after construction. Updated ties.

January 28, 1992 - Found cast iron monument and updated ties.

June 13, 1997 - Found cast iron monument and updated ties.

February 15, 2001 - Found cast iron monument and updated ties.

February 27, 2001 - Established NAD 1983 (1996 adj.) Anoka County project coordinates by static GPS methods.

March 2, 2012 - Found cast iron monument. Verified position by VRS GPS methods. Updated ties.

August 24, 2013 - Found cast iron monument, set construction ties, updated corner ties and verified position by VRS GPS methods prior to road construction. Removed monument.

November 18, 2013 - Set Slimline cast iron monument in concrete after road construction. Updated ties.

June 27, 2016 - Found Slimline cast iron monument. Verified position by VRS GPS methods. Updated ties.

December 22, 2020 - Found Slimline cast iron monument. Updated ties.