

CERTIFICATE OF LOCATION OF GOVERNMENT CORNER

County of Anoka

State of Minnesota

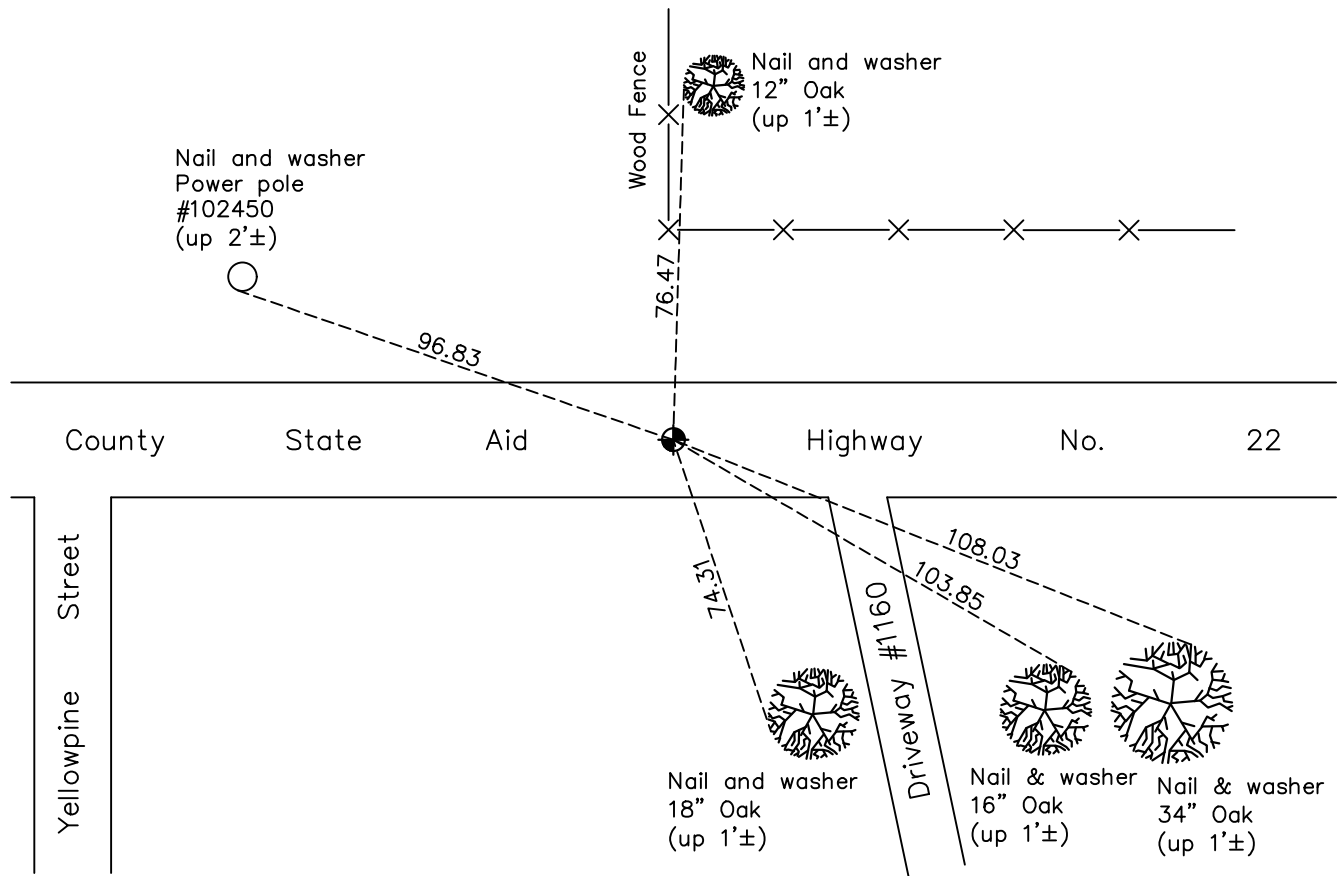
Center Corner of Sec. 26 Township 33 Range 24

On the 2nd day of August, 1988, the described corner was evidenced by 1/2" iron pipe
(checks with section survey)

and to perpetuate the location of said corner, at the exact location thereof, a permanent marker was placed consisting of a cast iron monument (no markings)

AND on the 14th day of December, 2020, said permanent marker was found flush and the
ties were updated. Checked position by static GPS methods.

Updated reference ties are as shown below.



Revision Date
9/17/2021

N.A.D. 1983 Coordinates
 (1996 Adjustment)

County Project Coordinates	
Northing	<u>203743.3530</u>
Easting	<u>492403.8190</u>
Date	<u>8/5/15</u>

I hereby certify that this United States public land survey monument record is correct and complete to the best of my knowledge and belief.
David Zieglmeier Date 3/29/24
 David Zieglmeier Anoka County Surveyor
 Minnesota License Number 46179

HISTORY OF GOVERNMENT CORNER

Page No. 107A

County of Anoka

State of Minnesota

Center Corner of Sec. 26 Township 33 Range 24

CORNER HISTORY:

August 2, 1988 - Found 1/2" iron pipe that checks out using area resurvey. Updated ties.

August 24, 1990 - Replaced 1/2" iron pipe with a cast iron monument flush on centerline. Updated ties.

July 8, 1992 - Found cast iron monument and updated ties.

July 2, 1997 - Found cast iron monument and updated ties.

April 30, 2015 - Found cast iron monument, set construction ties, updated corner ties and verified position by VRS GPS methods prior to road construction. Removed monument.

August 5, 2015 - Reset cast iron monument (w/markings ground off) using static GPS methods. Verified position by VRS GPS methods. Updated ties.

December 14, 2020 - Found cast iron monument flush. Verified position by VRS GPS and static GPS methods. Updated ties.