

# CERTIFICATE OF LOCATION OF GOVERNMENT CORNER

County of Anoka

State of Minnesota

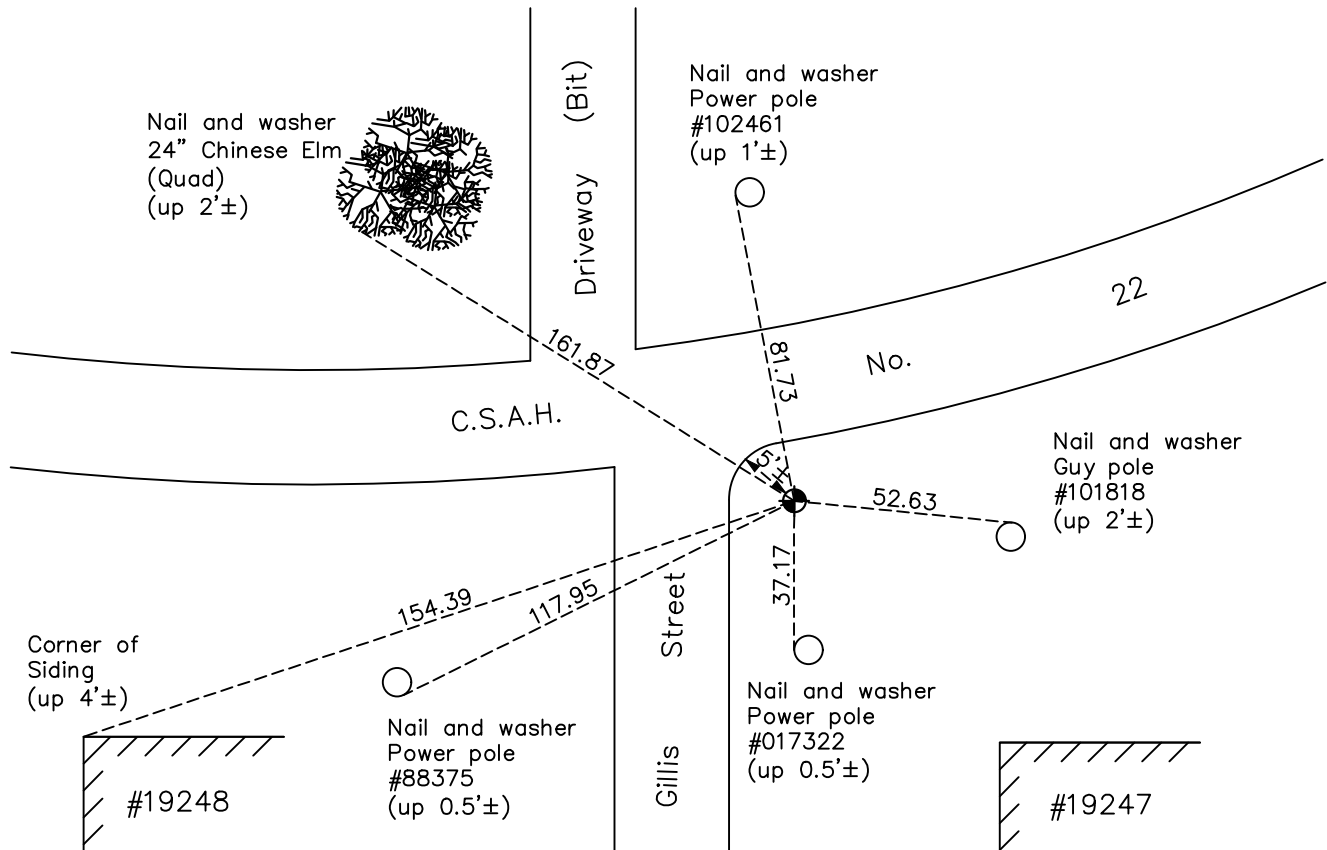
## East 1/4 Corner of Sec. 26 Township 33 Range 24

On the 28th day of May, 1968, the described corner was evidenced by a concrete monument

and to perpetuate the location of said corner, at the exact location thereof, a permanent marker was placed consisting of a cast iron monument

AND on the 9th day of December, 2020, said permanent marker was found down 0.5'± and the ties were updated.

Updated reference ties are as shown below.



Revision Date

06/24/2021

N.A.D. 1983 Coordinates  
(1996 Adjustment)

County Project Coordinates	
Northing	<u>203758.1997</u>
Easting	<u>495022.3138</u>
Date	<u>6/11/01</u>

I hereby certify that this United States public land survey monument record is correct and complete to the best of my knowledge and belief.

*David M Zieglmeier* Date 7/30/21

David Zieglmeier Anoka County Surveyor  
Minnesota License Number 46179

# HISTORY OF GOVERNMENT CORNER

Page No. 108

County of Anoka

State of Minnesota

## East 1/4 Corner of Sec. 26 Township 33 Range 24

### **CORNER HISTORY:**

May 28, 1968 - Found concrete monument using area platting and lowered monument 30". Set a 1/2" iron pipe over top center and updated the ties.

August 26, 1970 - Found 1/2" iron pipe and replaced with a cast iron monument flush over concrete monument. Updated ties.

July 22, 1971 - Found cast iron monument and updated ties.

August 28, 1972 - Found cast iron monument down and raised flush.

July 2, 1975 - Found cast iron monument and updated ties.

July 11, 1978 - Found cast iron monument and updated ties.

July 21, 1981 - Found cast iron monument and updated ties.

August 6, 1984 - Found cast iron monument and updated ties.

July 16, 1987 - Found cast iron monument and updated ties.

July 6, 1989 - Found cast iron monument and updated ties prior to construction.

April 4, 1990 - Found cast iron monument and updated ties prior to construction.

August 7, 1990 - Set cast iron monument flush after construction. Updated ties.

January 28, 1992 - Found cast iron monument and updated ties.

May 30, 1997 - Found cast iron monument and updated ties.

June 11, 2001 - Found cast iron monument and updated ties. Established NAD 1983 (1996 adj.) Anoka County project coordinates by static GPS methods.

October 10, 2011 - Found cast iron monument down 0.5'±. Verified position by VRS GPS methods. Updated ties.

April 30, 2015 - Found cast iron monument down 0.5'±. Verified position by VRS GPS methods. Updated ties. Added sign and post on the south side and marked up due to nearby construction.

March 30, 2017 - Found cast iron monument down 0.5'±. Verified position by VRS GPS methods. Updated ties.

December 9, 2020 - Found cast iron monument down 0.5'±. Verified position by VRS GPS methods. Updated ties.