

CERTIFICATE OF LOCATION OF GOVERNMENT CORNER

County of Anoka

State of Minnesota

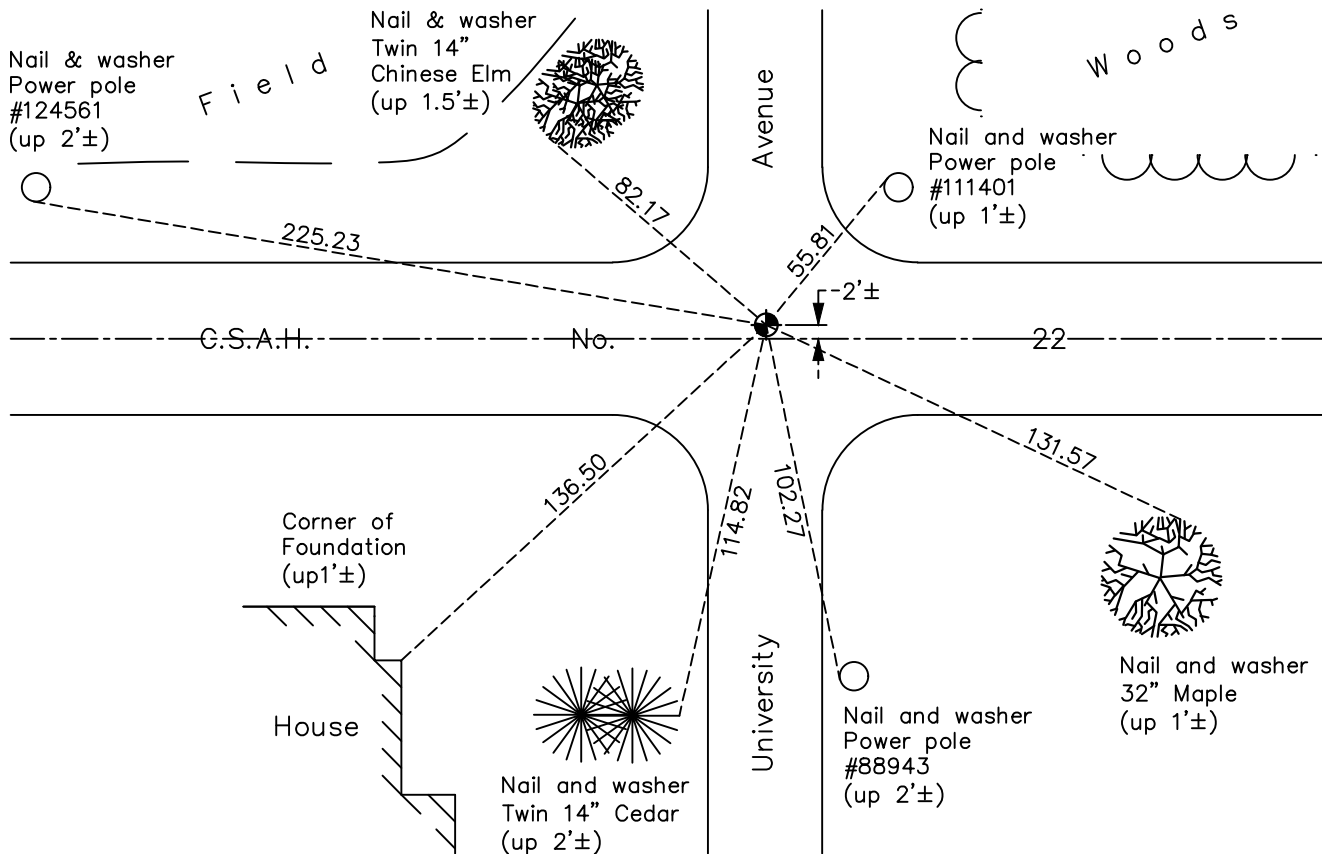
East 1/4 Corner of Sec. 25 Township 33 Range 24

On the 15th day of July, 1960, the described corner was evidenced by a 2" iron pipe

and to perpetuate the location of said corner, at the exact location thereof, a permanent marker was placed consisting of a cast iron monument

AND on the 28th day of December, 2020, said permanent marker was found flush and the ties were updated.

Updated reference ties are as shown below.



Revision Date

06/24/2021

N.A.D. 1983 Coordinates
(1996 Adjustment)

County Project Coordinates	
Northing	203798.5864
Easting	500248.8681
Date	6/11/01

I hereby certify that this United States public land survey monument record is correct and complete to the best of my knowledge and belief.

David M Zieglmeier Date 7/30/21

David Zieglmeier Anoka County Surveyor
Minnesota License Number 46179

HISTORY OF GOVERNMENT CORNER

Page No. 109

County of Anoka

State of Minnesota

East 1/4 Corner of Sec. 25 Township 33 Range 24

CORNER HISTORY:

July 15, 1960 - Found 2" iron pipe down 1'± and updated ties.

June 9, 1965 - Found 2" iron pipe and added additional ties.

July 2, 1968 - Found 2" iron pipe and replaced with a cast iron monument flush. Updated ties.

July 23, 1971 - Found cast iron monument and updated ties.

August 21, 1973 - Found cast iron monument down and raised flush. Updated ties.

July 14, 1975 - Found cast iron monument and updated ties.

July 11, 1978 - Found cast iron monument and updated ties.

July 17, 1981 - Found cast iron monument and updated ties.

August 6, 1984 - Found cast iron monument and updated ties.

June 29, 1992 - Found cast iron monument and updated ties.

June 4, 1997 - Found cast iron monument and updated ties.

June 20, 2000 - Found cast iron monument and updated ties.

June 11, 2001 - Established NAD 1983 (1996 adj.) Anoka County project coordinates by static GPS methods.

February 10, 2012 - Found cast iron monument. Verified position by VRS GPS methods. Updated ties.

April 30, 2015 - Found cast iron monument, set construction ties, updated corner ties and verified position by VRS GPS methods prior to construction. Removed monument.

August 5, 2015 - Set cast iron monument after construction using static GPS methods. Verified position by VRS GPS methods. Updated ties.

March 30, 2017 - Found cast iron monument. Verified position by VRS GPS methods. Updated ties.

December 28, 2020 - Found cast iron monument flush. Verified position by VRS GPS methods. Updated ties.