

CERTIFICATE OF LOCATION OF GOVERNMENT CORNER

County of Anoka

State of Minnesota

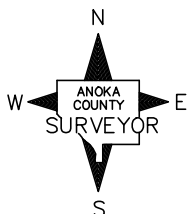
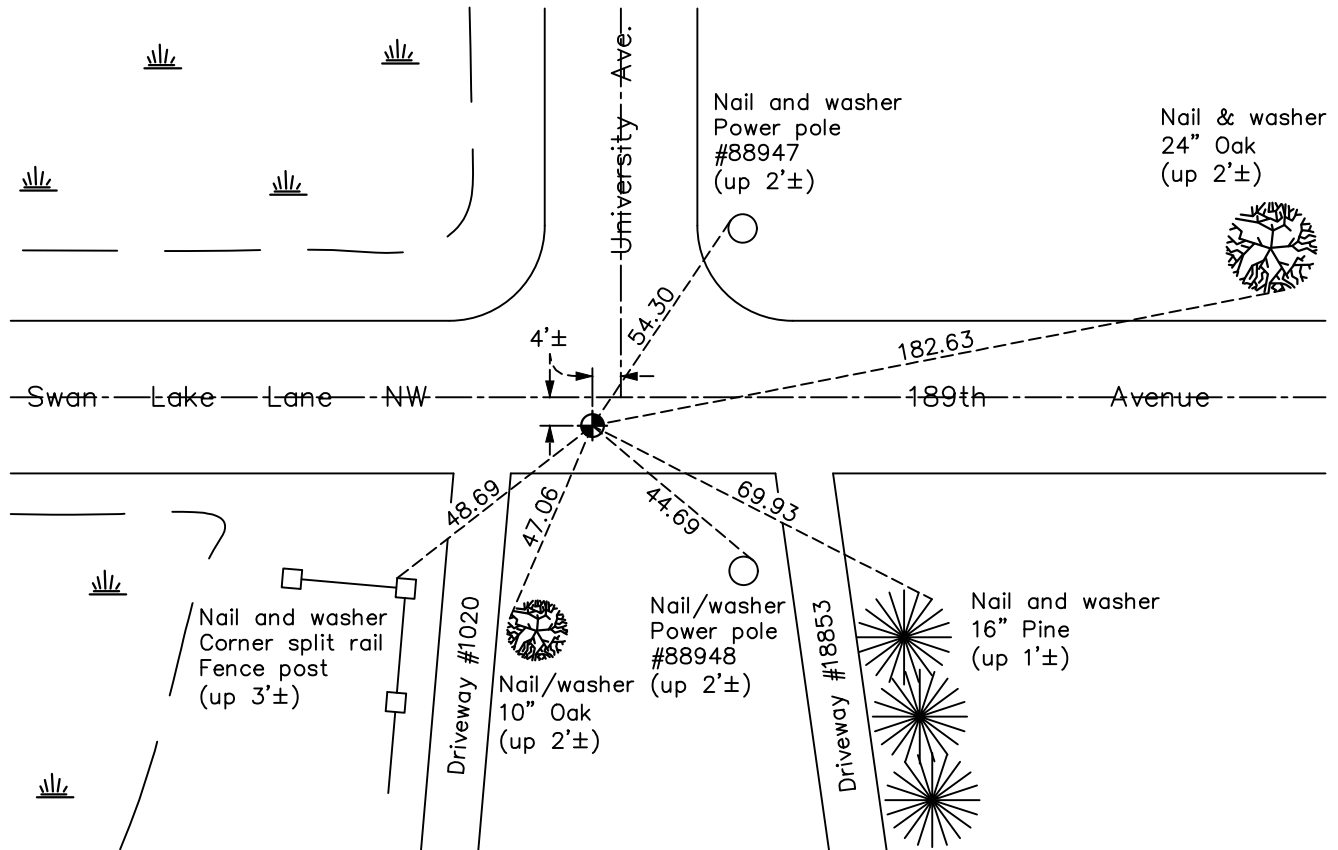
Southeast Corner of Sec. 25 Township 33 Range 24

On the 30th day of August, 1971, the described corner was evidenced by area resurvey

and to perpetuate the location of said corner, at the exact location thereof, a permanent marker was placed consisting of a cast iron monument with the top one-half of a cast iron monument set on top of it

AND on the 24th day of November, 2020, said permanent marker was found flush and the ties were updated

Updated reference ties are as shown below.



Revision Date

06/24/2021

N.A.D. 1983 Coordinates
(1996 Adjustment)

County Project Coordinates	
Northing	<u>201152.5535</u>
Easting	<u>500262.8772</u>
Date	<u>7/24/01</u>

I hereby certify that this United States public land survey monument record is correct and complete to the best of my knowledge and belief.

David M Zieglmeier Date 7/30/21

David Zieglmeier Anoka County Surveyor
Minnesota License Number 46179

HISTORY OF GOVERNMENT CORNER

Page No. 110

County of Anoka

State of Minnesota

Southeast Corner of Sec. 25 Township 33 Range 24

CORNER HISTORY:

August 30, 1971 - Set cast iron monument flush using area resurvey. Established ties to monument.

July 14, 1975 - Found cast iron monument and updated ties.

July 11, 1978 - Found cast iron monument and updated ties.

July 11, 1981 - Found cast iron monument and updated ties.

August 6, 1984 - Found cast iron monument and updated ties.

July 22, 1987 - Found cast iron monument and updated ties.

July 15, 1992 - Found cast iron monument and updated ties.

July 2, 1997 - Found cast iron monument and updated ties.

June 20, 2000 - Found cast iron monument and updated ties.

July 24, 2001 - Found cast iron monument and updated ties. Established NAD 1983 (1996 adj.) Anoka County project coordinates by static GPS methods.

October 28, 2014 - Found 1/2" iron pipe on top of cast iron monument. Replaced 1/2" iron pipe with a 1/2 partial cast iron monument on top of full cast iron monument. Verified position by VRS GPS methods. Updated ties.

March 28, 2017 - Found cast iron monument. Verified position by VRS GPS methods. Updated ties.

November 24, 2020 - Found cast iron monument flush. Updated ties.