

CERTIFICATE OF LOCATION OF GOVERNMENT CORNER

County of Anoka

State of Minnesota

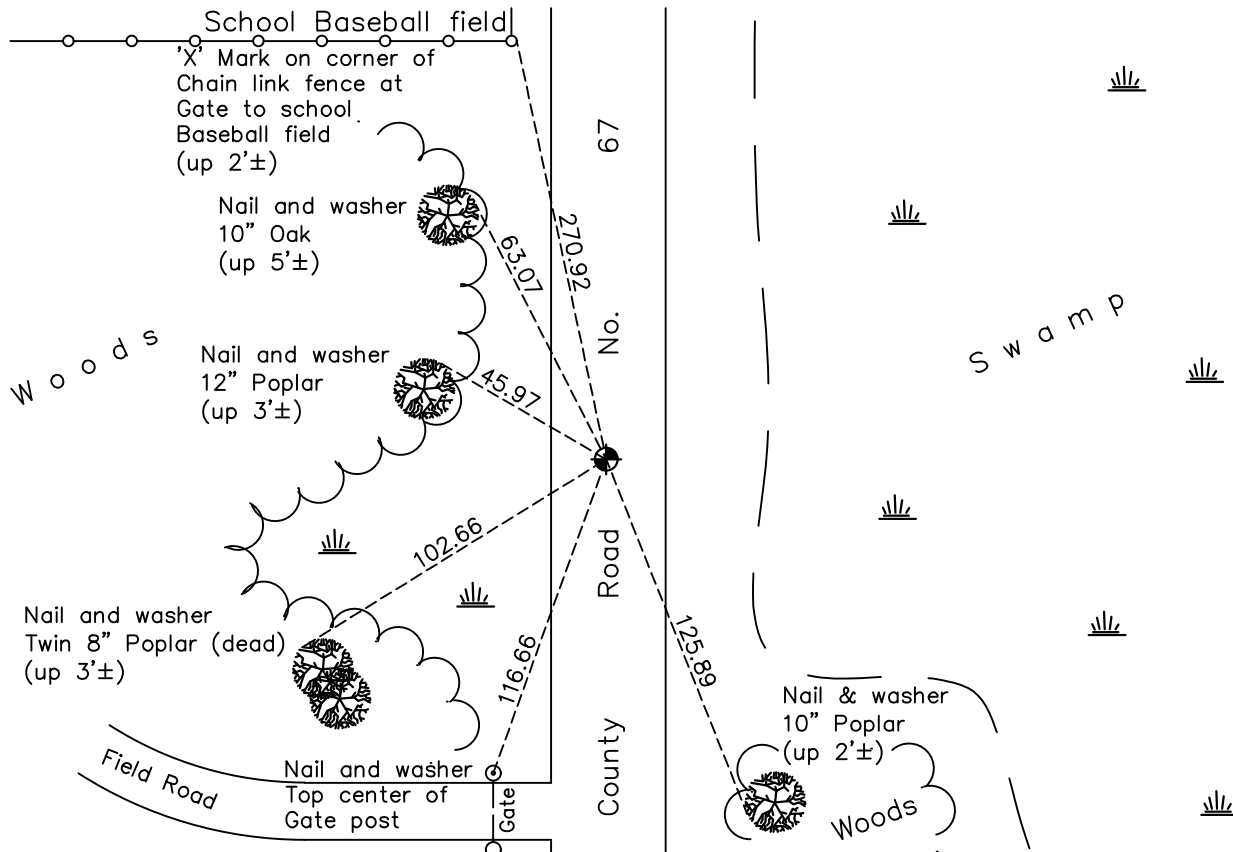
Northeast Corner of Sec. 35 Township 33 Range 24

On the 5th day of November, 1965, the described corner was evidenced by a 1/2" iron pipe

and to perpetuate the location of said corner, at the exact location thereof, a permanent marker was placed consisting of a cast iron monument

AND on the 16th day of December, 2020, said permanent marker was found flush and the ties were updated

Updated reference ties are as shown below.



Revision Date

06/24/2021

N.A.D. 1983 Coordinates
(1996 Adjustment)

County Project Coordinates	
Northing	<u>201119.5717</u>
Easting	<u>495036.9958</u>
Date	<u>6/14/01</u>

I hereby certify that this United States public land survey monument record is correct and complete to the best of my knowledge and belief.

David M Zieglmeier Date 7/30/21

David M. Zieglmeier, Anoka County Deputy Surveyor
Minnesota License Number 46179

HISTORY OF GOVERNMENT CORNER

Page No. 112

County of Anoka

State of Minnesota

Northeast Corner of Sec. 35 Township 33 Range 24

CORNER HISTORY:

June 11, 1934 - Anoka County Highway Department found a granite monument in center line road. No ties available.

November 5, 1965 - Found 1/2" iron pipe in center line road using F.C. Jackson information. Updated ties.

July 5, 1968 - Found 1/2" iron pipe and replaced with a cast iron monument. Updated ties.

July 22, 1971 - Found cast iron monument and updated ties.

July 14, 1975 - Found cast iron monument and updated ties.

July 13, 1978 - Found cast iron monument and updated ties.

July 21, 1981 - Found cast iron monument and updated ties.

August 6, 1984 - Found cast iron monument and updated ties.

January 28, 1992 - Found cast iron monument and updated ties.

May 29, 1997 - Found cast iron monument and updated ties.

June 14, 2001 - Established NAD 1983 (1996 adj.) Anoka County project coordinates by static GPS methods.

May 10, 2011 - Found cast iron monument broken. Replaced with a new cast iron monument and checked corner ties. Left monument top loosened for road overlay.

March 29, 2012 - Found cast iron monument down and raised flush after road overlay. Verified position by VRS GPS methods. Updated ties.

March 28, 2017 - Found cast iron monument. Verified position by VRS GPS methods. Updated ties.

December 16, 2020 - Found cast iron monument flush. Verified position by VRS GPS methods. Updated ties.