

CERTIFICATE OF LOCATION OF GOVERNMENT CORNER

County of Anoka

State of Minnesota

Witness Corner of Sec. 26 Township 33 Range 24

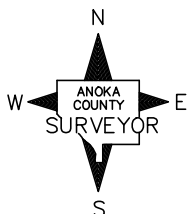
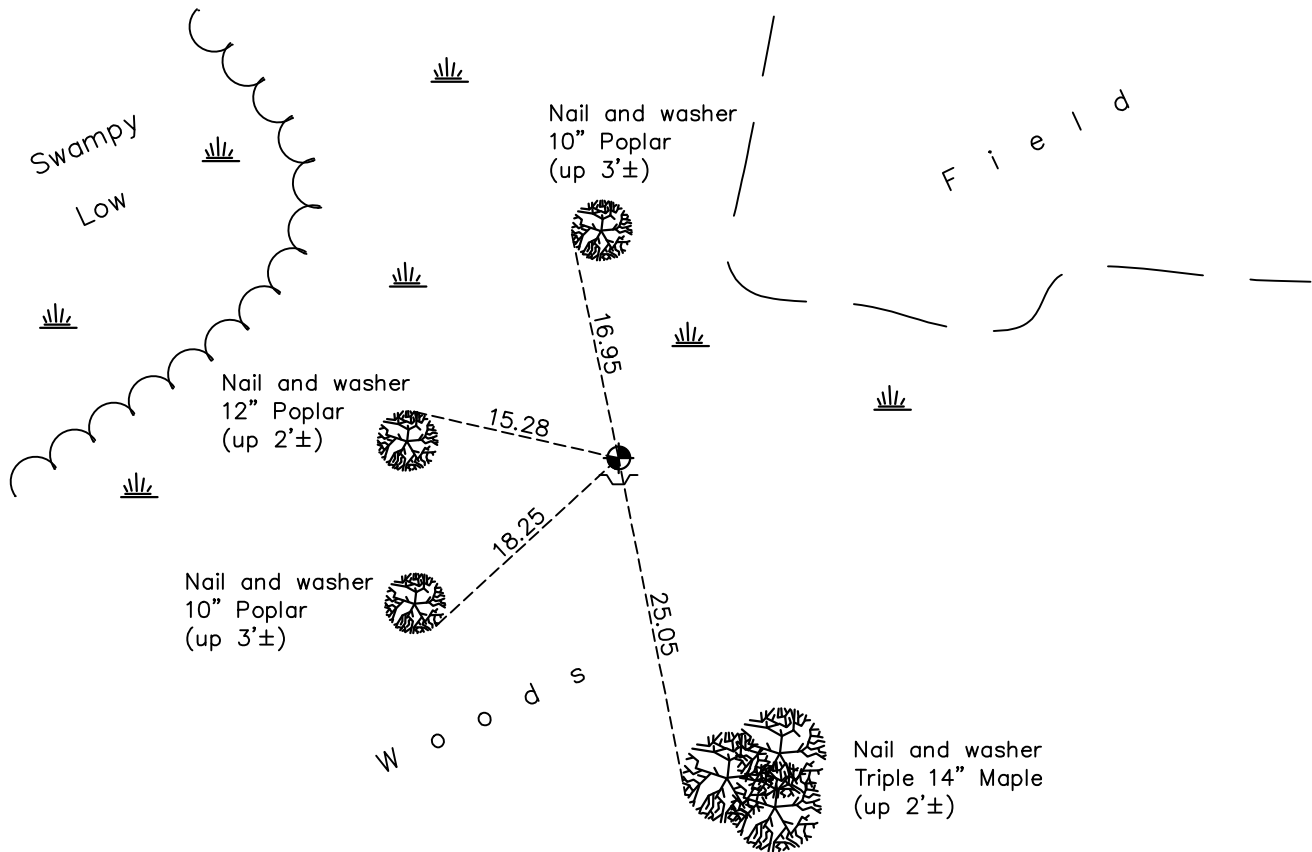
(on south line of SE 1/4)

On the 19th day of May, 1976, the described corner was evidenced by area resurvey

and to perpetuate the location of said corner, at the exact location thereof, a permanent marker was placed consisting of a cast iron monument with a sign and post on the south side

AND on the 17th day of December, 2020, said permanent marker was found up 0.1'± and the ties were updated

Updated reference ties are as shown below.



Revision Date

06/24/2021

N.A.D. 1983 Coordinates
(1996 Adjustment)

County Project Coordinates	
Northing	<u>201110.9990</u>
Easting	<u>493236.7001</u>
Date	<u>3/07/02</u>

I hereby certify that this United States public land survey monument record is correct and complete to the best of my knowledge and belief.

David M Zieglmeier Date 7/30/21

David M. Zieglmeier, Anoka County Deputy Surveyor
Minnesota License Number 46179

HISTORY OF GOVERNMENT CORNER

Page No. 113A

County of Anoka

State of Minnesota

Witness Corner of Sec. 26 Township 33 Range 24
(on south line of SE 1/4)

CORNER HISTORY:

May 19, 1976 - Set cast iron monument flush using area resurvey. Established ties to monument. Set sign and post on the south side.

August 4, 1978 - Found cast iron monument and updated ties.

July 28, 1981 - Found cast iron monument and updated ties.

August 17, 1984 - Found cast iron monument and updated ties.

July 31, 1987 - Found cast iron monument and updated ties.

July 8, 1997 - Found cast iron monument and updated ties.

March 7, 2002 - Established NAD 1983 (1996 adj.) Anoka County project coordinates by static GPS methods.

February 16, 2012 - Found cast iron monument and updated ties.

March 30, 2017 - Found cast iron monument and updated ties.

December 17, 2020 - Found cast iron monument up 0.1'±. and updated ties.