

# CERTIFICATE OF LOCATION OF GOVERNMENT CORNER

County of Anoka

State of Minnesota

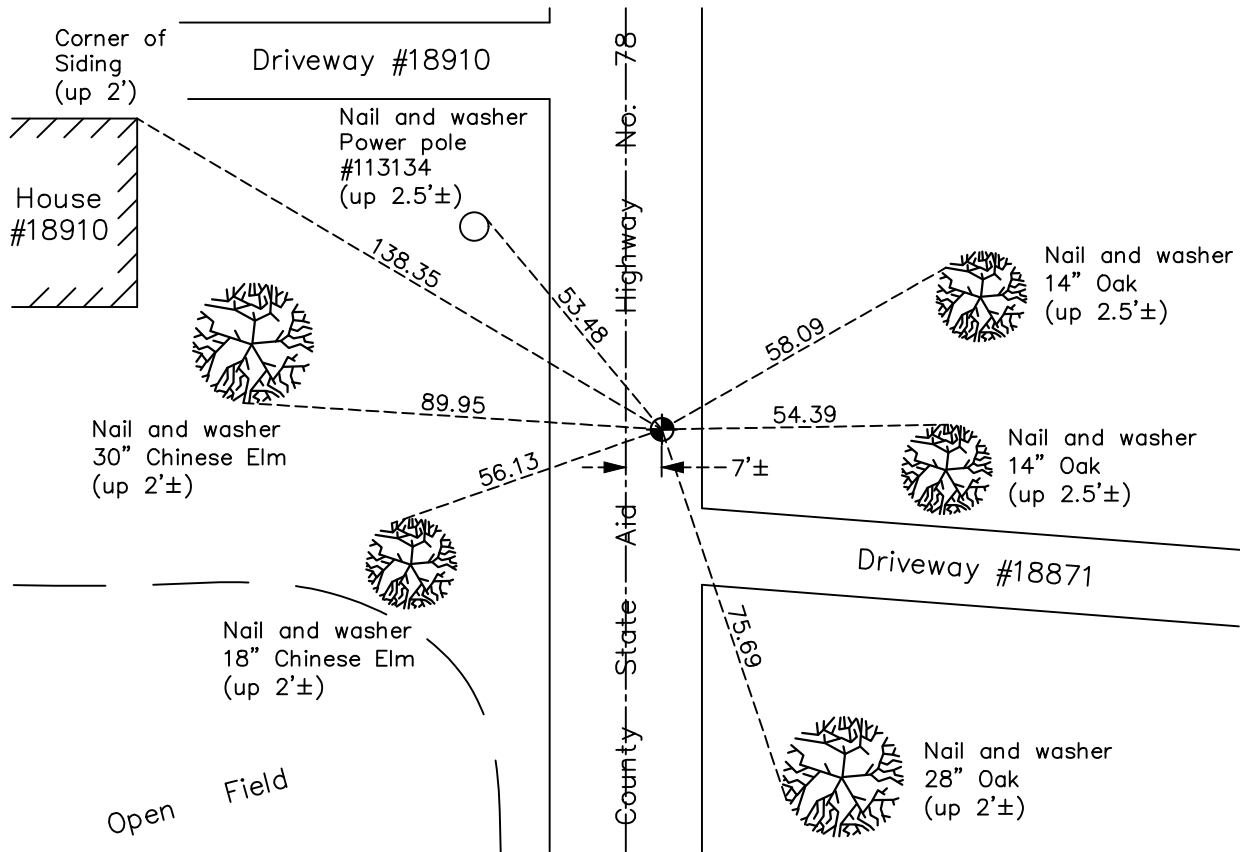
## Southeast Corner of Sec. 27 Township 33 Range 24

On the 8th day of September, 1967, the described corner was evidenced by area resurvey

and to perpetuate the location of said corner, at the exact location thereof, a permanent marker was placed consisting of a cast iron monument

AND on the 17th day of December, 2020, said permanent marker was found flush and the ties were updated

Updated reference ties are as shown below.



Revision Date

06/24/2021

N.A.D. 1983 Coordinates  
(1996 Adjustment)

County Project Coordinates

Northing 201094.9711

Easting 489827.1524

Date 2/27/01

I hereby certify that this United States public land survey monument record is correct and complete to the best of my knowledge and belief.

*David M Zieglmeier* Date 7/30/21

David Zieglmeier Anoka County Surveyor

Minnesota License Number 46179

# HISTORY OF GOVERNMENT CORNER

Page No. 114

County of Anoka

State of Minnesota

## Southeast Corner of Sec. 27 Township 33 Range 24

### **CORNER HISTORY:**

September 8, 1967 - Set cast iron monument down 0.5'± using area resurvey. Established ties to monument.

July 3, 1968 - Found cast iron monument and updated ties.

July 26, 1971 - Found cast iron monument and updated ties.

July 14, 1975 - Found cast iron monument and updated ties.

July 13, 1978 - Found cast iron monument and updated ties.

November 15, 1978 - Reset cast monument flush with blacktop and updated ties.

July 21, 1981 - Found cast iron monument and updated ties.

August 9, 1984 - Found cast iron monument and updated ties.

July 17, 1987 - Found cast iron monument and updated ties.

December 31, 1991 - Found cast iron monument and updated ties.

May 28, 1997 - Found cast iron monument and updated ties.

February 27, 2001 - Found cast iron monument and updated ties. Established NAD 1983 (1996 adj.) Anoka County project coordinates by static GPS methods.

March 2, 2012 - Found cast iron monument. Verified position by VRS GPS methods. Updated ties.

June 16, 2015 - Reset cast iron monument after road construction using static GPS methods. Updated ties.

March 28, 2017 - Found cast iron monument. Verified position by VRS GPS methods. Updated ties.

December 17, 2020 - Found cast iron monument flush. Updated ties.