

# CERTIFICATE OF LOCATION OF GOVERNMENT CORNER

County of Anoka

State of Minnesota

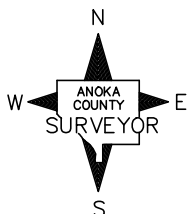
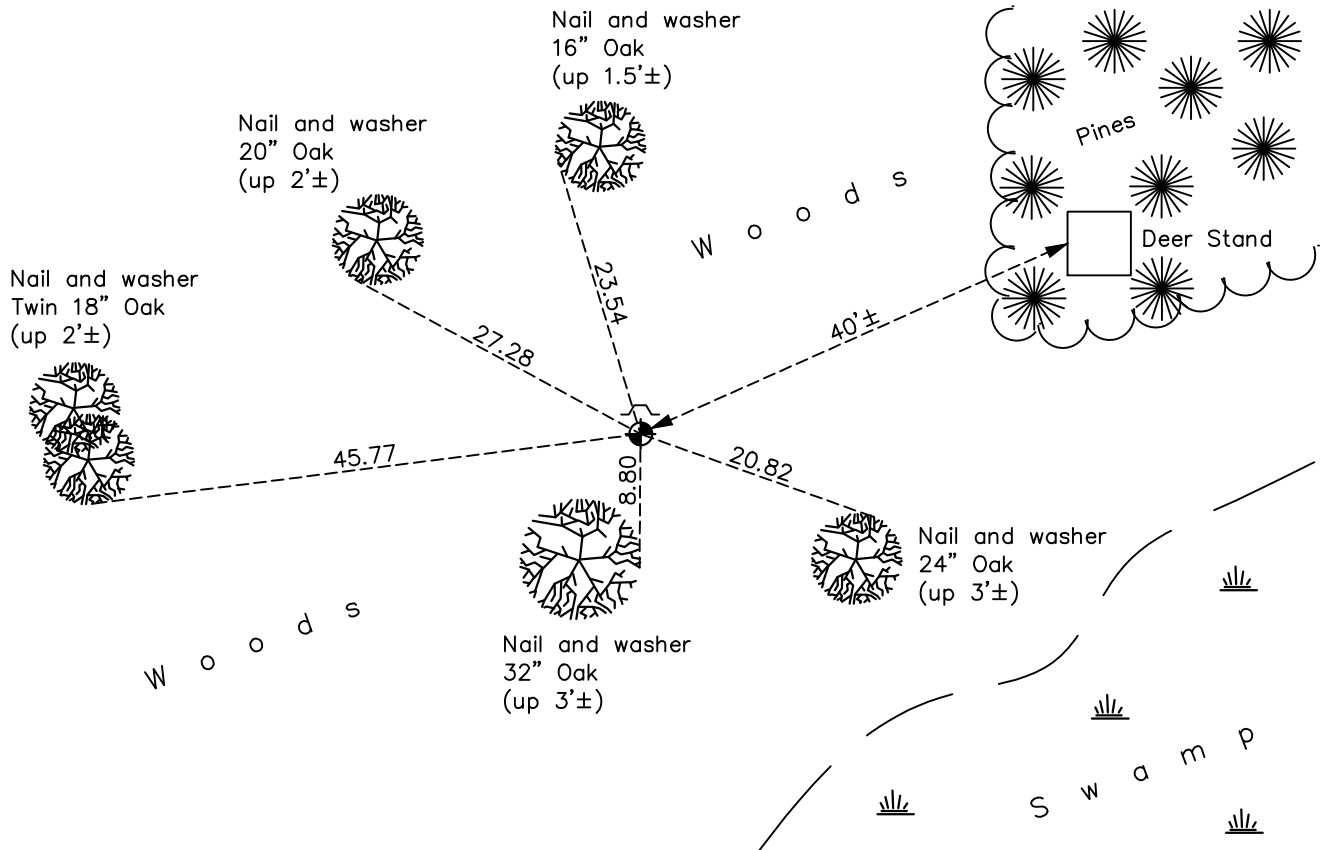
## North 1/4 Corner of Sec. 34 Township 33 Range 24

On the 3rd day of May, 1977, the described corner was evidenced by a 1/2" iron pipe

and to perpetuate the location of said corner, at the exact location thereof, a permanent marker was placed consisting of a cast iron monument with a sign and post on the north side

AND on the 29th day of December, 2020, said permanent marker was found flush and the ties were updated

Updated reference ties are as shown below.



Revision Date

06/24/2021

N.A.D. 1983 Coordinates  
(1996 Adjustment)

County Project Coordinates	
Northing	<u>201083.8718</u>
Easting	<u>487171.5512</u>
Date	<u>3/13/02</u>

I hereby certify that this United States public land survey monument record is correct and complete to the best of my knowledge and belief.

*David M Zieglmeier* Date 7/30/21

David Zieglmeier Anoka County Surveyor  
Minnesota License Number 46179

# HISTORY OF GOVERNMENT CORNER

Page No. 115

County of Anoka

State of Minnesota

## North 1/4 Corner of Sec. 34 Township 33 Range 24

### **CORNER HISTORY:**

May 3, 1977 - Found 1/2" iron pipe set by L. Winner and replaced with a cast iron monument flush. Updated ties. Set sign and post on the north side.

July 13, 1978 - Found cast iron monument and updated ties.

July 31, 1981 - Found cast iron monument and updated ties.

August 16, 1984 - Found cast iron monument and updated ties.

July 31, 1987 - Found cast iron monument and updated ties.

May 4, 1993 - Found cast iron monument and updated ties.

July 9, 1997 - Found cast iron monument and updated ties.

March 13, 2002 - Established NAD 1983 (1996 adj.) Anoka County project coordinates by static GPS methods.

February 22, 2012 - Found cast iron monument and updated ties.

April 4, 2017 - Found cast iron monument flush and updated ties.

December 29, 2020 - Found cast iron monument flush. Verified position by VRS GPS methods, and updated ties.