

# CERTIFICATE OF LOCATION OF GOVERNMENT CORNER

County of Anoka

State of Minnesota

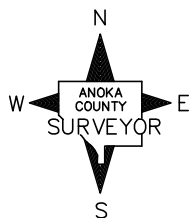
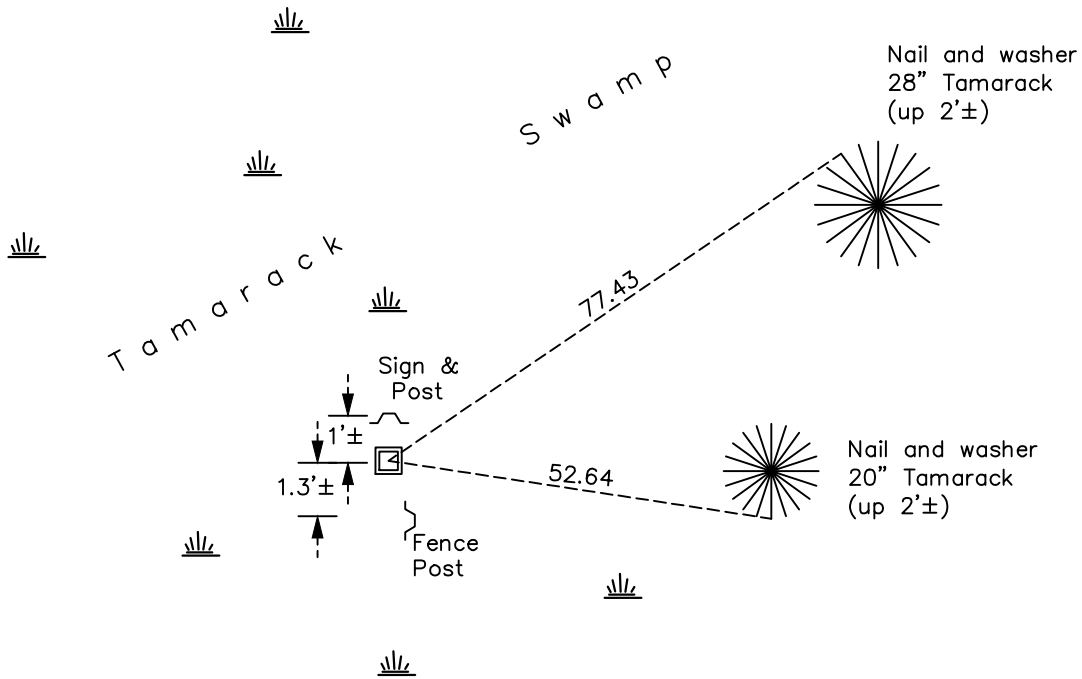
## South 1/4 Corner of Sec. 28 Township 33 Range 24

On the 1st day of February, 2024, the described corner was evidenced by a red & white iron pipe

and to perpetuate the location of said corner, at the exact location thereof, a permanent marker was placed consisting of a 2"x 2"x 6' Telspar w/ aluminum cap and punch mark set up 0.5'± in same location replacing found iron pipe laying down in ground, which was removed.

AND on the 1st day of February, 2024, said permanent marker was measured with RTK GPS method to verify location and ties were updated after setting.

Updated reference ties are as shown below.



Revision Date  
3/25/2024

N.A.D. 1983 Coordinates  
 (1996 Adjustment)

County Project Coordinates	
Northing	<u>201137.9671</u>
Easting	<u>481880.0363</u>
Date	<u>2/26/02</u>

I hereby certify that this United States public land survey monument record is correct and complete to the best of my knowledge and belief.

David Zieglmeier Date 3/28/24

David Zieglmeier Anoka County Surveyor  
 Minnesota License Number 46179

# HISTORY OF GOVERNMENT CORNER

Page No. 117

County of Anoka

State of Minnesota

## South 1/4 Corner of Sec. 28 Township 33 Range 24

### **CORNER HISTORY:**

May 1855 - This corner was established by James M. Marsh, Deputy Surveyor. Marsh marked this position by "set quarter section post" with two bearing trees marked as accessories.

May 3, 1974 - Set red and white iron pipe up 3'± using area resurvey. Established ties to pipe.

1/27/87, 7/16/92 - Found red and white iron pipe and updated ties.

February 26, 2002 - Found red and white iron pipe and updated ties. Established NAD 1983 (1996 adj.) Anoka County project coordinates by static GPS methods.

February 2012 - Found red and white iron pipe leaning southerly. Updated ties.

December 11, 2020 - Found red and white iron pipe leaning southerly. Verified position by VRS GPS methods. Updated ties.

February 1, 2024 - Found iron pipe laying down, covered in ground; removed. Replaced with 2"x 2"x 6' Telspar with 'County Surveyor' cap and punch mark, set up 0.5'±. Set to published coordinates using RTK GPS method and historical ties. Updated ties after setting. Added sign/ post to north, facing south. Job #24-100