

# CERTIFICATE OF LOCATION OF GOVERNMENT CORNER

County of Anoka

State of Minnesota

## Witness Corner of Sec. 28 Township 33 Range 24

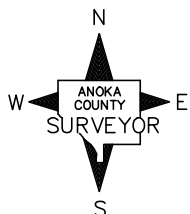
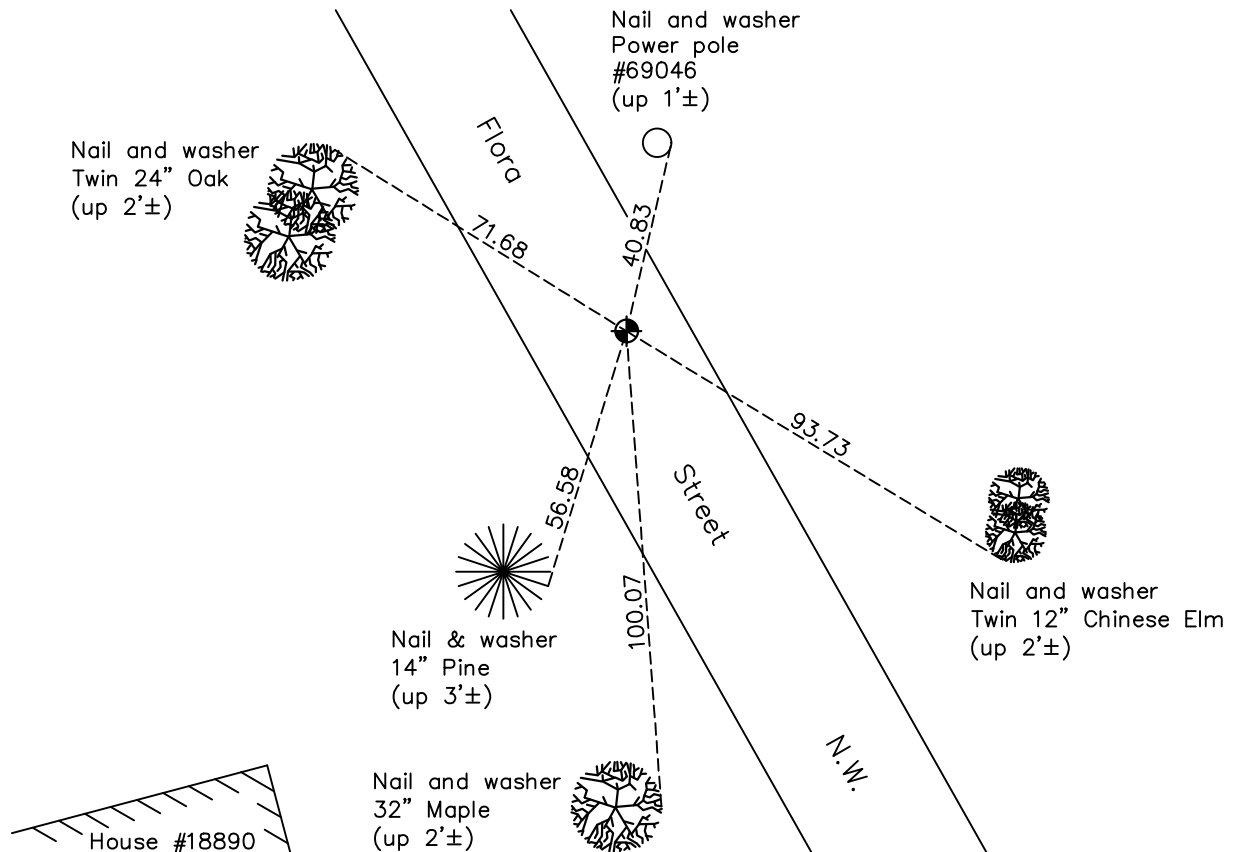
(witness to S1/4 Corner)

On the 3rd day of July, 2002, the described corner was evidenced by area resurvey

and to perpetuate the location of said corner, at the exact location thereof, a permanent marker was placed consisting of a cast iron monument

AND on the 16th day of June, 2020, said permanent marker was raised to surface and the ties were updated

Updated reference ties are as shown below.



Revision Date

06/24/2021

N.A.D. 1983 Coordinates  
(1996 Adjustment)

County Project Coordinates	
Northing	<u>201147.4868</u>
Easting	<u>481026.3522</u>
Date	<u>7/03/02</u>

I hereby certify that this United States public land survey monument record is correct and complete to the best of my knowledge and belief.

*David M. Zieglmeier* Date 7/30/21

David M. Zieglmeier, Anoka County Deputy Surveyor  
Minnesota License Number 46179

# HISTORY OF GOVERNMENT CORNER

Page No. 117A

County of Anoka

State of Minnesota

Witness Corner of Sec. 28 Township 33 Range 24  
(witness to S1/4 Corner)

## **CORNER HISTORY:**

July 3, 2002 - Set cast iron monument using area resurvey. Established ties to monument. Established NAD 1983 (1996 adj.) Anoka County project coordinates by static GPS methods.

March 1, 2012 - Found cast iron monument and updated ties.

April 4, 2017 - Found cast iron monument. Verified position by VRS GPS methods. Updated ties.

April 2, 2019 - Found cast iron monument. loosened top, updated ties

June 16, 2020 - Found cast iron monument. Raised monument to surface. Verified position by VRS GPS methods. Updated ties.