

# CERTIFICATE OF LOCATION OF GOVERNMENT CORNER

County of Anoka

State of Minnesota

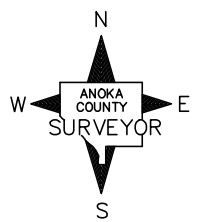
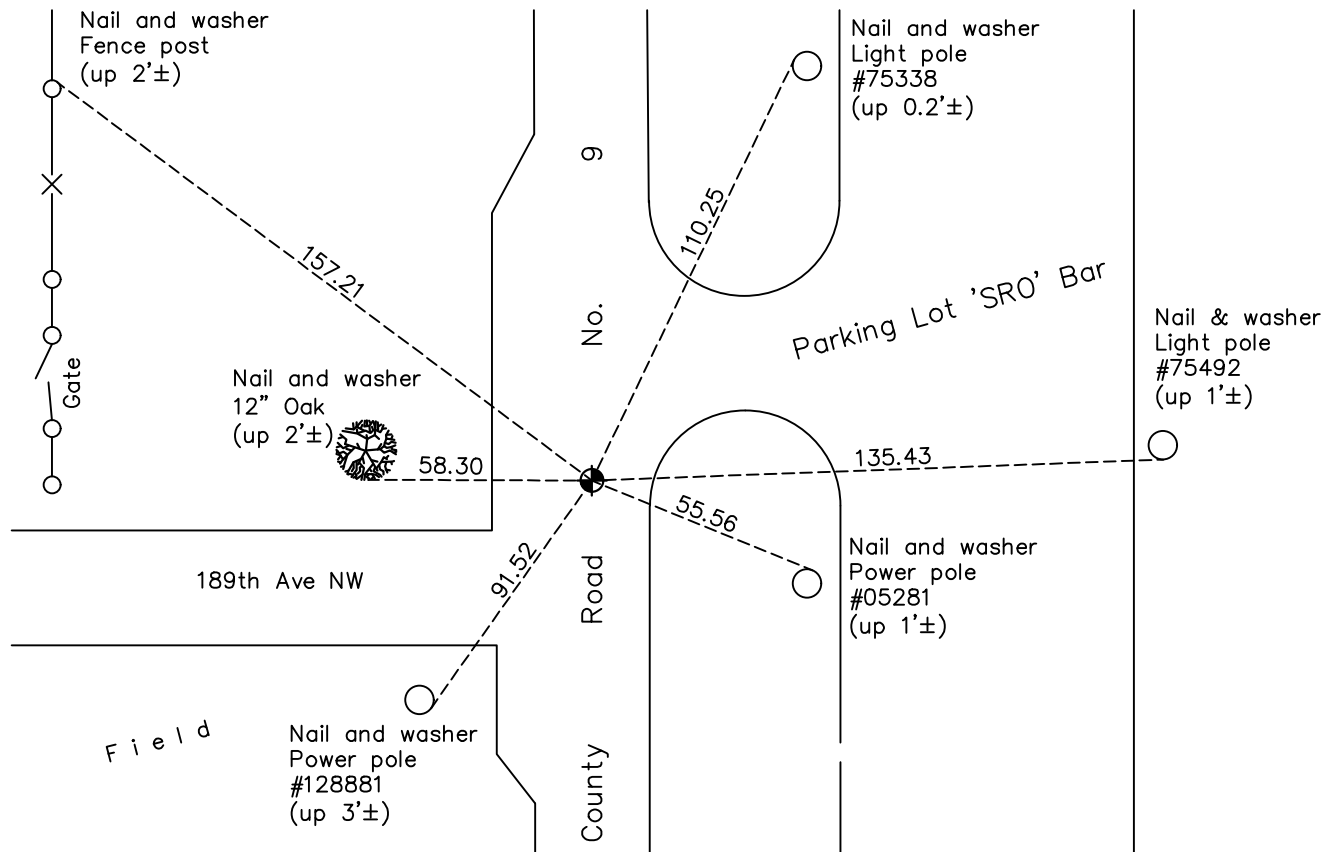
## Southeast Corner of Sec. 29 Township 33 Range 24

On the 14th day of July, 1960, the described corner was evidenced by an iron pipe

and to perpetuate the location of said corner, at the exact location thereof, a permanent marker was placed consisting of a cast iron monument

AND on the 22nd day of December, 2020, said permanent marker was found flush and the ties were updated

Updated reference ties are as shown below.



Revision Date  
06/25/2021

N.A.D. 1983 Coordinates  
(1996 Adjustment)

County Project Coordinates	
Northing	<u>201167.5726</u>
Easting	<u>479232.2401</u>
Date	<u>2/15/01</u>

I hereby certify that this United States public land survey monument record is correct and complete to the best of my knowledge and belief.

*David M Zieglmeier* Date 7/30/21

David Zieglmeier Anoka County Surveyor  
Minnesota License Number 46179

# HISTORY OF GOVERNMENT CORNER

Page No. 118

County of Anoka

State of Minnesota

## Southeast Corner of Sec. 29 Township 33 Range 24

### **CORNER HISTORY:**

July 14, 1960 - Found iron pipe and updated ties.

August 3, 1965 - Found iron pipe and replaced with a cast iron monument flush. Updated ties.

July 2, 1968 - Found cast iron monument and updated ties.

July 23, 1971 - Found cast iron monument and updated ties.

July 14, 1975 - Found cast iron monument and updated ties.

July 13, 1978 - Found cast iron monument and updated ties.

July 22, 1981 - Found cast iron monument and updated ties.

August 3, 1984 - Found cast iron monument and updated ties.

July 21, 1987 - Found cast iron monument and updated ties.

July 7, 1992 - Found cast iron monument and updated ties.

June 5, 1997 - Found cast iron monument and updated ties.

February 15, 2001 - Found cast iron monument and updated ties. Established NAD 1983 (1996 adj.) Anoka County project coordinates by static GPS methods.

July 23, 2001 - Found cast iron monument, set construction ties and updated corner ties prior to construction. Removed monument (unknown reset date).

March 29, 2012 - Found cast iron monument. Verified position by VRS GPS methods. Updated ties.

April 4, 2017 - Found cast iron monument. Verified position by VRS GPS methods. Updated ties.

December 22, 2020 - Found cast iron monument. Verified position by VRS GPS methods. Updated ties.