

# CERTIFICATE OF LOCATION OF GOVERNMENT CORNER

County of Anoka

State of Minnesota

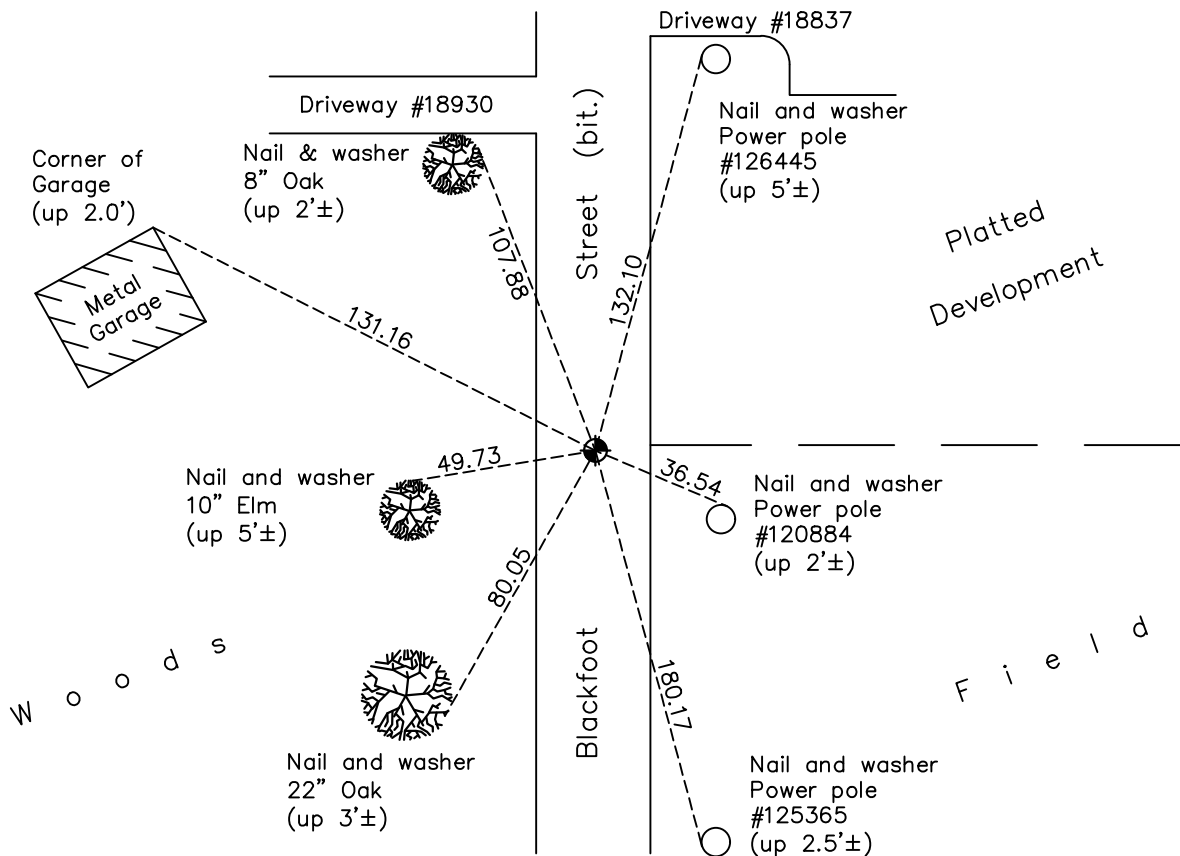
## Southwest Corner of Sec. 29 Township 33 Range 24

On the 10th day of November, 1965, the described corner was evidenced by a 1 1/2" iron pipe

and to perpetuate the location of said corner, at the exact location thereof, a permanent marker was placed consisting of a cast iron monument

AND on the 11th day of December, 2020, said permanent marker was found flush to surface and the ties were updated.

Updated reference ties are as shown below.



Revision Date

06/29/2021

N.A.D. 1983 Coordinates  
(1996 Adjustment)

County Project Coordinates	
Northing	<u>201275.5777</u>
Easting	<u>474005.7732</u>
Date	<u>6/26/01</u>

I hereby certify that this United States public land survey monument record is correct and complete to the best of my knowledge and belief.

*David M Zieglmeier* Date 7/30/21

David Zieglmeier Anoka County Surveyor  
Minnesota License Number 46179

# HISTORY OF GOVERNMENT CORNER

Page No. 120

County of Anoka

State of Minnesota

## Southwest Corner of Sec. 29 Township 33 Range 24

### **CORNER HISTORY:**

November 10, 1965 - Found 1-1/2" iron pipe down 1.5'± using N.C. Hoium's ties. Updated ties.

July 2, 1968 - Found 1-1/2" iron pipe and replaced with a cast iron monument down 0.5'±. Updated ties.

August 9, 1971 - Found cast iron monument and updated ties.

July 15, 1975 - Found cast iron monument and updated ties.

July 13, 1978 - Found cast iron monument and updated ties.

July 22, 1981 - Found cast iron monument and updated ties.

(assumed year) 1984 - Found cast iron monument and updated ties.

July 23, 1987 - Found cast iron monument and updated ties.

June 29, 1992 - Found cast iron monument and updated ties.

May 29, 1997 - Found cast iron monument and updated ties.

June 26, 2001 - Established NAD 1983 (1996 adj.) Anoka County project coordinates by static GPS methods.

November 27, 2002 - Found cast iron monument and updated ties.

March 30, 2012 - Found cast iron monument down 0.5'±. Verified position by VRS GPS methods. Updated ties.

April 4, 2017 - Found cast iron monument down 1.5'± under blacktop. Verified position by VRS GPS methods. Updated ties.

May 5, 2017 - Set new cast iron monument flush with blacktop on top of old cast iron monument down 1.5'±.

December 11, 2020 - Found cast iron monument flush. Verified position by VRS GPS methods. Updated ties.