

# CERTIFICATE OF LOCATION OF GOVERNMENT CORNER

County of Anoka

State of Minnesota

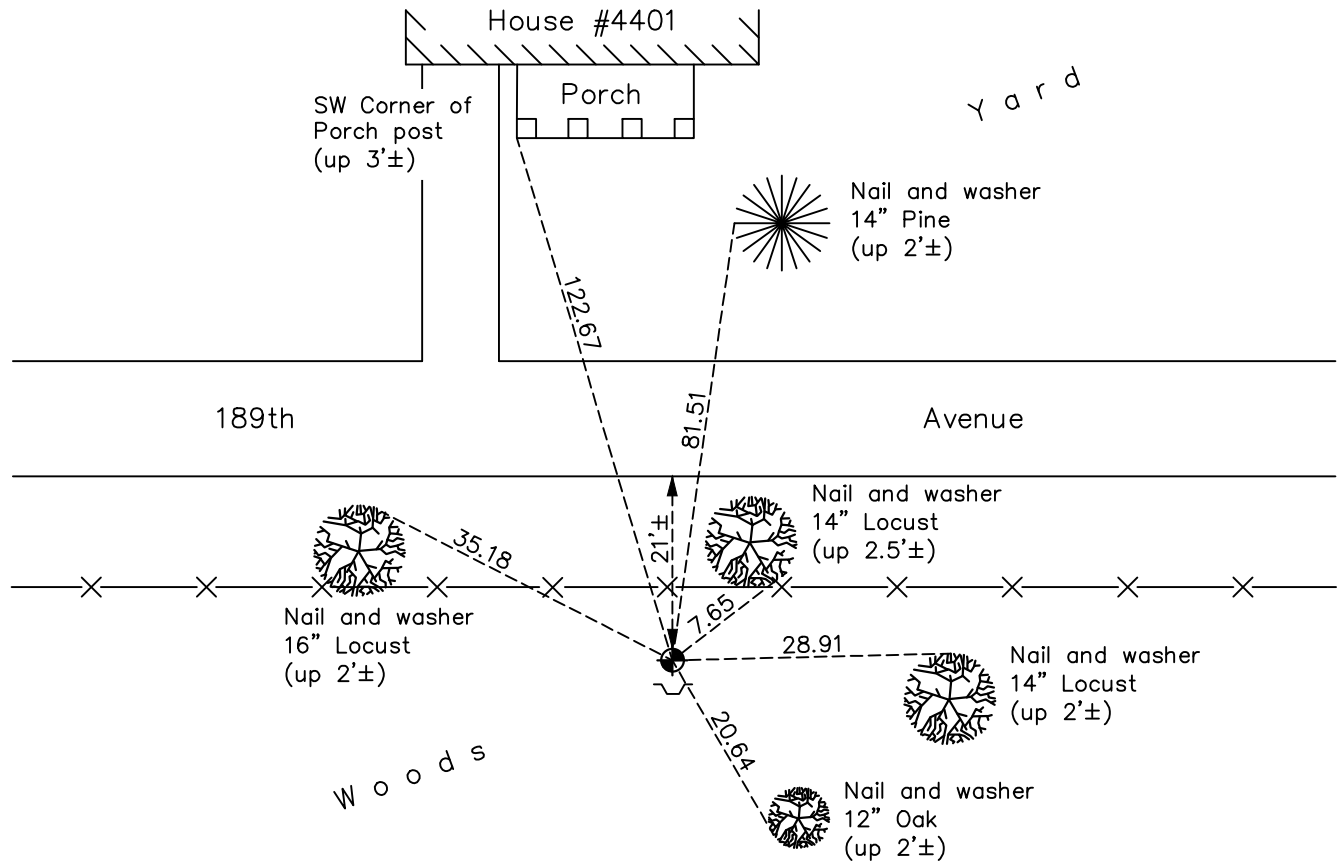
## South 1/4 Corner of Sec. 30 Township 33 Range 24

On the 21st day of May, 1970, the described corner was evidenced by area resurvey

and to perpetuate the location of said corner, at the exact location thereof, a permanent marker was placed consisting of a cast iron monument with a sign and post on the south side

AND on the 11th day of December, 2020, said permanent marker was found up 0.1'± and the ties were updated

Updated reference ties are as shown below.



Revision Date  
 06/29/2021

N.A.D. 1983 Coordinates  
(1996 Adjustment)

County Project Coordinates	
Northing	<u>201338.9158</u>
Easting	<u>471380.1315</u>
Date	<u>11/07/01</u>

I hereby certify that this United States public land survey monument record is correct and complete to the best of my knowledge and belief.

David Zieglmeier Date 3/29/24

David Zieglmeier Anoka County Surveyor  
 Minnesota License Number 46179

# HISTORY OF GOVERNMENT CORNER

Page No. 121

County of Anoka

State of Minnesota

South 1/4 Corner of Sec. 30 Township 33 Range 24

## **CORNER HISTORY:**

May 21, 1970 - Set cast iron monument flush using area resurvey. Established ties to monument.

August 9, 1971 - Found cast iron monument and updated ties.

June 17, 1975 - Reset cast iron monument and updated ties. Set sign and post on the south side.

July 14, 1978 - Found cast iron monument and updated ties.

July 24, 1981 - Found cast iron monument and updated ties.

August 6, 1984 - Found cast iron monument and updated ties.

July 23, 1987 - Found cast iron monument and updated ties.

June 16, 1992 - Found cast iron monument and updated ties.

May 27, 1997 - Found cast iron monument and updated ties.

November 7, 2001 - Established NAD 1983 (1996 adj.) Anoka County project coordinates by static GPS methods.

January 20, 2012 - Found cast iron monument w/sign and post on the south side. Updated ties.

April 6, 2017 - Found cast iron monument w/sign and post on the south side. Updated ties.

December 11, 2020 - Found cast iron monument up  $0.1' \pm$ , w/sign and post on the south side. Verified position by VRS GPS methods. Updated ties.