

CERTIFICATE OF LOCATION OF GOVERNMENT CORNER

County of Anoka

State of Minnesota

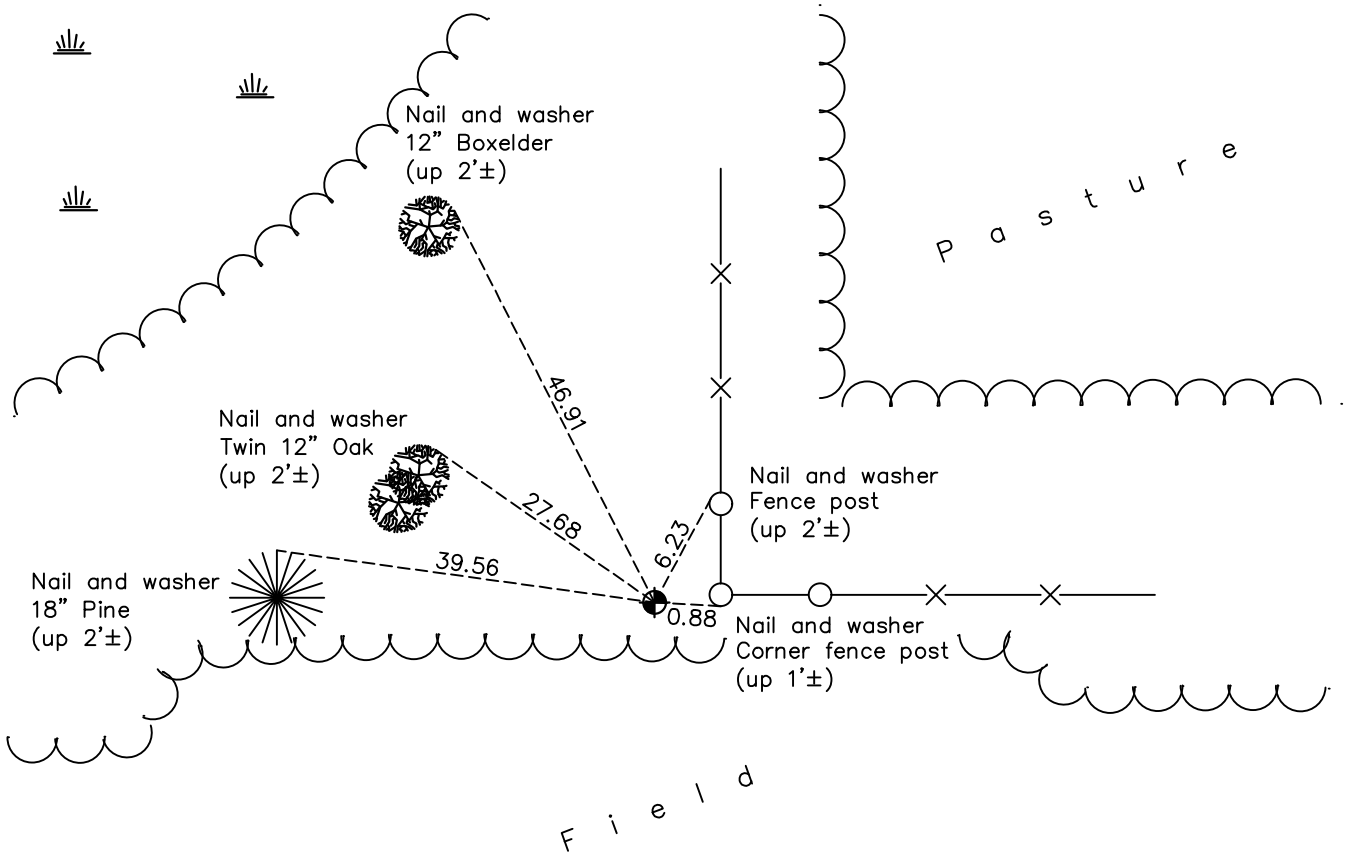
Southwest Corner of Sec. 30 Township 33 Range 24

On the 9th day of October, 1963, the described corner was evidenced by a 4" X 6" field stone

and to perpetuate the location of said corner, at the exact location thereof, a permanent marker was placed consisting of a cast iron monument

AND on the 16th day of April, 2021, said permanent marker was found flush and the ties were updated

Updated reference ties are as shown below.



Revision Date

06/29/2021

N.A.D. 1983 Coordinates
(1996 Adjustment)

County Project Coordinates	
Northing	<u>201404.4186</u>
Easting	<u>468662.6110</u>
Date	<u>3/11/02</u>

I hereby certify that this United States public land survey monument record is correct and complete to the best of my knowledge and belief.

David M Zieglmeier Date 7/30/21

David Zieglmeier Anoka County Surveyor
Minnesota License Number 46179

HISTORY OF GOVERNMENT CORNER

Page No. 121A

County of Anoka

State of Minnesota

Southwest Corner of Sec. 30 Township 33 Range 24

CORNER HISTORY:

October 9, 1963 - Found a 4" x 6" field stone and updated ties.

July 6, 1989 - Found cast iron monument (unknown set date) and updated ties.

July 2, 1997 - Found cast iron monument and updated ties.

March 11, 2002 - Found cast iron monument and updated ties. Established NAD 1983 (1996 adj.) Anoka County project coordinates by static GPS methods.

January 24, 2012 - Found cast iron monument and updated ties.

May 31, 2017 - Found cast iron monument flush and updated ties.

April 16, 2021 - Found cast iron monument flush and updated ties.