

# CERTIFICATE OF LOCATION OF GOVERNMENT CORNER

County of Anoka

State of Minnesota

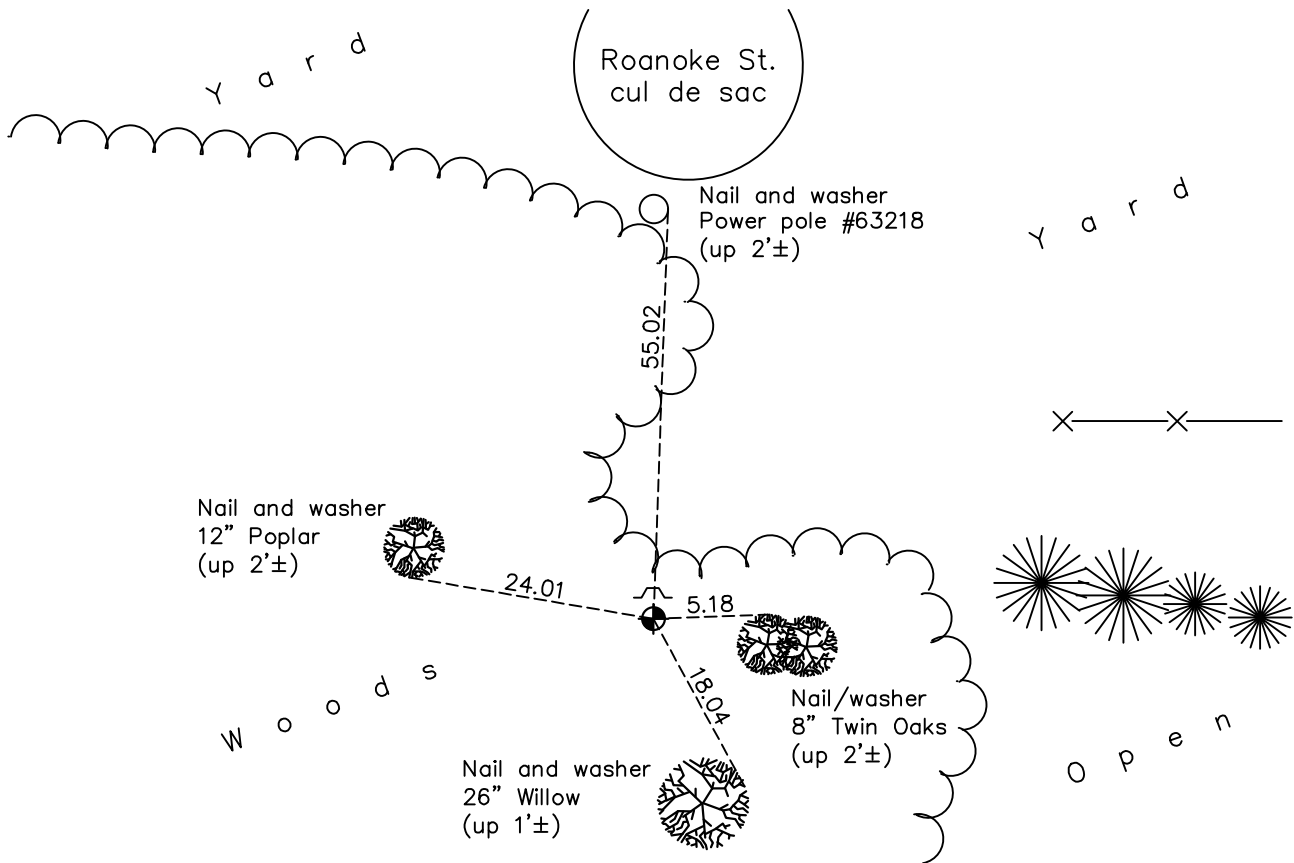
## West 1/4 Corner of Sec. 31 Township 33 Range 24

On the 13th day of December, 1965, the described corner was evidenced by area resurvey

and to perpetuate the location of said corner, at the exact location thereof, a permanent marker was placed consisting of a cast iron monument with a sign and post on the north side

AND on the 11th day of December, 2020, said permanent marker was found flush and the ties were updated

Updated reference ties are as shown below.



Revision Date

07/06/2021

N.A.D. 1983 Coordinates  
(1996 Adjustment)

County Project Coordinates	
Northing	<u>198769.9087</u>
Easting	<u>468654.6967</u>
Date	<u>11/07/01</u>

I hereby certify that this United States public land survey monument record is correct and complete to the best of my knowledge and belief.

*David M Zieglmeier* Date 7/30/21

David Zieglmeier Anoka County Surveyor  
Minnesota License Number 46179

# HISTORY OF GOVERNMENT CORNER

Page No. 121B

County of Anoka

State of Minnesota

West 1/4 Corner of Sec. 31 Township 33 Range 24

## **CORNER HISTORY:**

December 13, 1965 - Set cast iron monument using area resurvey. Established ties to monument. Set sign and post on the north side.

July 3, 1985 - Found cast iron monument and updated ties.

August 29, 1988 - Found cast iron monument and updated ties.

May 27, 1997 - Found cast iron monument and updated ties.

November 7, 2001 - Established NAD 1983 (1996 adj.) Anoka County project coordinates by static GPS methods.

January 20, 2012 - Found cast iron monument w/sign and post on the north side. Updated ties.

June 29, 2017 - Found cast iron monument flush w/sign and post on the north side. Updated ties.

December 11, 2020 - Found cast iron monument flush w/sign and post on the north side. Verified position by VRS GPS methods. Updated ties.