

CERTIFICATE OF LOCATION OF GOVERNMENT CORNER

County of Anoka

State of Minnesota

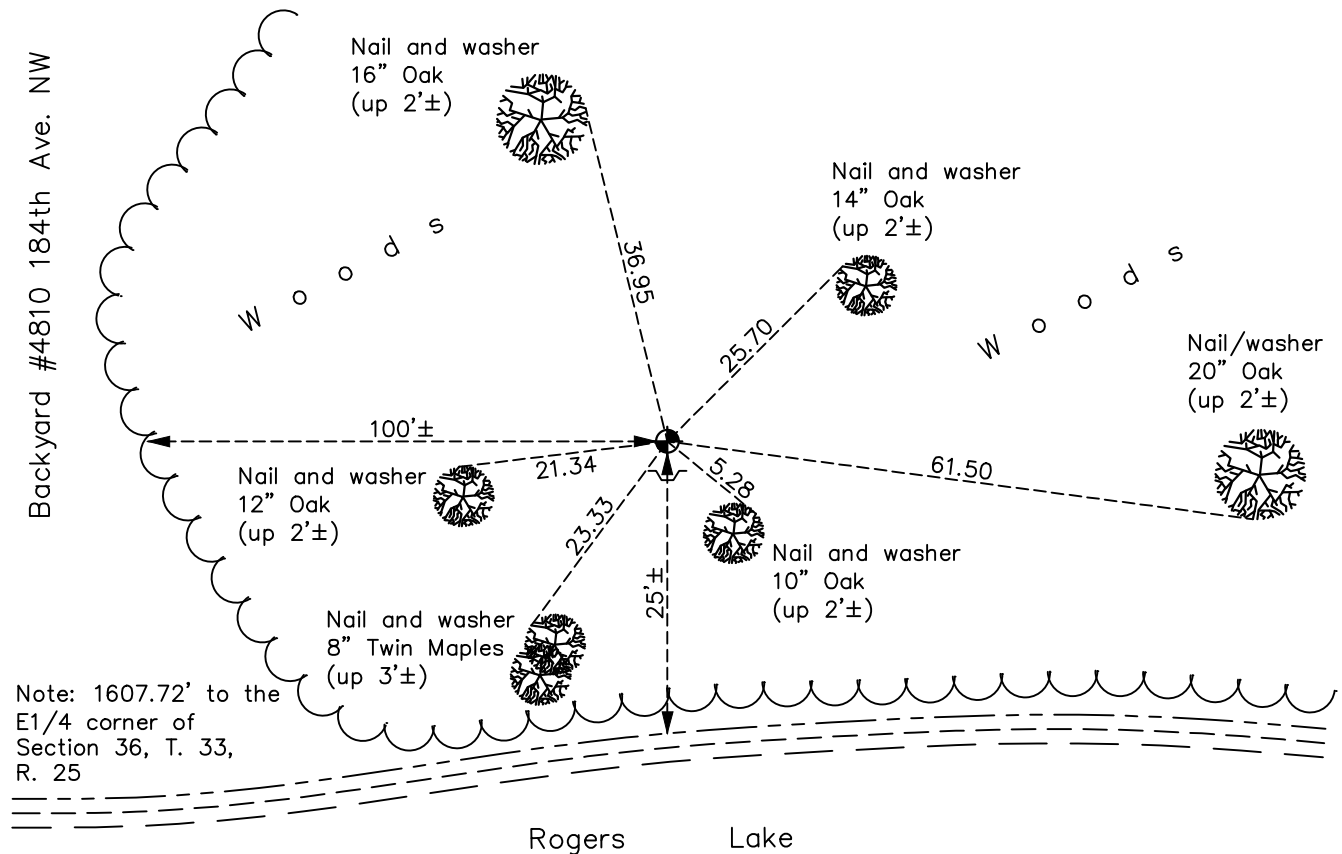
Witness Corner of Sec. 31 Township 33 Range 24
(on west line of SW1/4)

On the 22nd day of December, 1965, the described corner was evidenced by area resurvey

and to perpetuate the location of said corner, at the exact location thereof, a permanent marker was placed consisting of a cast iron monument with a sign and post on the south side

AND on the 11th day of December, 2020, said permanent marker was found up 0.2'± and the ties were updated

Updated reference ties are as shown below.



Revision Date

07/06/2021

N.A.D. 1983 Coordinates
(1996 Adjustment)

County Project Coordinates

Northing 197162.0081

Easting 468649.8049

Date 2/25/02

I hereby certify that this United States public land survey monument record is correct and complete to the best of my knowledge and belief.

David M Zieglmeier Date 7/30/21

David Zieglmeier Anoka County Surveyor

Minnesota License Number 46179

HISTORY OF GOVERNMENT CORNER

Page No. 121C

County of Anoka

State of Minnesota

Witness Corner of Sec. 31 Township 33 Range 24
(on west line of SW1/4)

CORNER HISTORY:

December 22, 1965 - Set cast iron monument using area resurvey. Established ties to monument. Set sign and post on the north side.

July 12, 1985 - Found cast iron monument and updated ties.

August 29, 1989 - Found cast iron monument and updated ties.

May 27, 1997 - Found cast iron monument and updated ties.

February 25, 2002 - Established NAD 1983 (1996 adj.) Anoka County project coordinates by static GPS methods.

January 23, 2012 - Found cast iron monument w/sign and post on the south side. Updated ties.

June 29, 2017 - Found cast iron monument up 0.2'± and updated ties.

December 11, 2020 - Found cast iron monument up 0.2'± and updated ties.