

CERTIFICATE OF LOCATION OF GOVERNMENT CORNER

County of Anoka

State of Minnesota

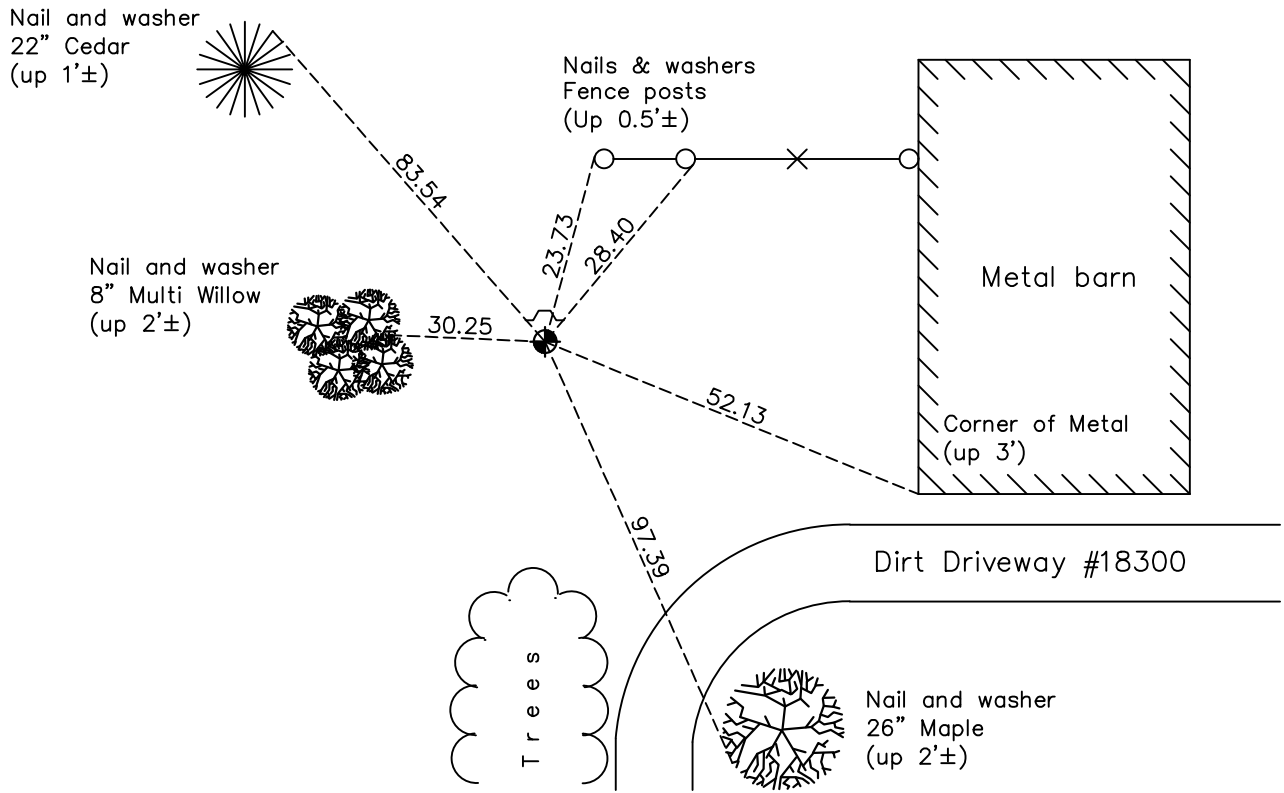
Witness Corner of Sec. 33 Township 33 Range 24
 (on east line of SE1/4)

On the 7th day of March, 1975, the described corner was evidenced by _____

and to perpetuate the location of said corner, at the exact location thereof, a permanent marker was placed consisting of a cast iron monument with a sign and post on the north side

AND on the 23rd day of December, 2020, said permanent marker was found down 0.3'± with a sign and post on the north side and the ties were updated

Updated reference ties are as shown below.



Revision Date
07/09/2021

N.A.D. 1983 Coordinates
 (1996 Adjustment)

County Project Coordinates	
Northing	<u>197378.1080</u>
Easting	<u>484533.7311</u>
Date	<u>11/16/01</u>

I hereby certify that this United States public land survey monument record is correct and complete to the best of my knowledge and belief.

David Zieglmeier Date 6/28/23

David Zieglmeier Anoka County Surveyor
 Minnesota License Number 46179

HISTORY OF GOVERNMENT CORNER

Page No. 125

County of Anoka

State of Minnesota

Witness Corner of Sec. 33 Township 33 Range 24
(on east line of SE1/4)

CORNER HISTORY:

March 7, 1975 - Set iron pipe using area resurvey. Established ties to pipe. Set sign and post on the north side.

July 17, 1978 - Found iron pipe and updated ties.

July 22, 1981 - Found iron pipe and updated ties.

August 19, 1984 - Found 1/2" iron pipe flush w/sign and post on the north side 1'±. Updated ties.

July 22, 1987 - Found iron pipe and updated ties.

May 1, 1992 - Found iron pipe and replaced with a cast iron monument. Updated ties.

May 29, 1997 - Found cast iron monument and updated ties.

November 16, 2001 - Established NAD 1983 (1996 adj.) Anoka County project coordinates by static GPS methods.

March 6, 2002 - Found cast iron monument and updated ties.

February 28, 2012 - Found cast iron monument down 0.5'±. Verified position by VRS GPS methods. Updated ties. Replaced sign and post 4/4/12.

March 29, 2017 - Found cast iron monument down 0.5'±. Verified position by VRS GPS methods. Updated ties.

December 23, 2020 - Found cast iron monument down 0.3'±. Updated ties.