

# CERTIFICATE OF LOCATION OF GOVERNMENT CORNER

County of Anoka

State of Minnesota

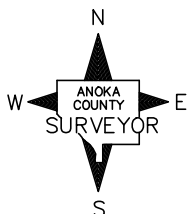
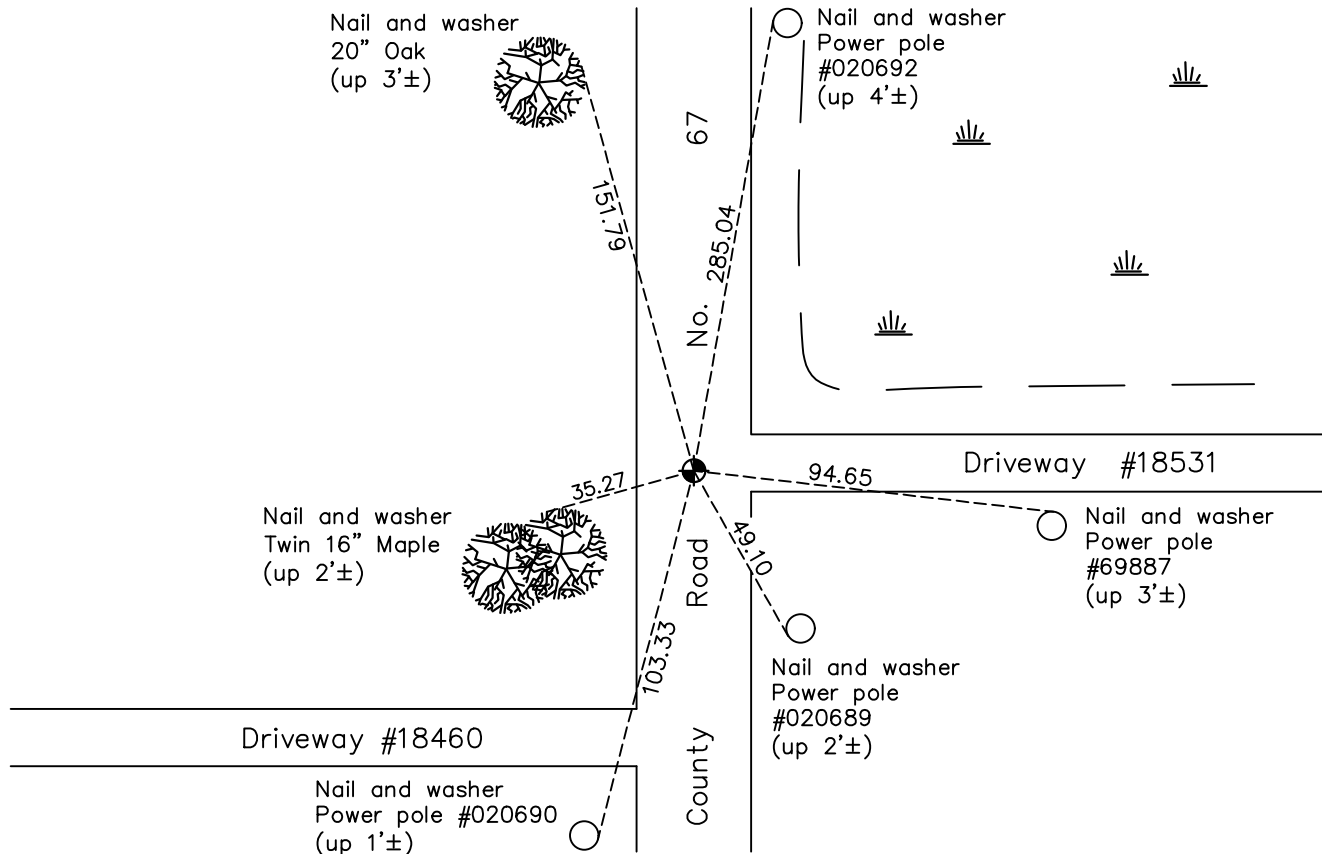
## East 1/4 Corner of Sec. 35 Township 33 Range 24

On the 22nd day of July, 1965, the described corner was evidenced by a 1/2" iron pipe

and to perpetuate the location of said corner, at the exact location thereof, a permanent marker was placed consisting of a cast iron monument

AND on the 16th day of December, 2020, said permanent marker was found flush and the ties were updated

Updated reference ties are as shown below.



Revision Date

07/09/2021

N.A.D. 1983 Coordinates  
(1996 Adjustment)

County Project Coordinates	
Northing	<u>198485.7469</u>
Easting	<u>495051.8381</u>
Date	<u>7/24/01</u>

I hereby certify that this United States public land survey monument record is correct and complete to the best of my knowledge and belief.

*David M Zieglmeier* Date 7/30/21

David Zieglmeier Anoka County Surveyor  
Minnesota License Number 46179

# HISTORY OF GOVERNMENT CORNER

Page No. 127

County of Anoka

State of Minnesota

## East 1/4 Corner of Sec. 35 Township 33 Range 24

### **CORNER HISTORY:**

December 31, 1962 - N.C. Hoium set a 1/2" iron pipe and established ties to the pipe.

July 22, 1965 - Found 1/2" iron pipe set by N.C. Hoium flush and on centerline of blacktop road. Updated ties.

July 5, 1968 - Found 1/2" iron pipe and replaced with a cast iron monument. Updated ties.

July 22, 1971 - Found cast iron monument and updated ties.

July 15, 1975 - Found cast iron monument and updated ties.

July 17, 1978 - Found cast iron monument and updated ties.

July 21, 1981 - Found cast iron monument and updated ties.

August 7, 1984 - Found cast iron monument and updated ties.

July 27, 1987 - Found cast iron monument and updated ties.

January 28, 1992 - Found cast iron monument and updated ties.

May 28, 1997 - Found cast iron monument and updated ties.

July 24, 2001 - Found cast iron monument and updated ties. Established NAD 1983 (1996 adj.) Anoka County project coordinates by static GPS methods.

May 10, 2011 - Found cast iron monument and updated ties prior to road overlay. Loosened monument top.

March 29, 2012 - Found cast iron monument down after road overlay and raised flush. Verified position by VRS GPS methods. Updated ties.

March 28, 2017 - Found cast iron monument. Verified position by VRS GPS methods. Updated ties.

December 16, 2020 - Found cast iron monument flush. Verified position by VRS GPS methods. Updated ties.