

CERTIFICATE OF LOCATION OF GOVERNMENT CORNER

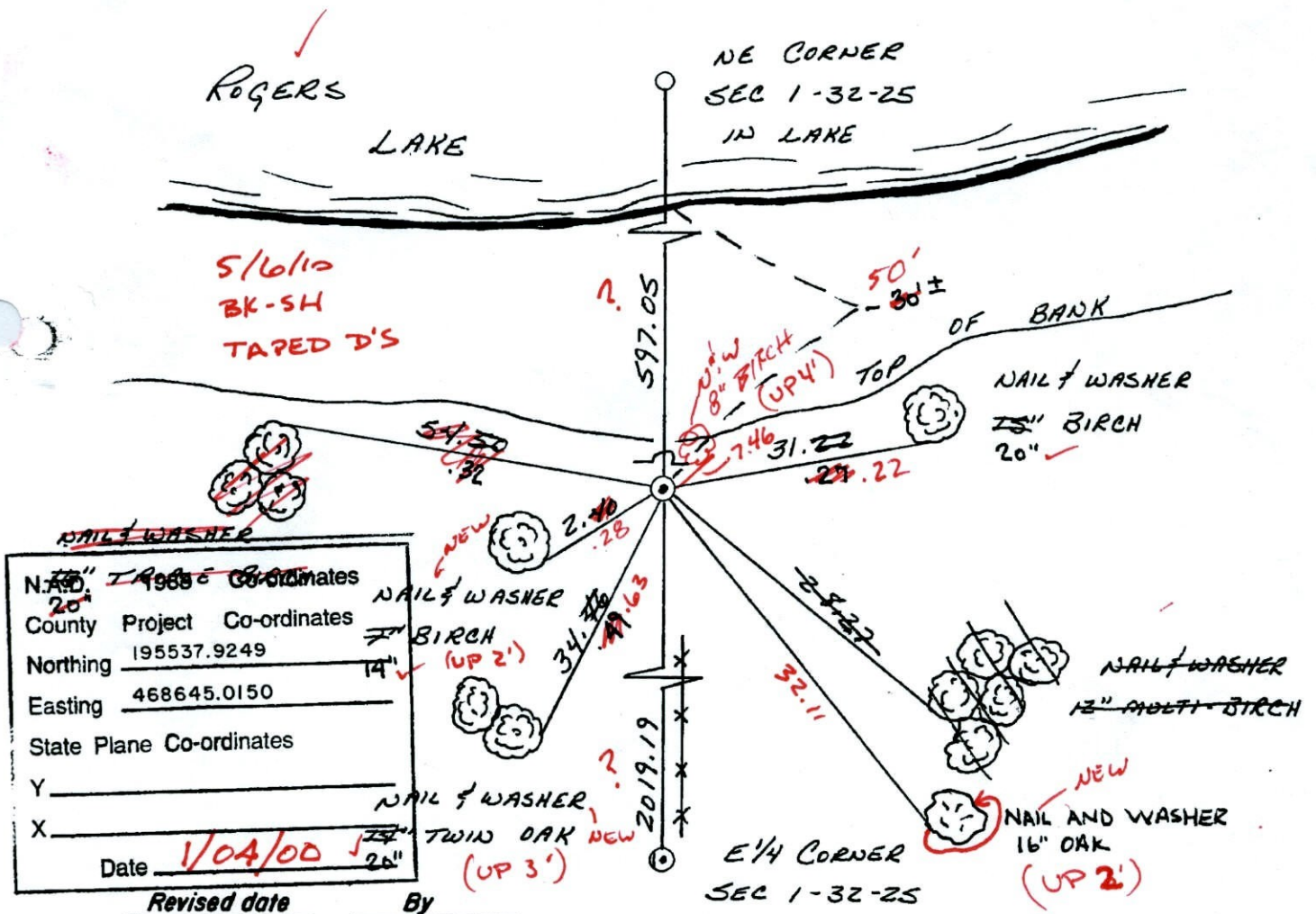
County of Anoka

State of Minnesota

WITNESS Corner of Sec. 1 Township 32 Range 25
ON EAST LINE

I hereby certify that on the 27 day of MAY, 1966, I found the described corner which was evidenced by AREA RESURVEY

and I further certify that to perpetuate the location of said corner, I did, at the exact location thereof, place a permanent marker consisting of CAST IRON MONUMENT WITH SIGN AND POST ON NORTH SIDE (UP 0.1) which reference or witness monuments are located in the manner following:



N.A.S.D. 1985 Co-ordinates	20"
County Project Co-ordinates	14"
Northing	195537.9249
Easting	468645.0150
State Plane Co-ordinates	
Y	
X	
Date	<u>1/04/00</u>

Revised date	By
6-18-76	ADAMS
6-15-79	STEPHENS
8-23-82	ROSS
7-30-85	ROSS
7-14-88	GUETZKO
1-4-00	

Minnesota State Plane Coordinates
South Zone
Y _____ X _____
County Surveyor _____ Date _____
Registered Land Surveyor No. _____

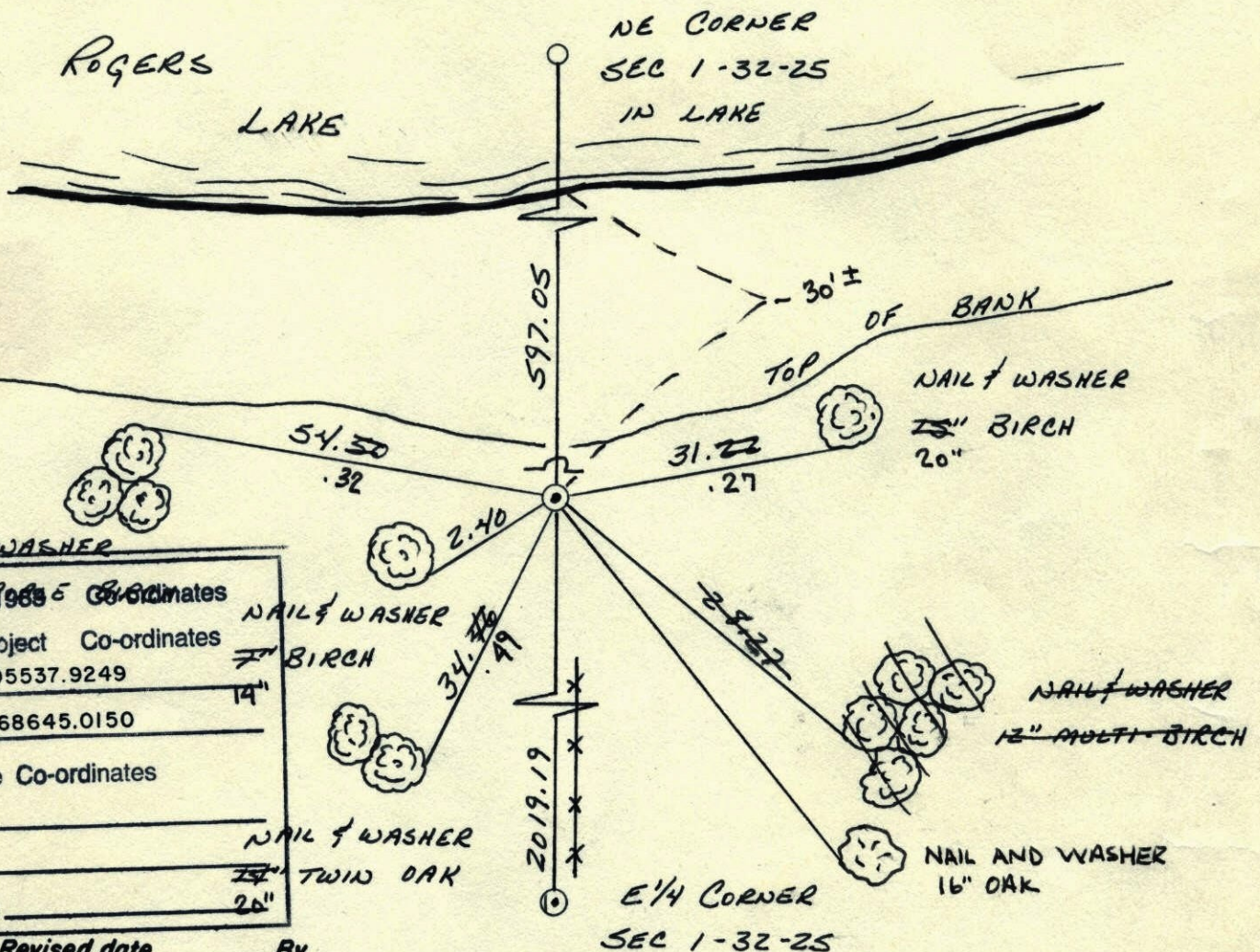
CERTIFICATE OF LOCATION OF GOVERNMENT CORNER

County of Anoka

State of Minnesota

WITNESS Corner of Sec. 1 Township 32 Range 25
 ON EAST LINE
 I hereby certify that on the 27 day of MAY, 1966, I found the described corner
 which was evidenced by AREA RESURVEY

and I further certify that to perpetuate the location of said corner, I did, at the exact
 location thereof, place a permanent marker consisting of CAST IRON MONUMENT
WITH SIGN AND POST ON NORTH SIDE
 which reference or witness monuments are located in the manner following:



N.A.D. 83	2006	Coordinates
County	Project	Co-ordinates
Northing	195537.9249	14"
Easting	468645.0150	
State Plane Co-ordinates		
Y		
X		
Date	26"	

Revised date	By
6-18-76	ADAMS
6-15-79	STEPHENS
8-23-82	ROSS
7-30-85	ROSS
7-14-88	QUETZKO
1-4-00	

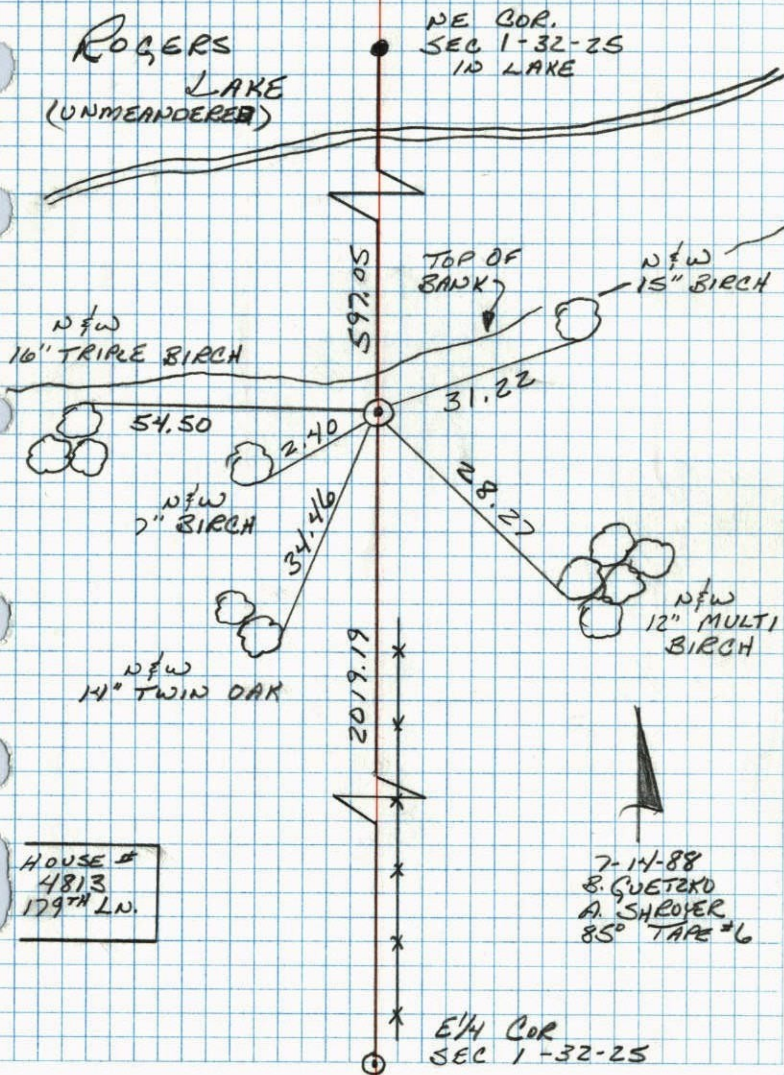
Minnesota State Plane Coordinates
 South Zone
 Y _____ X _____

 County Surveyor _____ Date _____
 Registered Land Surveyor No. _____

1
WITNESS CORNER ON THE EAST LINE
OF SEC 1 T32 R25

RETIRED CAST IRON MONUMENT

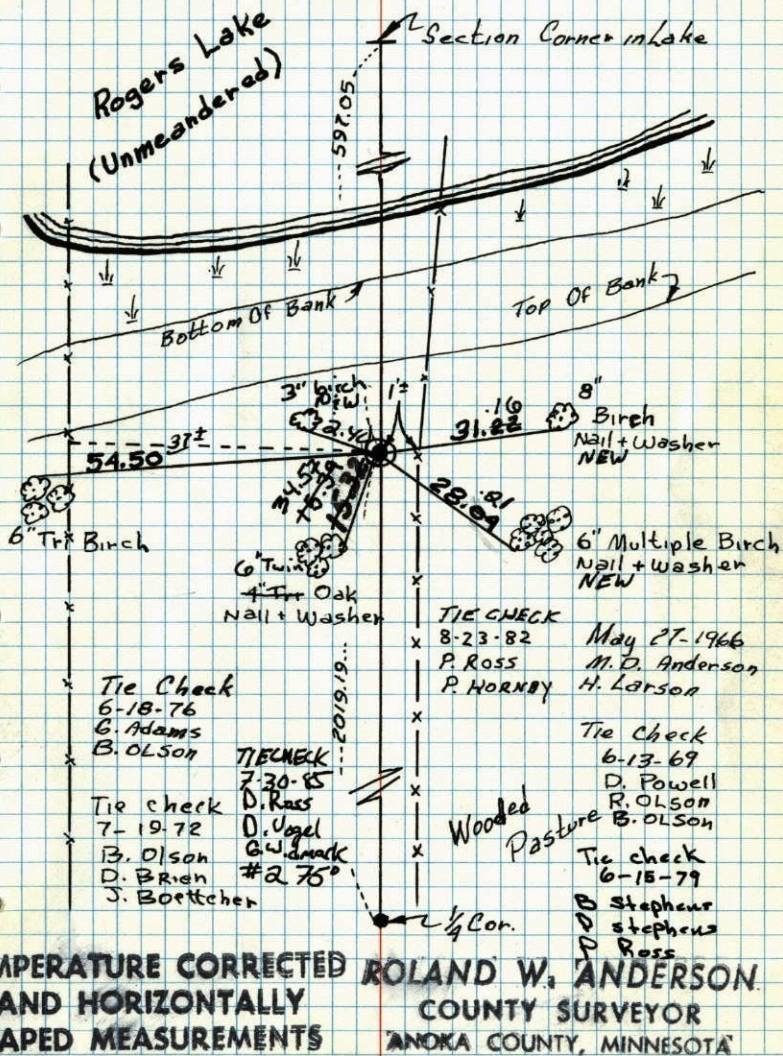
ROGERS
LAKE
(UNMEANDERED)



1
W.C. on East Line of Sec 1-T32-R25

South Side of Rogers Lake

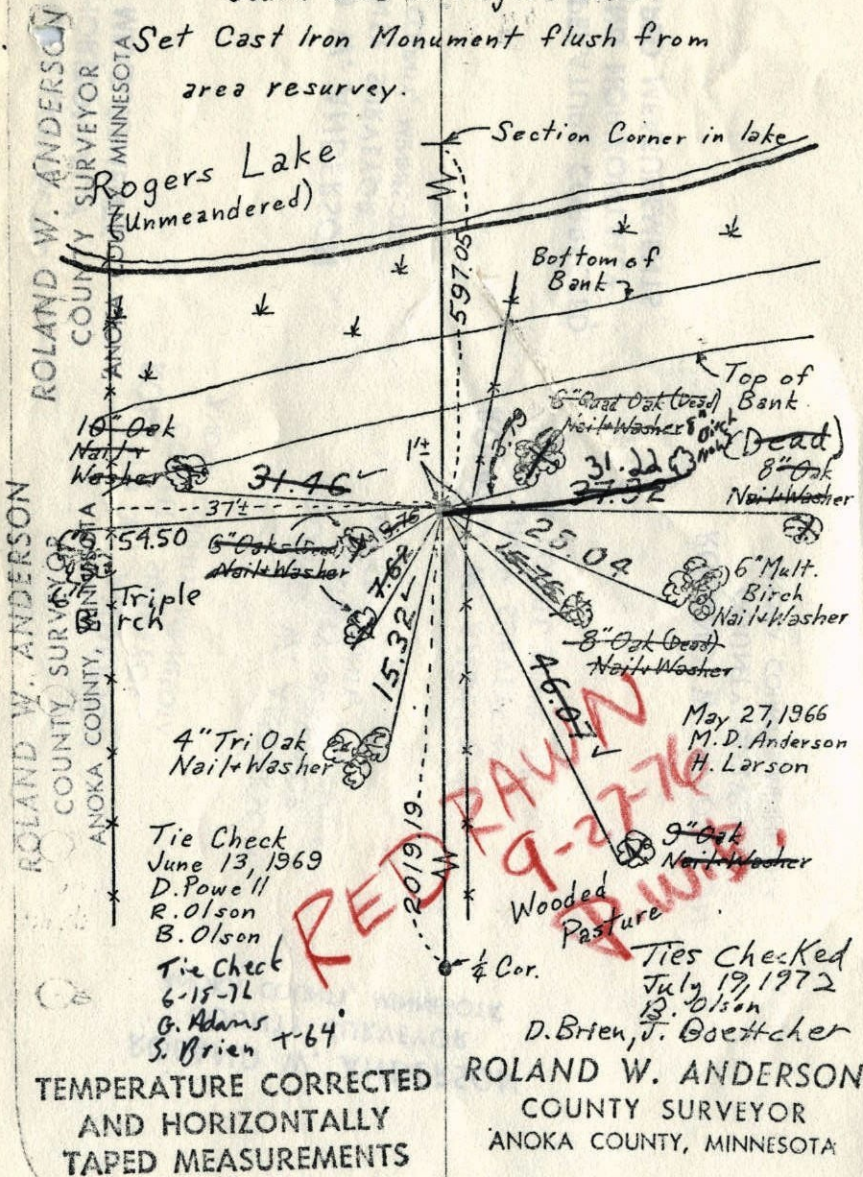
Set Cast Iron Monument Plush From
Area Resurvey



W.C. on East Line of Sec 1-T32-R25

South Side of Rogers Lake.

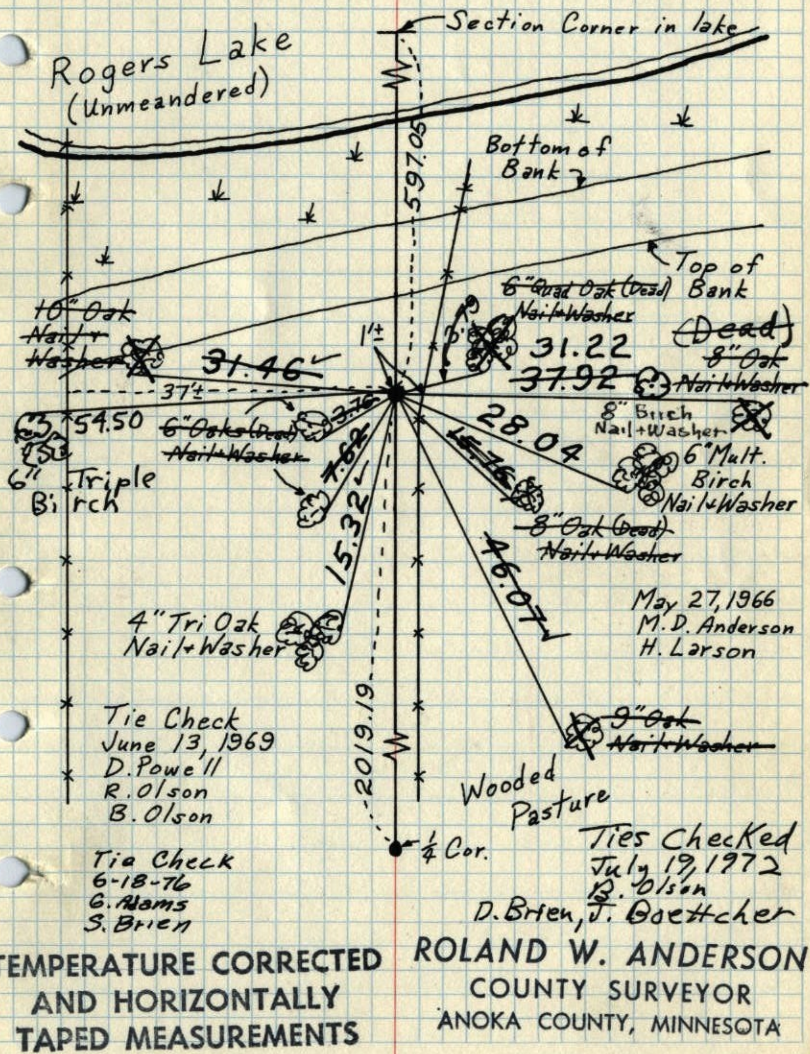
Set Cast Iron Monument flush from
area resurvey.



W.C. on East Line of Sec 1-T32-R25

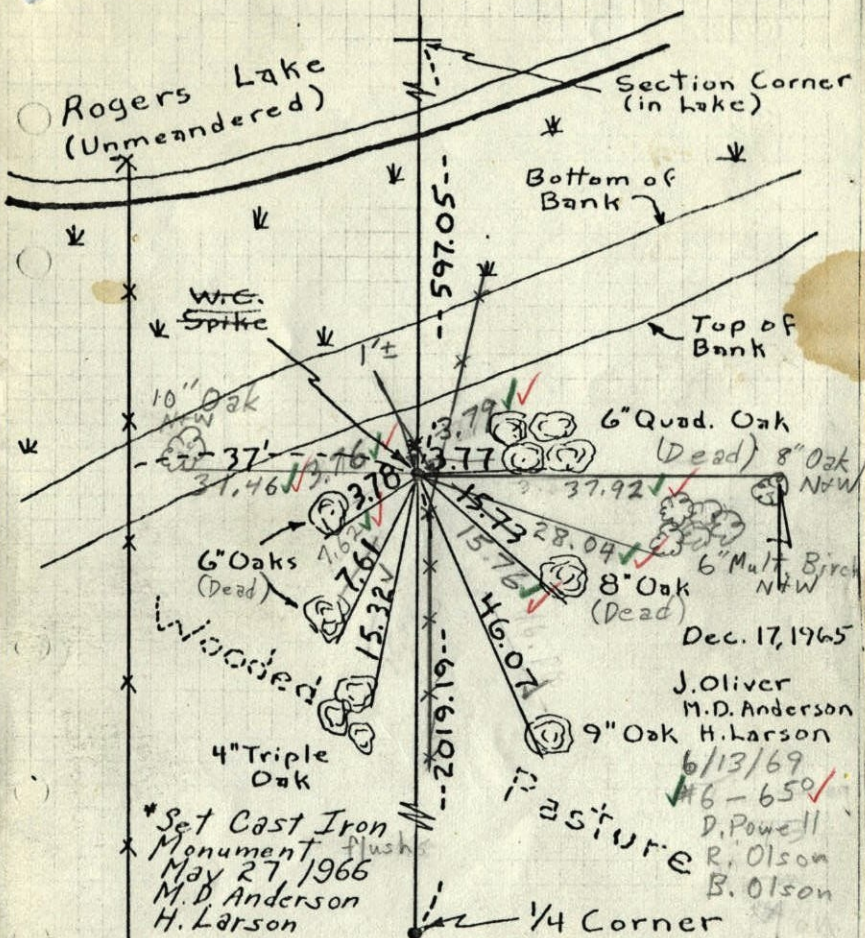
South Side of Rogers Lake.

Set Cast Iron Monument flush from
area resurvey.



7
W.C. on E. line Sec. 1, T32, R25

Set Spike from Resurvey. Nails and Washers
in all tie trees.

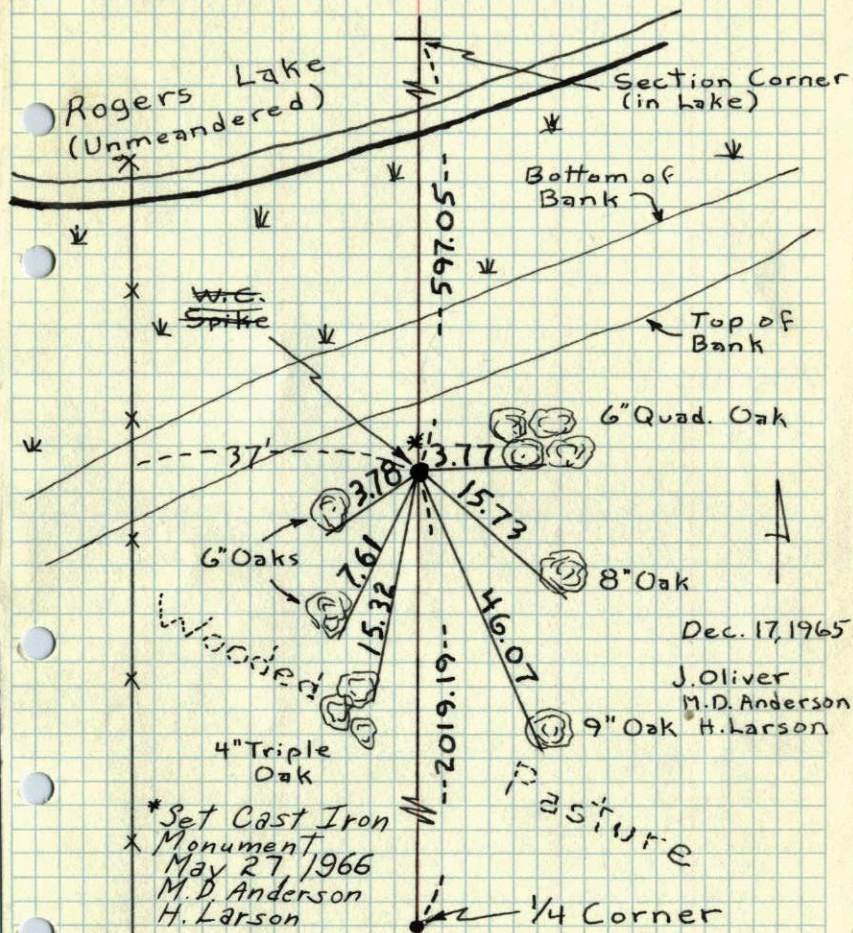


TEMPERATURE CORRECTED
AND HORIZONTALLY
TAPED MEASUREMENTS

ROLAND W. ANDERSON
COUNTY SURVEYOR
ANOKA COUNTY, MINNESOTA

1
W.C. on E. line Sec. 1, T32, R25

Set Spike* from Resurvey. Nails and Washers
in all tie trees.

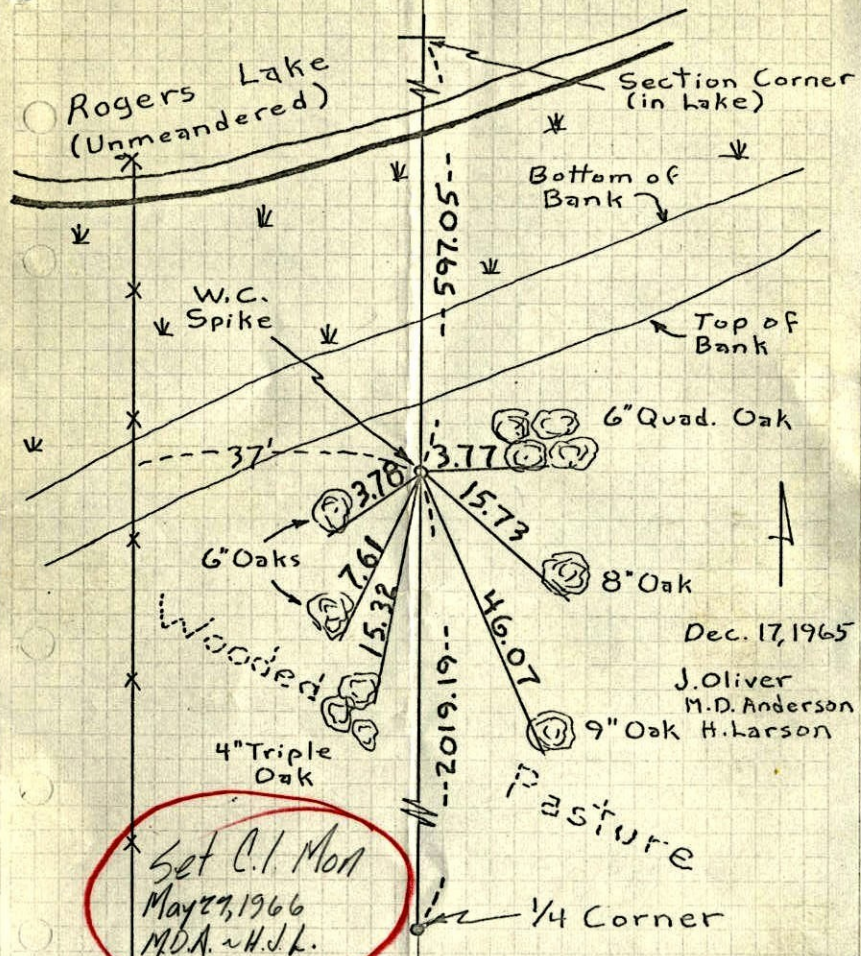


TEMPERATURE CORRECTED
AND HORIZONTALLY
TAPED MEASUREMENTS

ROLAND W. ANDERSON
COUNTY SURVEYOR
ANOKA COUNTY, MINNESOTA

W.C. on E. line Sec. 1, T32, R25

Set Spike from Resurvey. Nails and Washers in all tie trees. in all tie trees.



TEMPERATURE CORRECTED AND HORIZONTALLY TAPED MEASUREMENTS

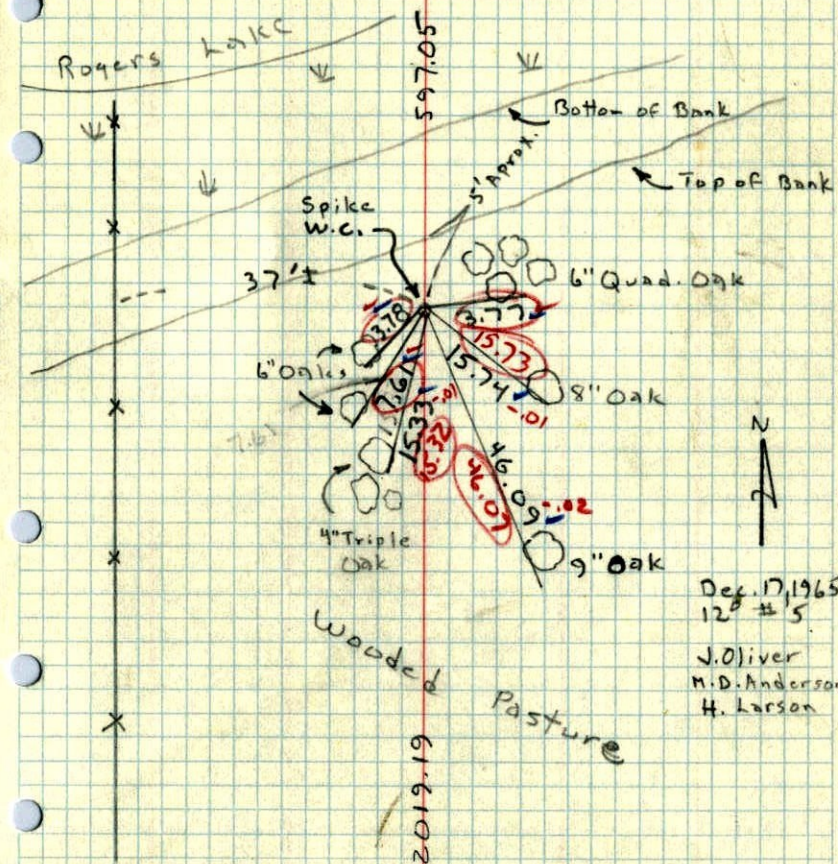
ROLAND W. ANDERSON
COUNTY SURVEYOR
ANOKA COUNTY, MINNESOTA

Dec. 17, 1965
J. Oliver
M.D. Anderson
H. Larson

W.C. on East line Sec. 1, T32, R25

2019.19' North of E 1/4 Cor.

Set ^{Spike} East Iron Monument From Resurvey. Nails and washers in all tie trees. Will Set Cast Iron Mon. next spring.



Dec. 17, 1965
12th #5
J. Oliver
M.D. Anderson
H. Larson