

CERTIFICATE OF LOCATION OF GOVERNMENT CORNER

County of Anoka

State of Minnesota

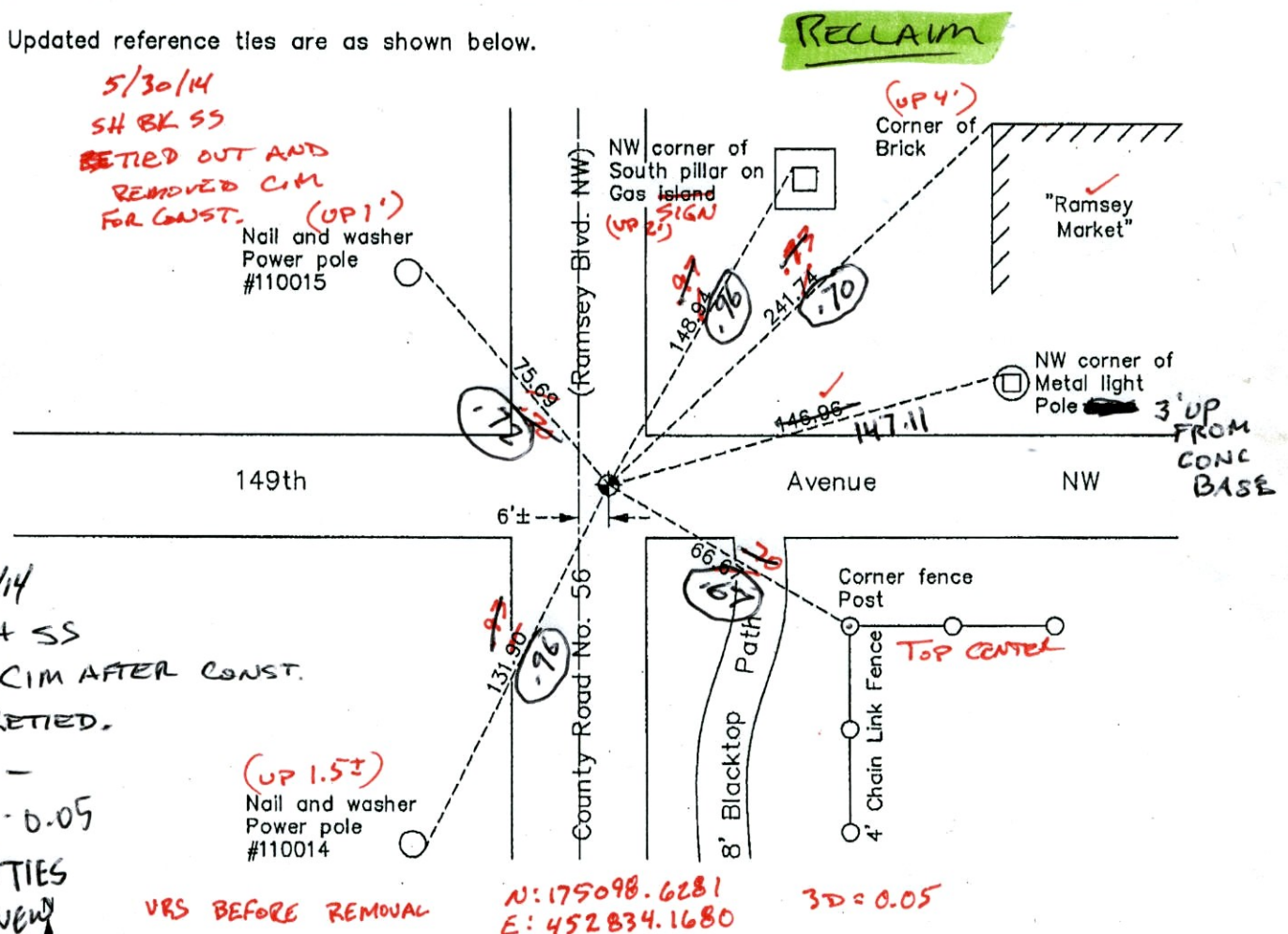
Northwest Corner of Sec. 27 Township 32 Range 25

On the 5th day of January, 1961, the described corner was evidenced by a 1/2" iron pipe

and to perpetuate the location of said corner, at the exact location thereof, a permanent marker was placed consisting of a cast iron monument

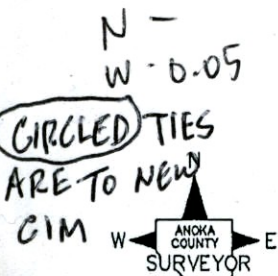
AND on the 30th day of April, 2010, said permanent marker was found flush and the ties were updated

Updated reference ties are as shown below.



5/30/14
SH BK SS
RETIED OUT AND
REMOVED CIM
FOR CONST. (UP 1')

7/10/14
JS SH SS
RESET CIM AFTER CONST.
AND RETIED.



VRS BEFORE REMOVAL N: 175098.6281 3D = 0.05
E: 452834.1680

N.A.D. 1983 Coordinates
(1996 Adjustment)

County Project Coordinates	
Northing	175098.6417
Easting	452834.2316
Date	12/17/99

I hereby certify that this United States public land survey monument record is correct and complete to the best of my knowledge and belief.

Larry D. Holum Date 7/26/10

Larry D. Holum, Anoka County Surveyor
Minnesota License Number 18165

Revision Date
7/26/10

VRS 3D QUAL = 0.04

N: 175098.5952
E: 452834.2039

CERTIFICATE OF LOCATION OF GOVERNMENT CORNER

County of Anoka

State of Minnesota

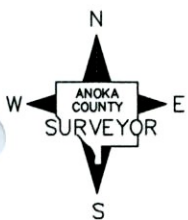
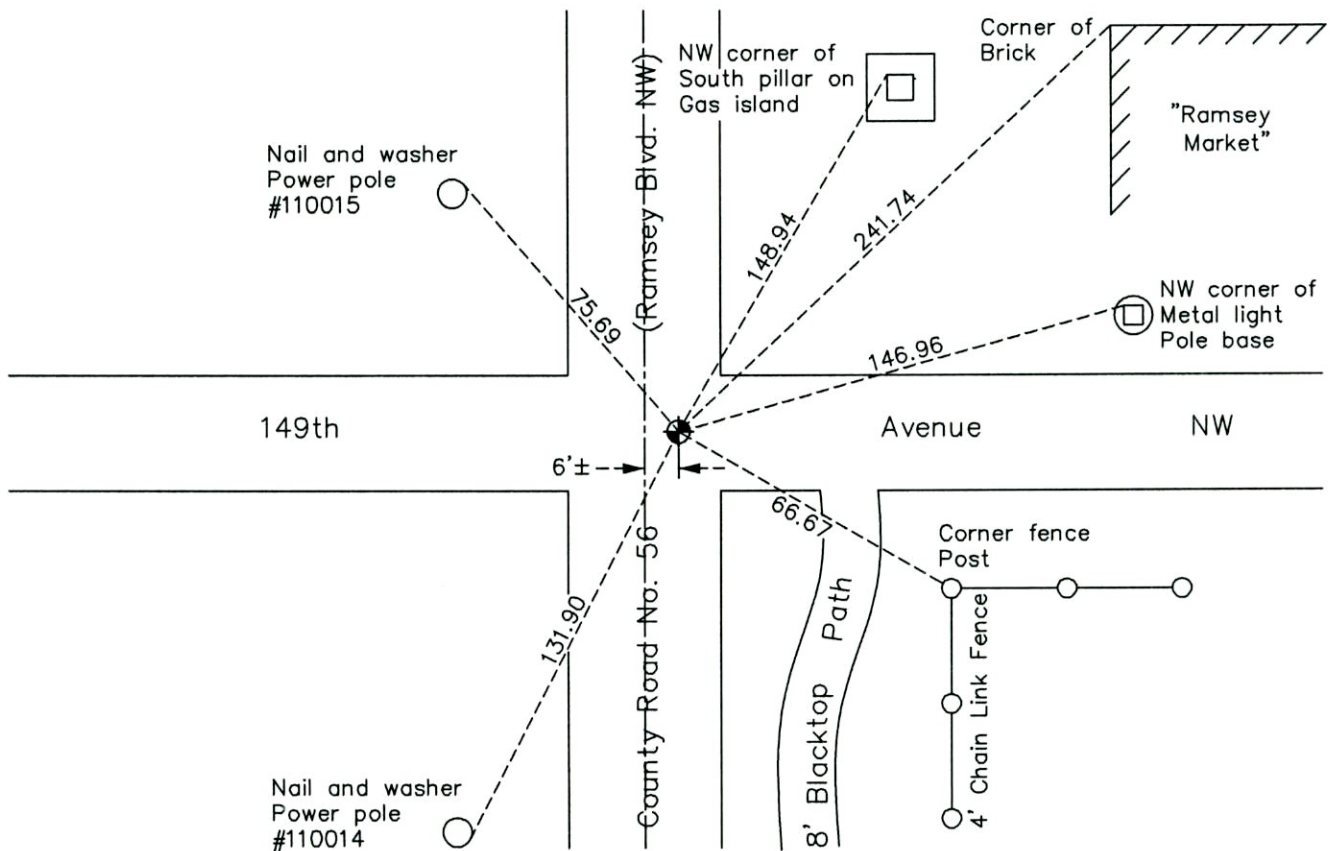
Northwest Corner of Sec. 27 Township 32 Range 25

On the 5th day of January, 1961, the described corner was evidenced by a 1/2" iron pipe

and to perpetuate the location of said corner, at the exact location thereof, a permanent marker was placed consisting of a cast iron monument

AND on the 30th day of April, 2010, said permanent marker was found flush and the ties were updated

Updated reference ties are as shown below.



Revision Date
7/26/10

N.A.D. 1983 Coordinates
(1996 Adjustment)

County Project Coordinates	
Northing	175098.6417
Easting	452834.2316
Date	12/17/99

I hereby certify that this United States public land survey monument record is correct and complete to the best of my knowledge and belief.

Larry D. Hoium Date 7/26/10

Larry D. Hoium, Anoka County Surveyor

Minnesota License Number 18165

CERTIFICATE OF LOCATION OF GOVERNMENT CORNER

County of Anoka State of Minnesota

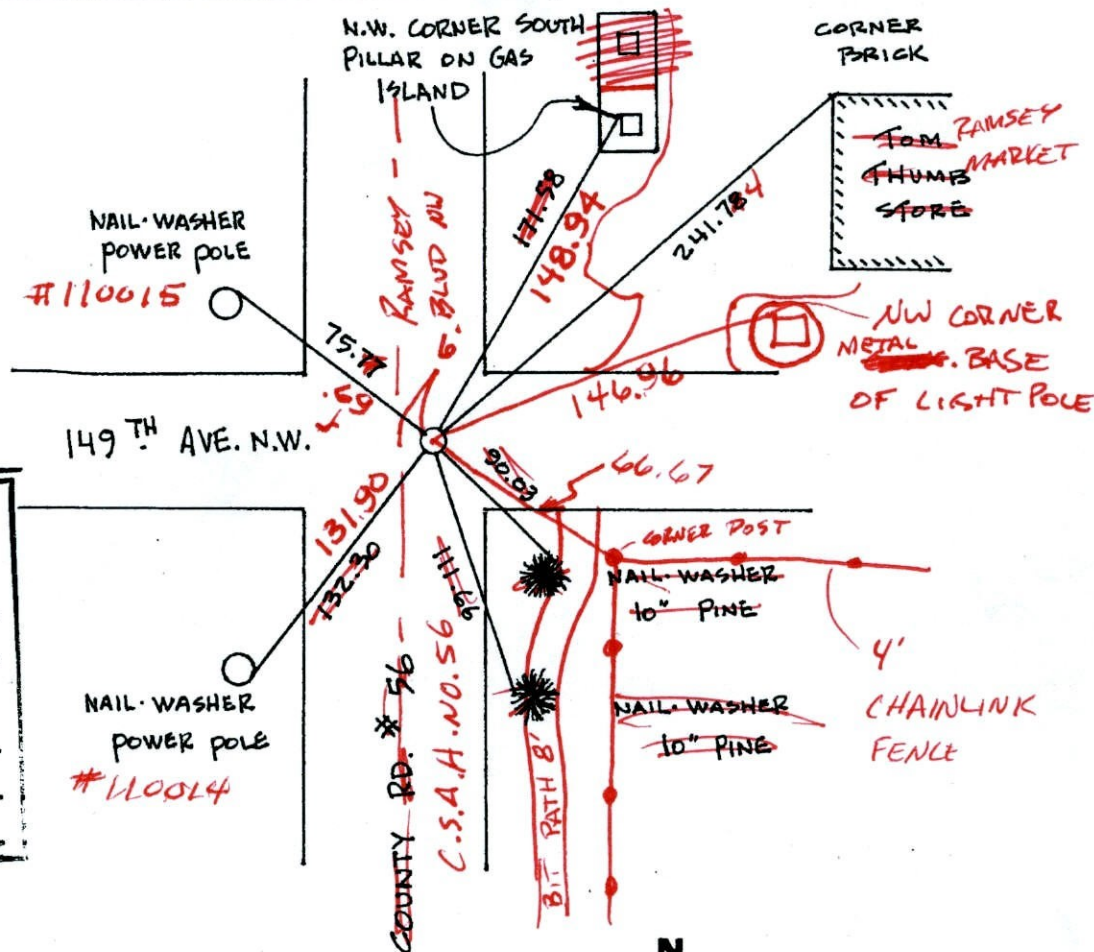
NORTHWEST Corner of Sec. 27 Township 32 Range 25

I hereby certify that on the 5TH day of JANUARY, 19 61, I found the described corner which was evidenced by 1/2" IRON PIPE

and I further certify that to perpetuate the location of said corner, I did, at the exact location thereof, place a permanent marker consisting of CAST IRON MONUMENT (FLUSH)

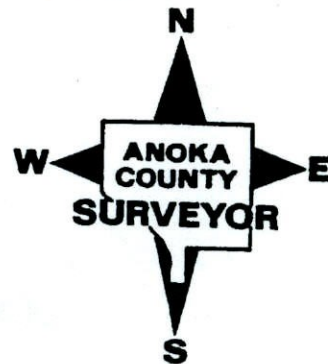
which reference or witness monuments are located in the manner following:

4/30/10
BK-SH
T/H
RAINY

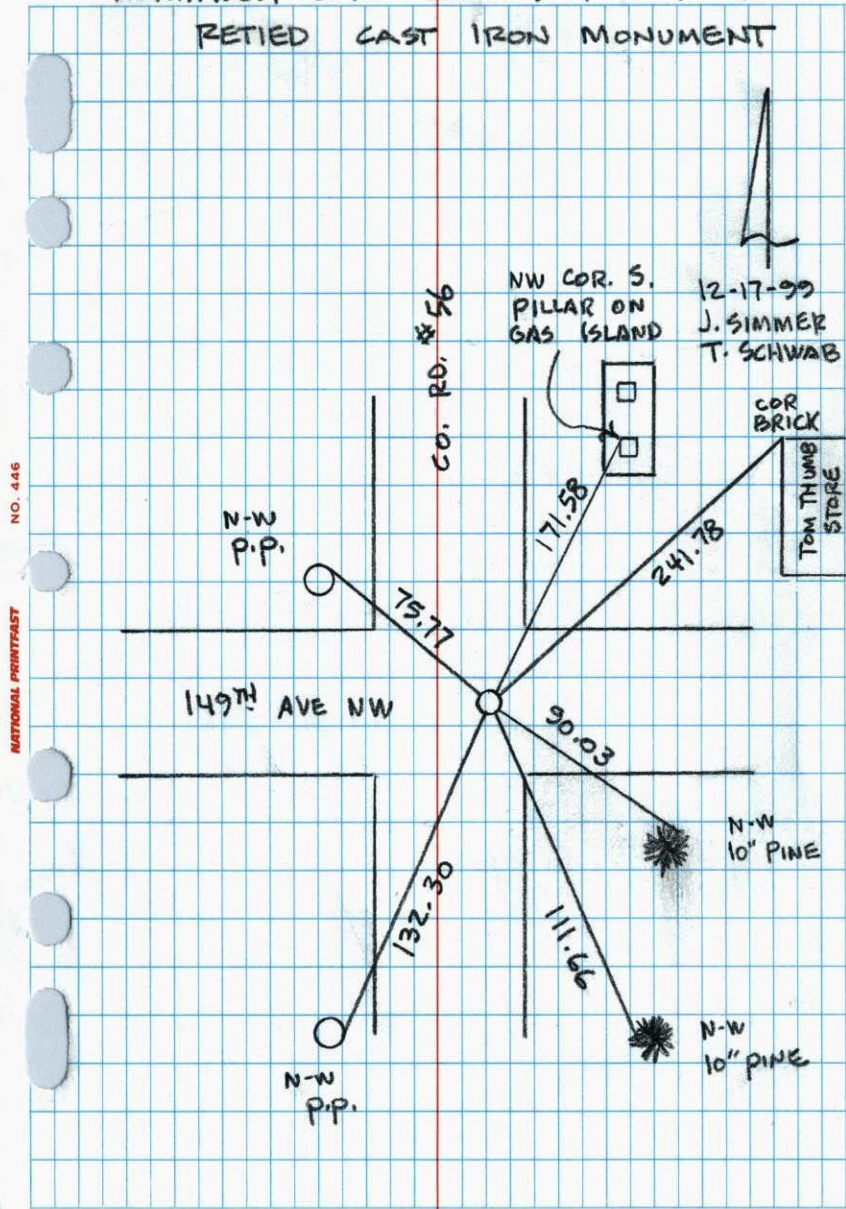


N.A.D.	1983	Co-ordinates
County Project	Co-ordinates	
Northing	175098.6417	
Easting	452834.2316	
State Plane	Co-ordinates	
Y		
X		
Date	12/17/99	

Revised date	Revised date	Revised date
7-7-76		
6-25-79		
4-14-82		
7-20-82		
6-17-88		
8-6-93		
12-17-99		

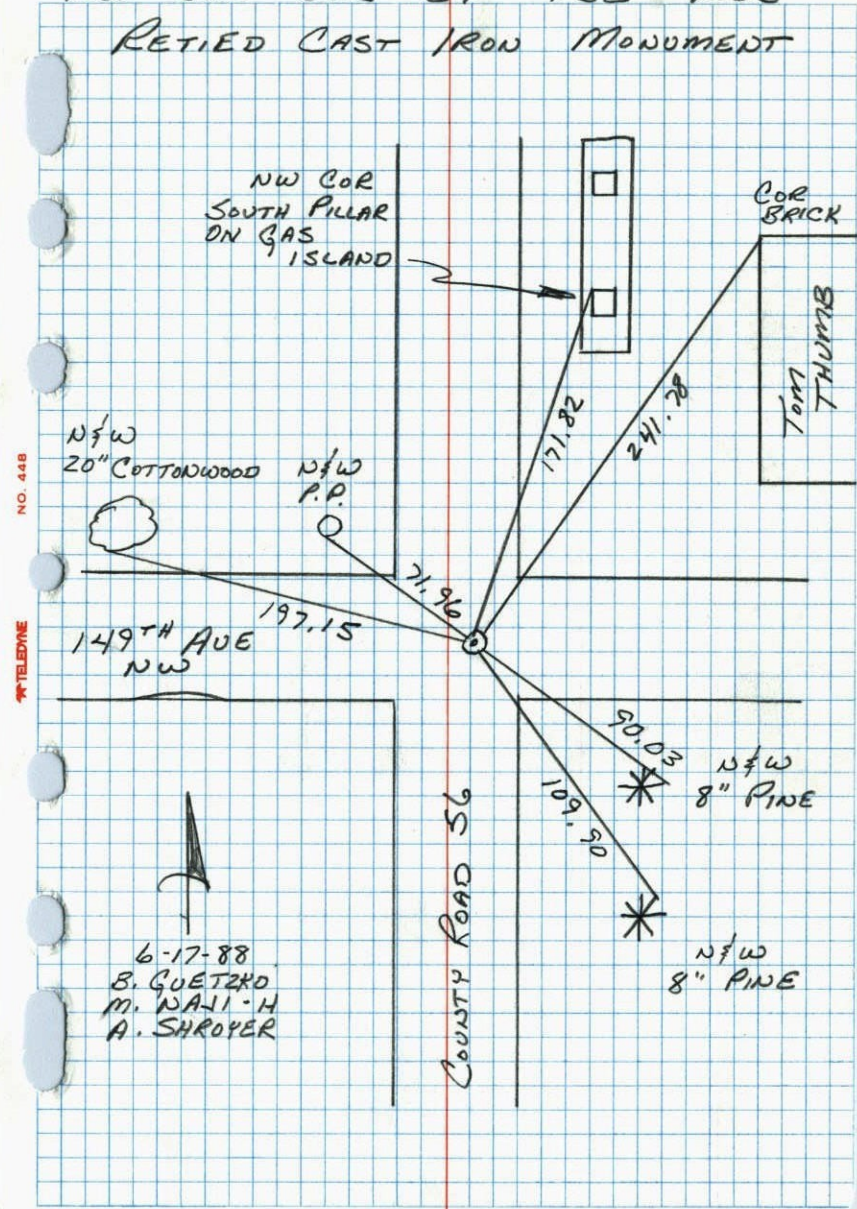


NORTHWEST COR. SEC. 27 T32 R25
RETIED CAST IRON MONUMENT



NATIONAL PRINTFAST NO. 446

NW COR SEC 27 T32 R25
RETIED CAST IRON MONUMENT



NATIONAL PRINTFAST NO. 446

CERTIFICATE OF LOCATION OF GOVERNMENT CORNER

County of Anoka

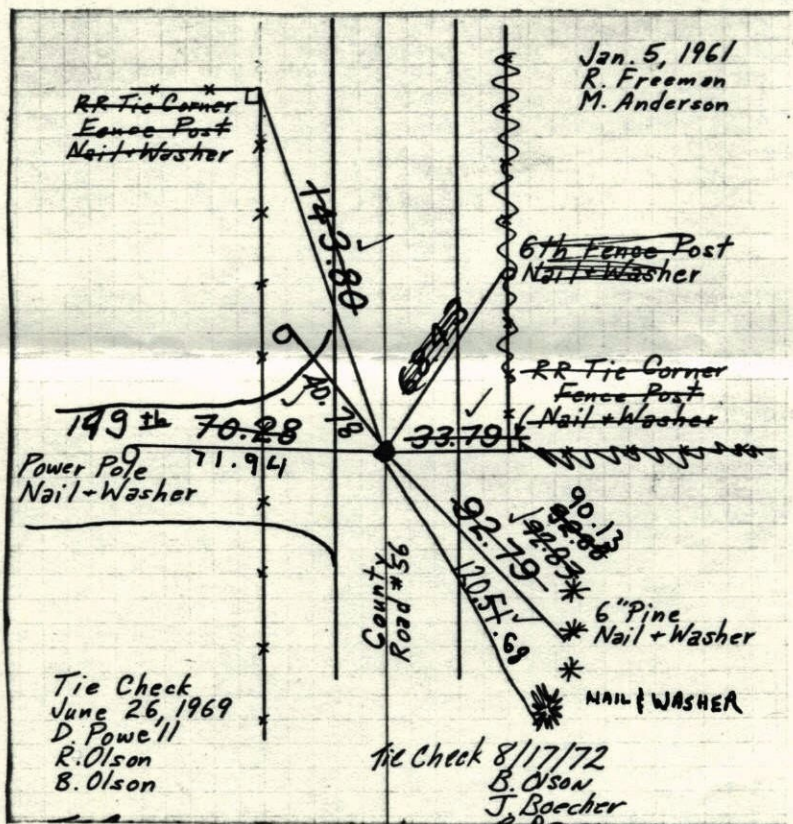
State of Minnesota

NORTHWEST Corner of Sec. 27 Township 32 Range 25

I hereby certify that on the 5 day of JANUARY, 1961, I found the described corner which was evidenced by 1/2" IRON PIPE

and I further certify that to perpetuate the location of said corner, I did, at the exact location thereof, place a permanent marker consisting of CAST IRON MONUMENT

which reference or witness monuments are located in the manner following:



Revised date
7-17-85

By
D. ROSS

Minnesota State Plane Coordinates
South Zone

Y _____ X _____

County Surveyor _____ Date _____

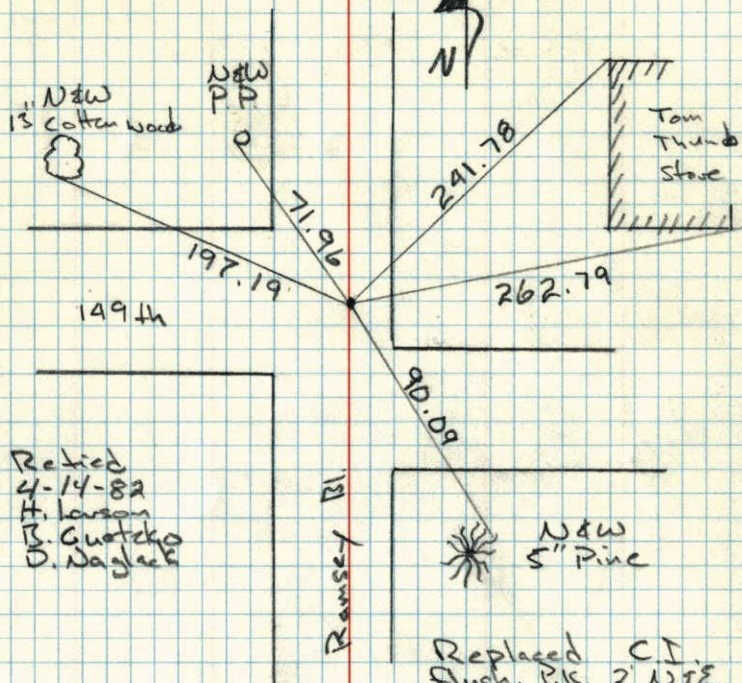
Registered Land Surveyor No. _____

N.W. Cor. Sec. 27 T.32 R.25

Replaced Iron Pipe with C.I. flush

1-5-61
R. Sorenson
M. Anderson

7-24-69

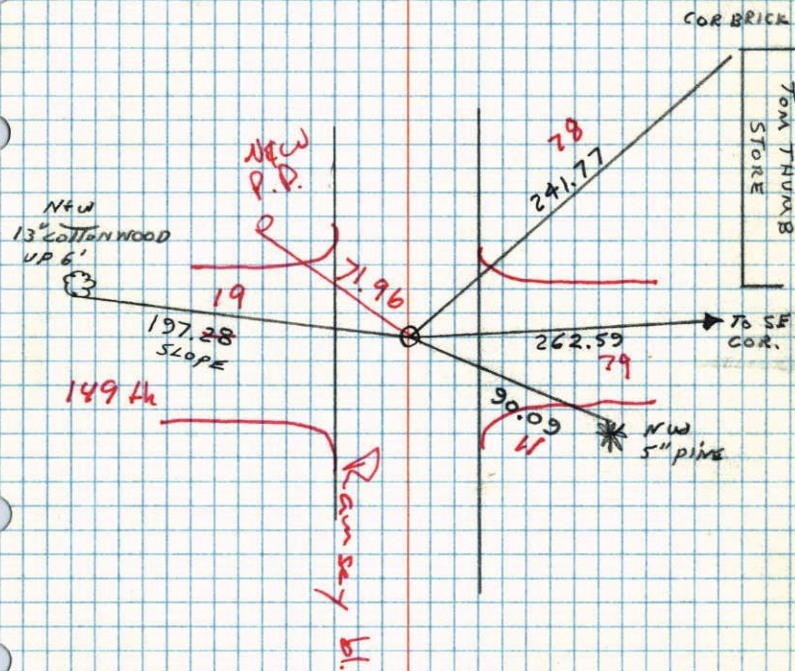
Retied
4-14-82
H. Larson
B. Guetzko
D. Naglak

Ramsey Bl.

Replaced C.I.
flush. Pk. 2' WTE7-20-82
P. Ross
P. Hornby
J. Beier

NW COR. SECTION 27 T32 R25

TIED FOR CONSTRUCTION

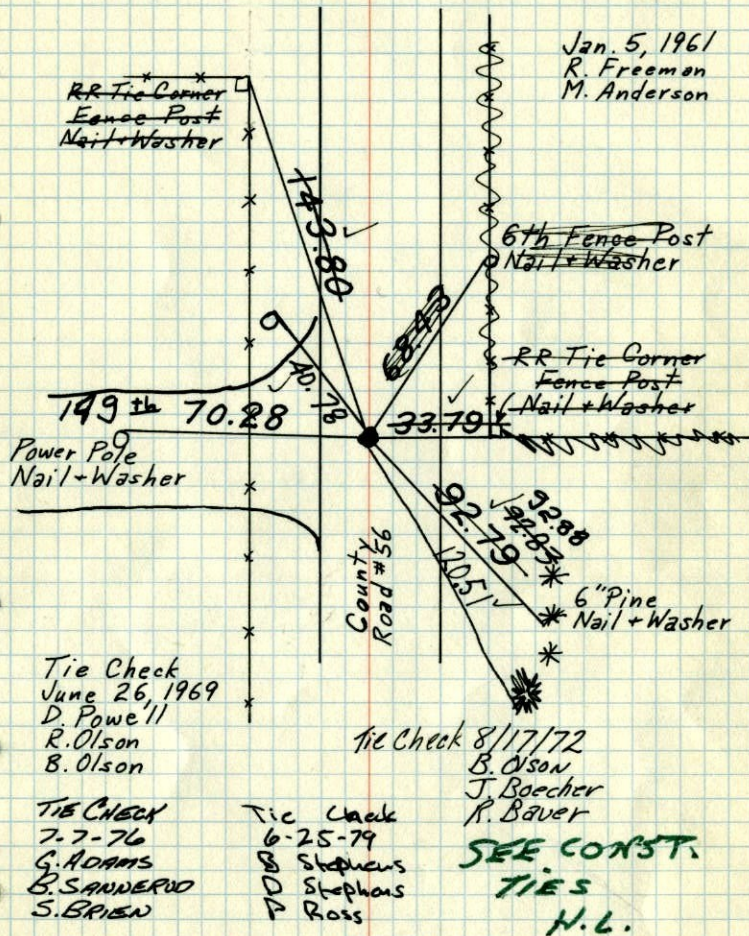
200' 52"
4-14-82
H. LARSON
B. GUETZKO
D. NAGLAK

NO. 448

TELEPHONE

NW Cor. Sec. 27-T32-R25

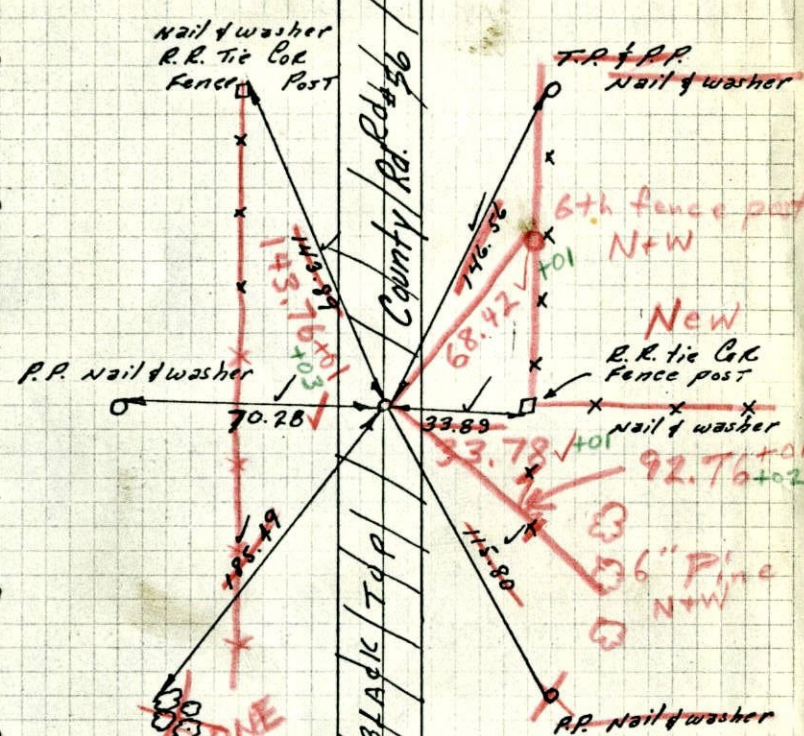
1/2" Iron Pipe 3'± West of Centerline down 0.1'±.
 Replaced Iron Pipe with Cast Iron Monument
 flush. 7/24/69



TEMPERATURE CORRECTED AND HORIZONTALLY TAPED MEASUREMENTS
 ROLAND W. ANDERSON
 COUNTY SURVEYOR
 ANOKA COUNTY, MINNESOTA

NW Cor. Sec. 27-32-25

Found 1/2" Iron in Blacktop Rd.
 down 0.1'±. 3'± West of E
 PK's 2.00' N + E



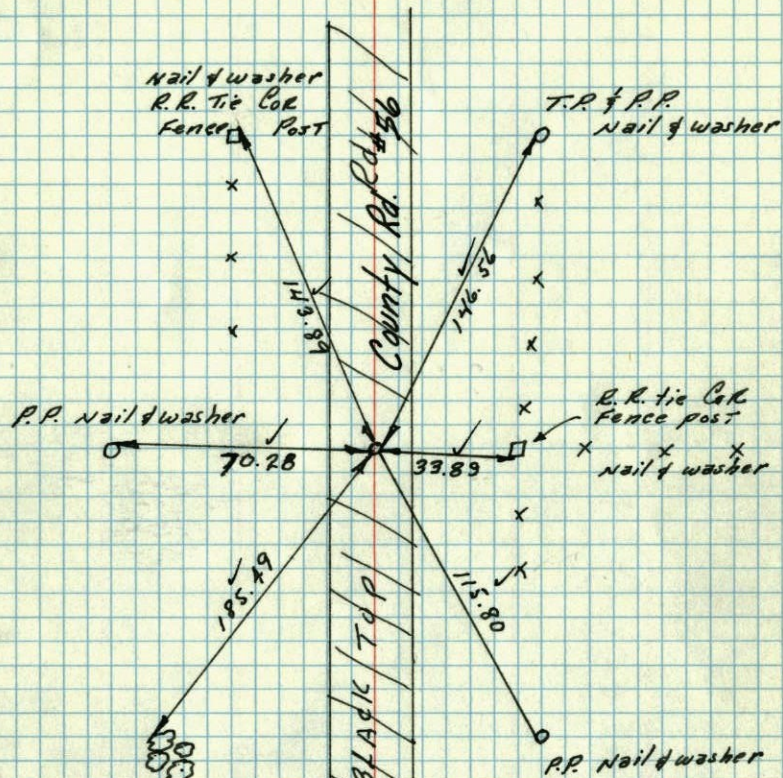
TEMPERATURE CORRECTED AND HORIZONTALLY TAPED MEASUREMENTS
 Retie 8/7/64
 M. D. Anderson
 R. Carlson

5 Jan 1961
 R. Freeman
 M. Anderson.
 ROLAND W. ANDERSON
 COUNTY SURVEYOR
 ANOKA COUNTY, MINNESOTA

6/26/69
 #4-790
 D. Powell
 R. Olson
 B. Olson

NW Cor. Sec. 27-32-25

Found 1/2" Iron in Blacktop Rd.



TEMPERATURE CORRECTED
AND HORIZONTALLY
TAPED MEASUREMENTS

Retie 8/7/64

M. D. Anderson
R. Carlson

5 Jan 1961

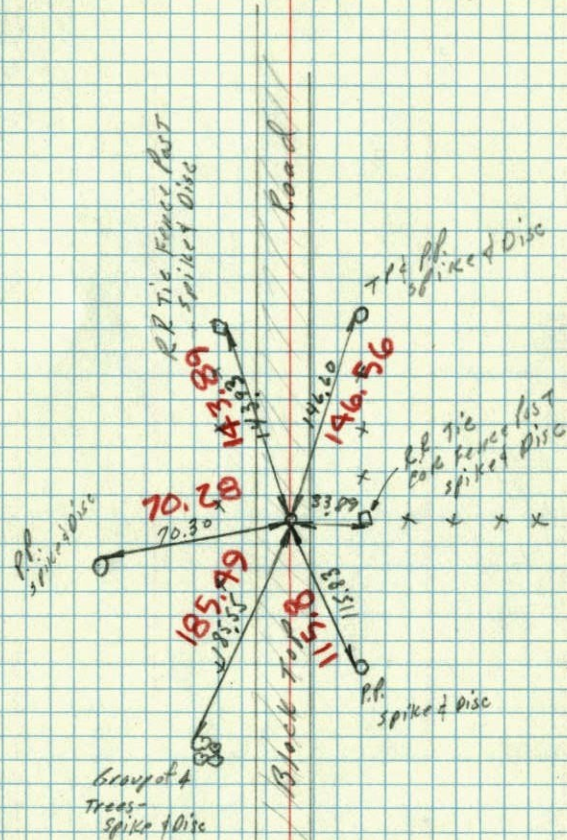
R. Freeman
M. Anderson.

ROLAND W. ANDERSON
COUNTY SURVEYOR
ANOKA COUNTY, MINNESOTA

5 Jan 1961
Freeman - Anderson
+ 30°

NW Cor. Sec. 27-32-25

Found 1/2" iron in Blacktop Road.



TEMP. CORR
for +30°